

Purcell Sub

OF

Las Tunas Tract.

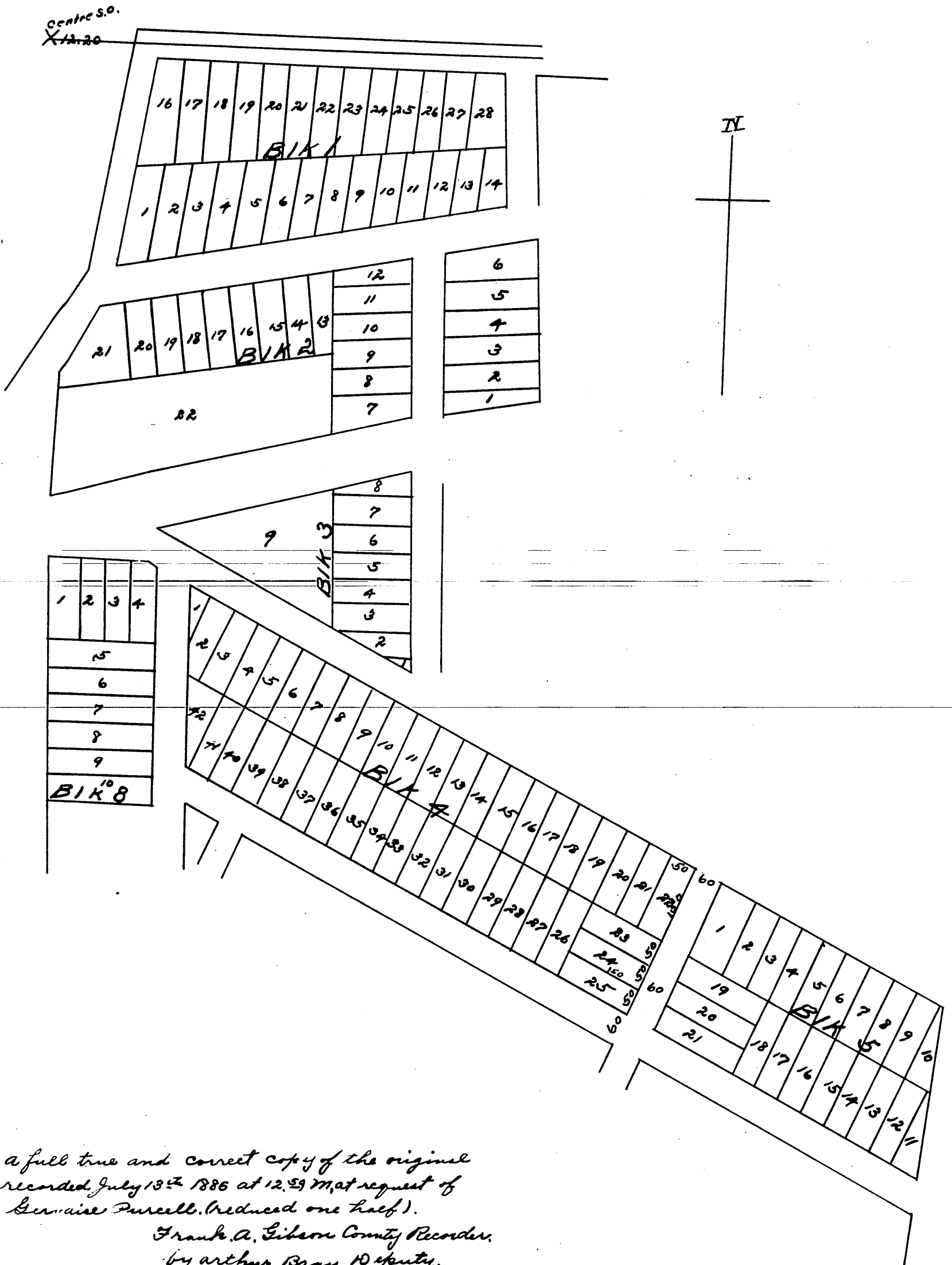
Situate in SE $\frac{1}{4}$ -S 11 T. 1. S. R. 12 W. S. B. M.

Scale 1 in = 100 feet.

MAP No 1.

Reduced one half.

MR 10-15



a full true and correct copy of the original
 recorded July 13th 1886 at 12.59 M, at request of
 Germaine Purcell. (reduced one half).

Frank A. Gibson County Recorder,
 by Arthur Bray, Deputy.