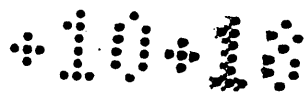
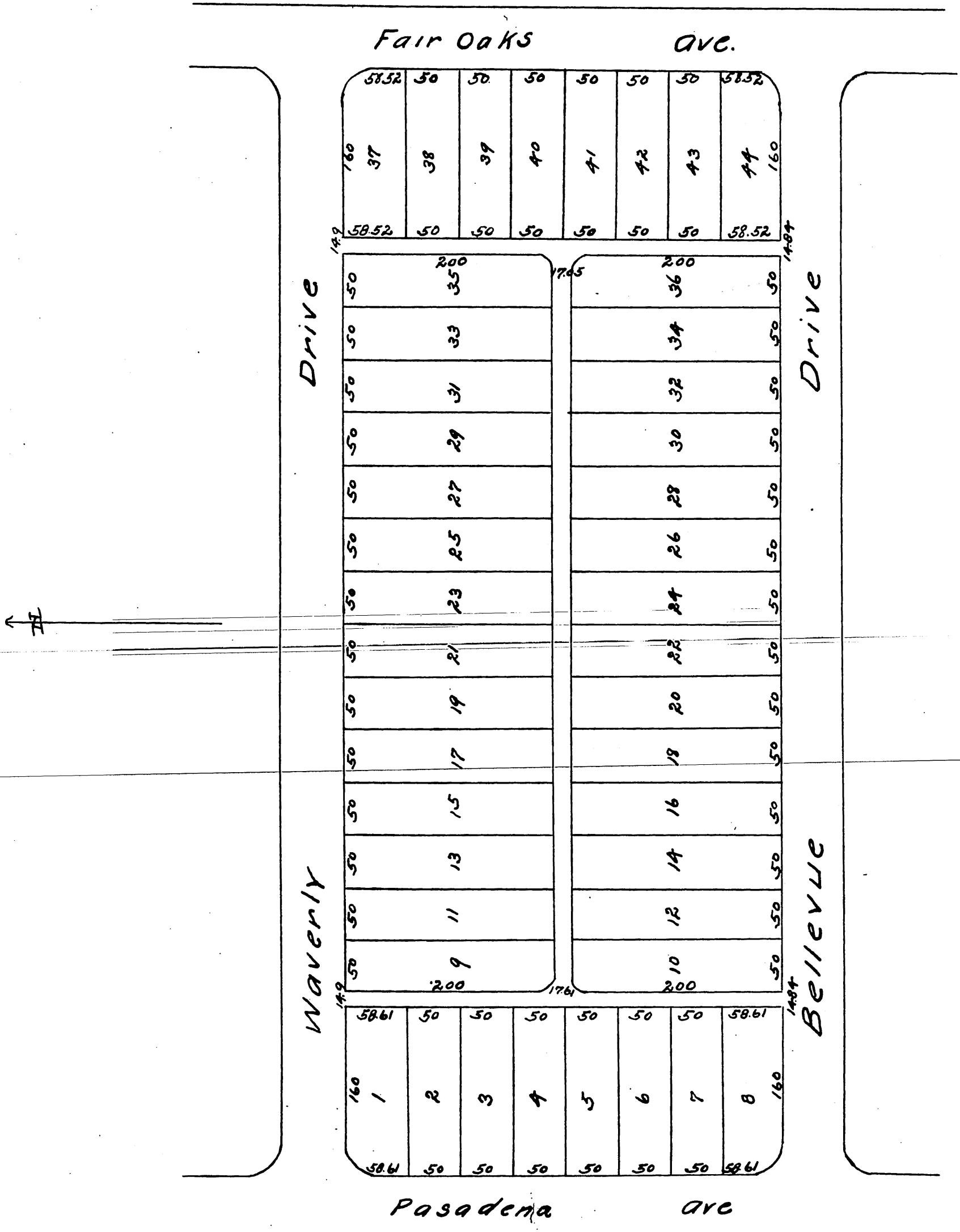


MR 10-18



Map
of
Legges Lower Tract.
a resubdivision of Lots 14 to 23
both inclusive of a portion of Division 'B' of the
James Smith Tract.
Pasadena. Los Angeles Co. Cal.
Surveyed July 1886 By J. M. Willard C.E.
Scale 100ft to one inch.



a full true and correct copy of the
original recorded July 15th 1886 at 3:19 P.M.
at request of Charles Legge.
Frank A. Gibson County Recorder
by Arthur Bray Deputy.