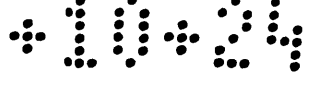
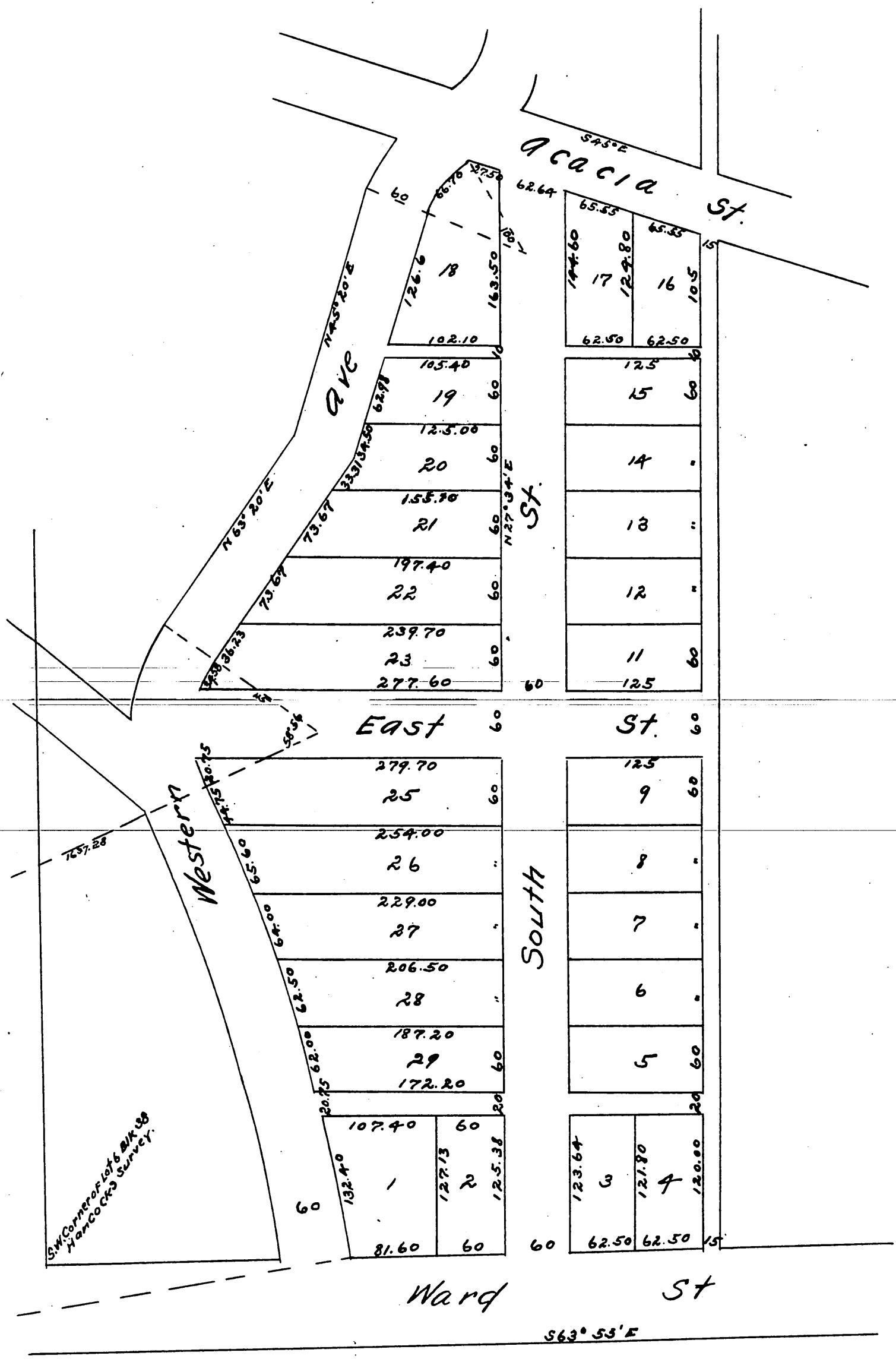


MR 10-24



Map  
of  
J.W. Ellis' Subdivision  
of part of  
Lot 6 Block 38 Hancock's Survey.  
Surveyed June 29<sup>th</sup> and July 1<sup>st</sup> 1886 by W.F. McClure C.E.  
Scale 1 inch = 100 feet.



a full true and correct copy of the original  
recorded 17<sup>th</sup> July 1886 at 11<sup>15</sup> A.M. at request  
of P Beaudry.  
Frank A. Gibson County Recorder.  
by N.S. Averill Deputy.