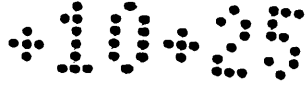


MR 10-25

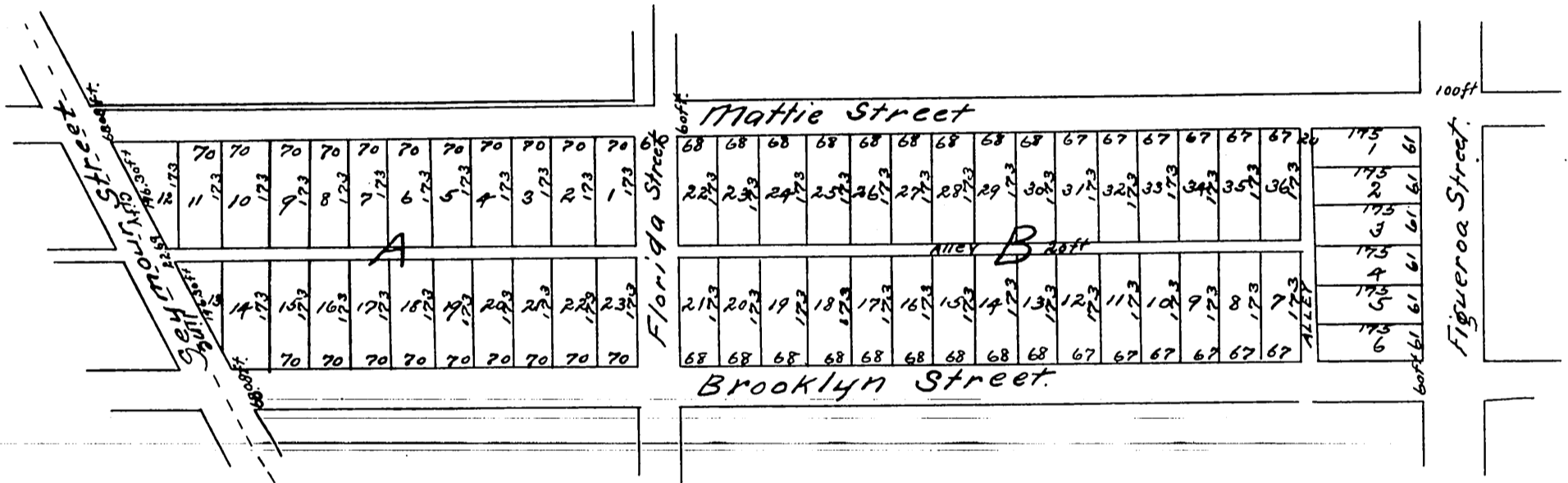


Wheeler Tract

Los Angeles California.

Surveyed by Albert G. Ruxton.

Febr'y 1884.



A full true and correct copy of the original
 recorded July 20th 1886 at 12:49 PM, at request of
 J.O. Wheeler.
 Frank A. Gibson County Recorder
 by N.S. Averill. Deputy.