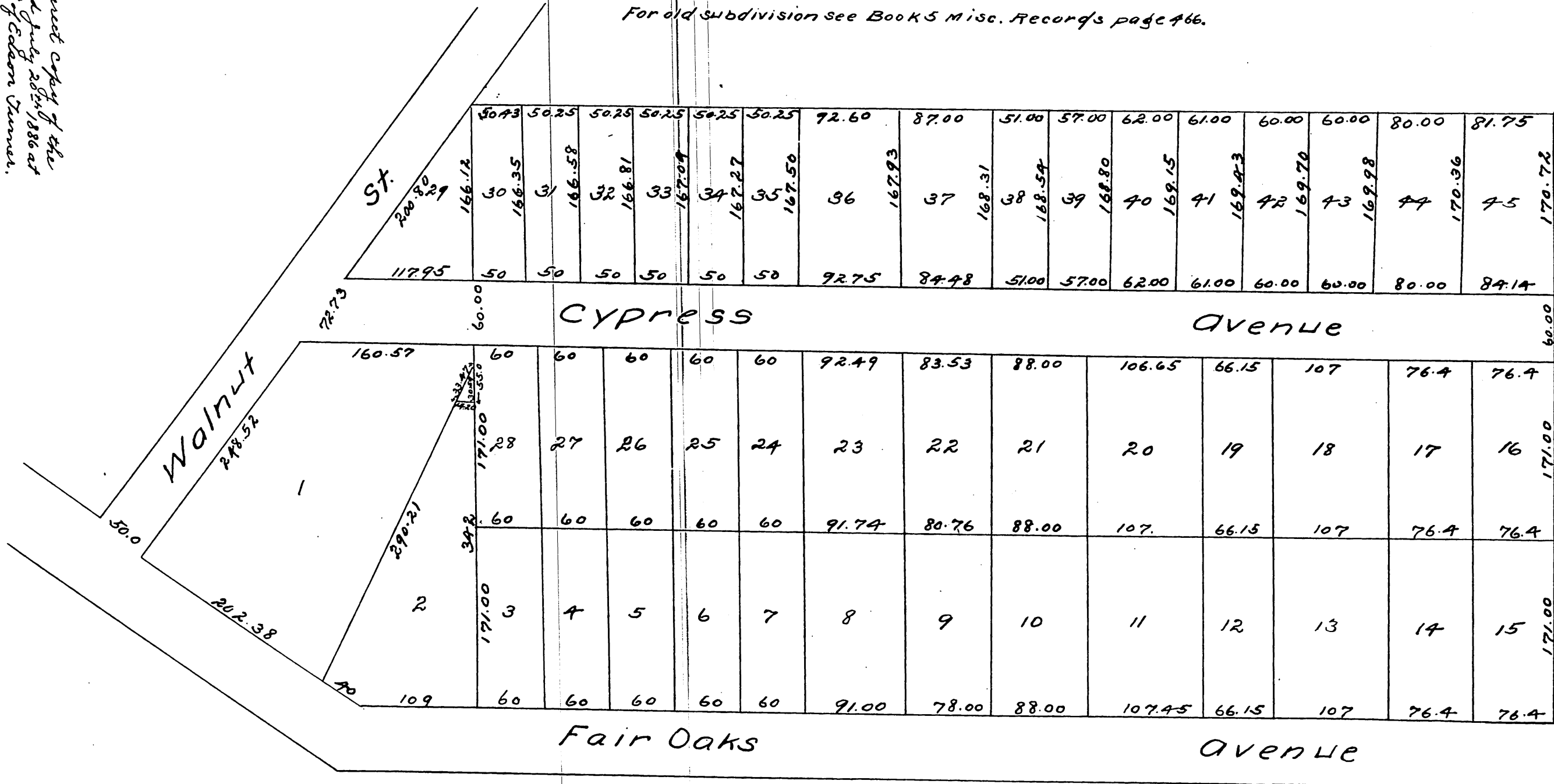


MAP
 of the resubdivision of the
Turner Tract.
 Subdivision of a part of Division "B"
 San Gabriel Orange Grove Association.
 Rancho San Pasqual.
 Pasadena Cal.
 Surveyed May 1886 by J. M. Willard
 Scale 100 ft = 1 inch.
 For old subdivision see Book 5 Misc. Records page 466.

A file true and correct copy of the
 original, recorded July 20th 1886 at
 1:45 PM at request of Edison Turner.
 Frank D. Gibson County Recorder.
 by Arthur Bray Deputy.



MR 10-26