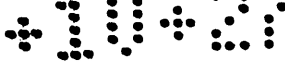


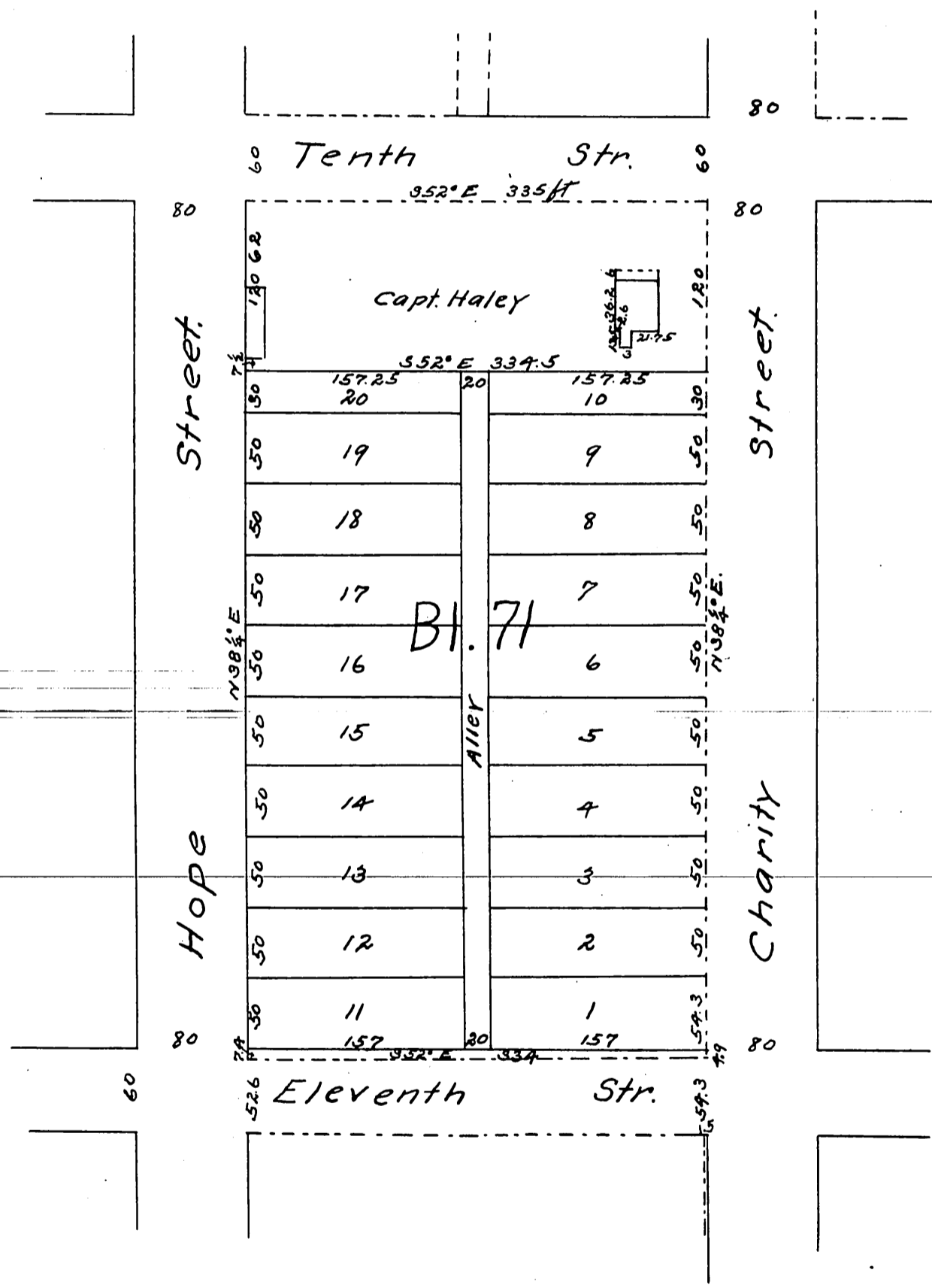
MR 10-27



Subdivision  
of  
**Block 71 Ord Survey**  
in Los Angeles City, State of Cala.

Surveyed at request of I. W. Hellman.  
June 23-1884 by Hansen and Solano  
True courses- Variation  $14\frac{1}{2}$  East.  
Scale of one inch to sixty feet.

(Reduced to scale of 100 feet to one inch to accommodate size of this Book - Recorder)



a full true and correct copy of the original  
(reduced from a scale of 60 ft to one inch to  
a scale of 100 ft to one inch.) Recorded July 22<sup>nd</sup>  
1886 at 9.36 A.M. at request of I. W. Hellman.

Frank A. Gibson County Recorder  
by Arthur Bray Deputy.