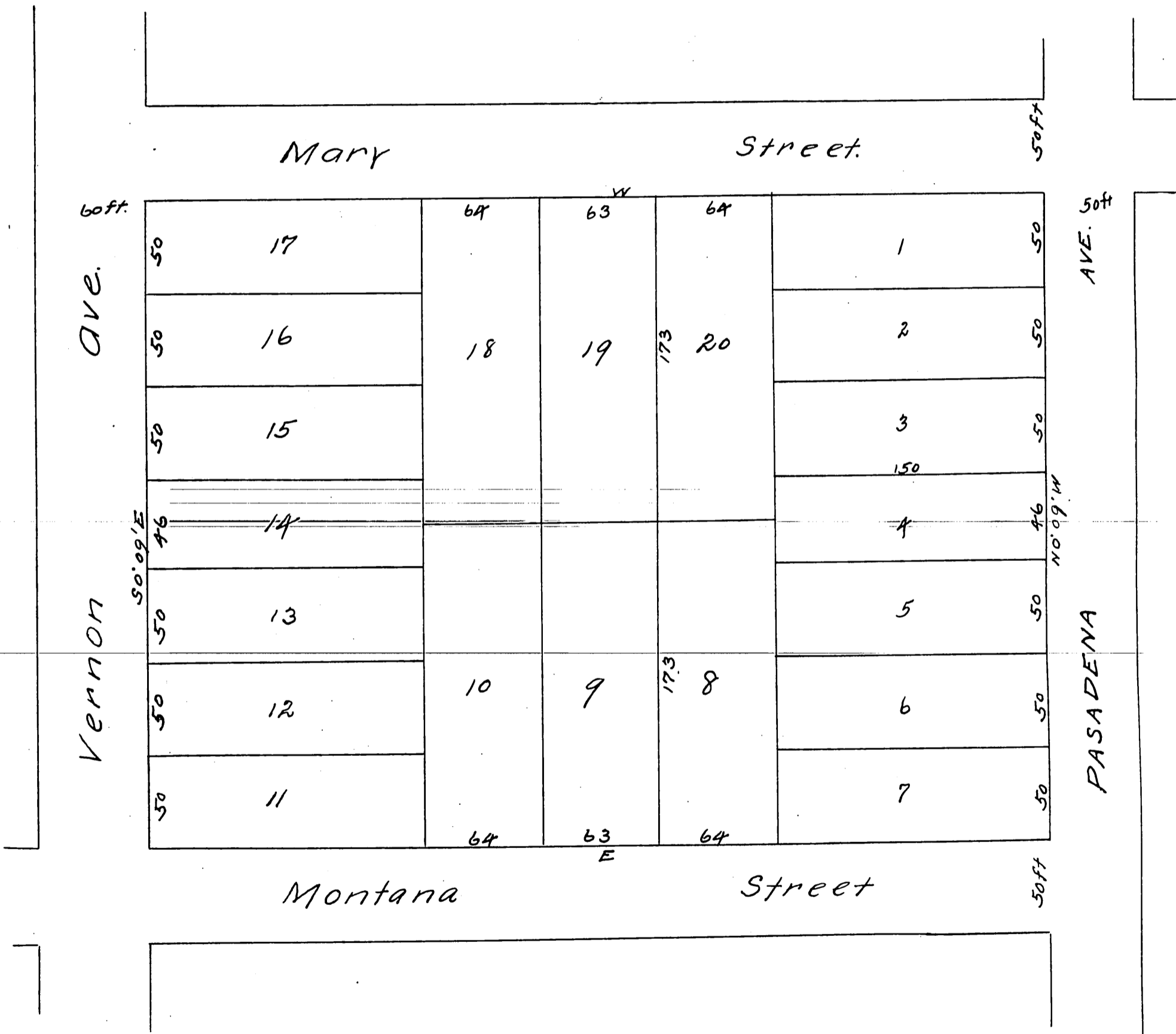


Map
of
S.H. Doolittle's Subdivision
of Lot 21 of B.F. Balls Subdivision
of Pasadena Cal.

as Recorded in Book 9 Page 51. Miscell's
Records of Los Angeles Co.

Surveyed by Williell Thompson July 1885
50ft = 1 in.

(Reduced to a scale of 60 feet to one inch to
accommodate size of this Book. - Recorder)



a full true and correct copy of the original.
(Reduced from a scale of 50ft to one inch to
a scale of 60ft to one inch) Recorded July 22nd
1886 at 11:20 A.M. at request of Samuel H. Doolittle.
Frank A. Gibson County Recorder
by Arthur Bray Deputy.