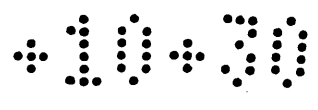


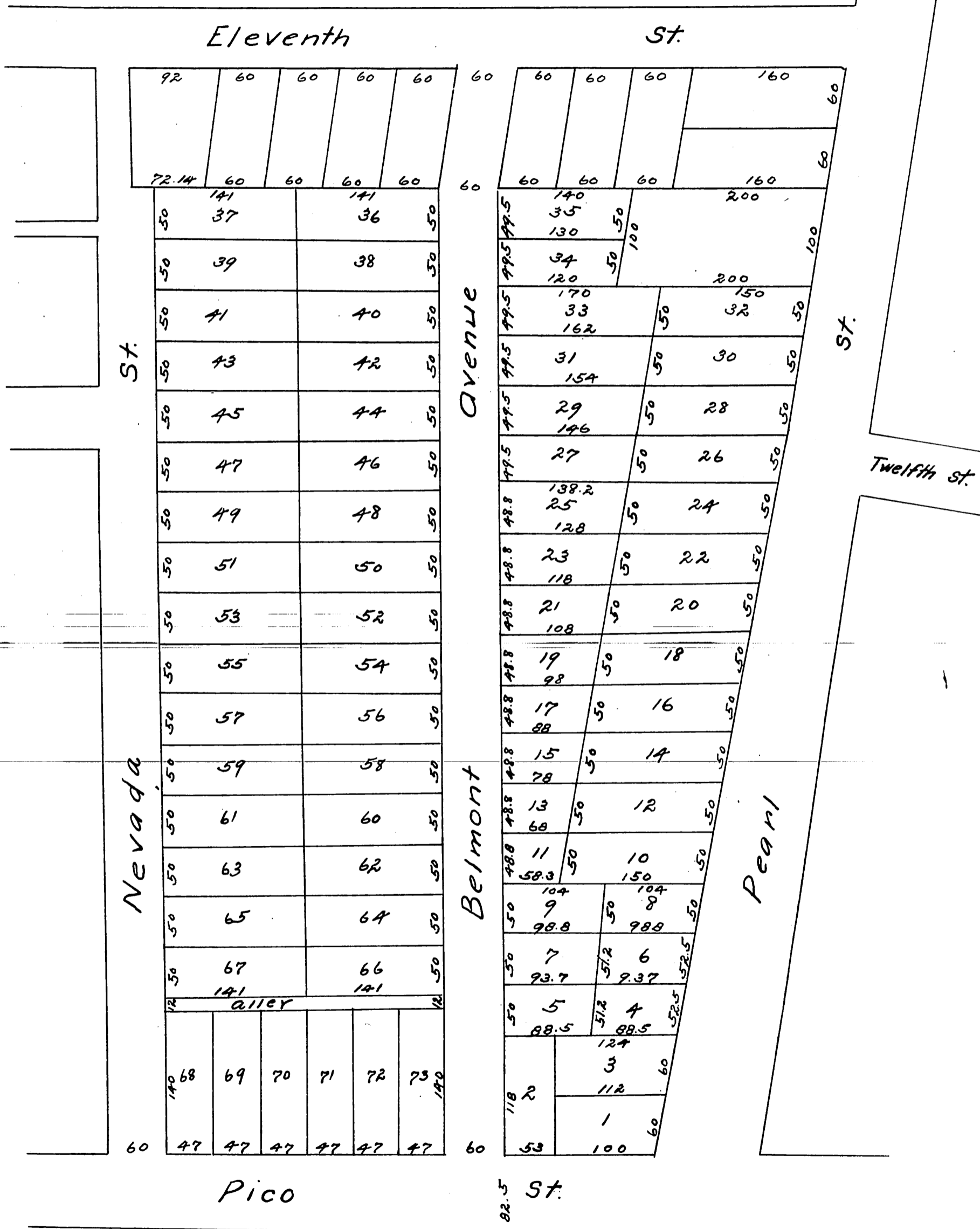
MC 10-30



Map of Kincaid's Tract. Los Angeles Cal

Surveyed at request of E.H. Kincaid Esq
by G. De Laveaux July 1886.

Scale 100 feet one inch.



A full true and correct copy of the
original recorded July 24th 1886
12:2 P.M. at request of E.H. Kincaid.
Frank A. Gibson County Recorder
by Arthur Bray Deputy.