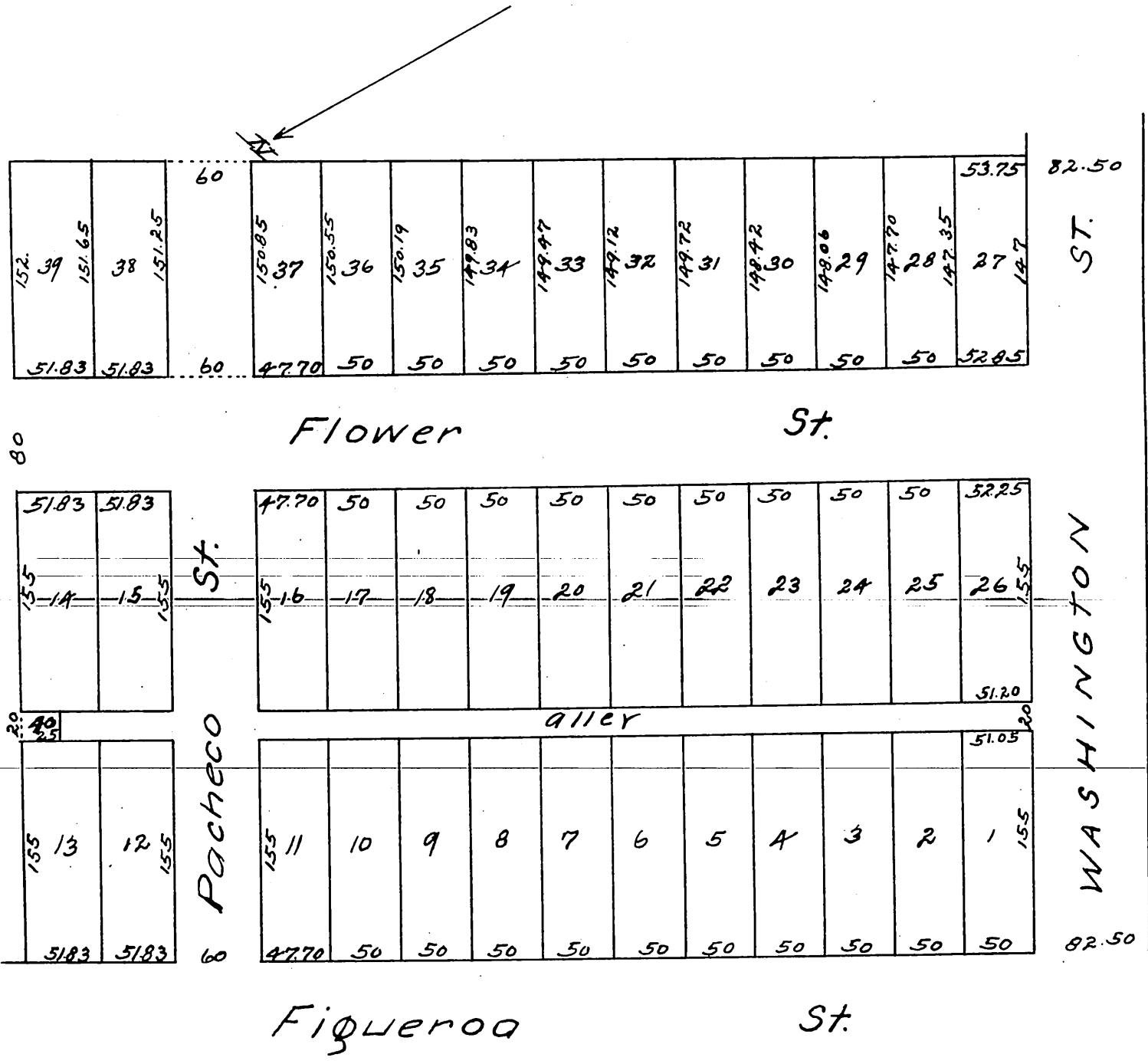




MR 10-32

Plat  
of the  
Wright Tract  
surveyed and subdivided  
by Frank D. Lanterman  
July 1886.

(Reduced to a scale of 100 feet to one inch  
to accommodate size of this book - recorder)



a full true and correct copy of the original  
(reduced from a scale of 50ft. to one inch to  
a scale of 100ft. to one inch) Recorded July 26<sup>th</sup>  
1886 at 9:58 P.M. at request of W<sup>o</sup> Wright.  
Frank. A. Gibson County Recorder  
by Arthur Bray DEPUTY.