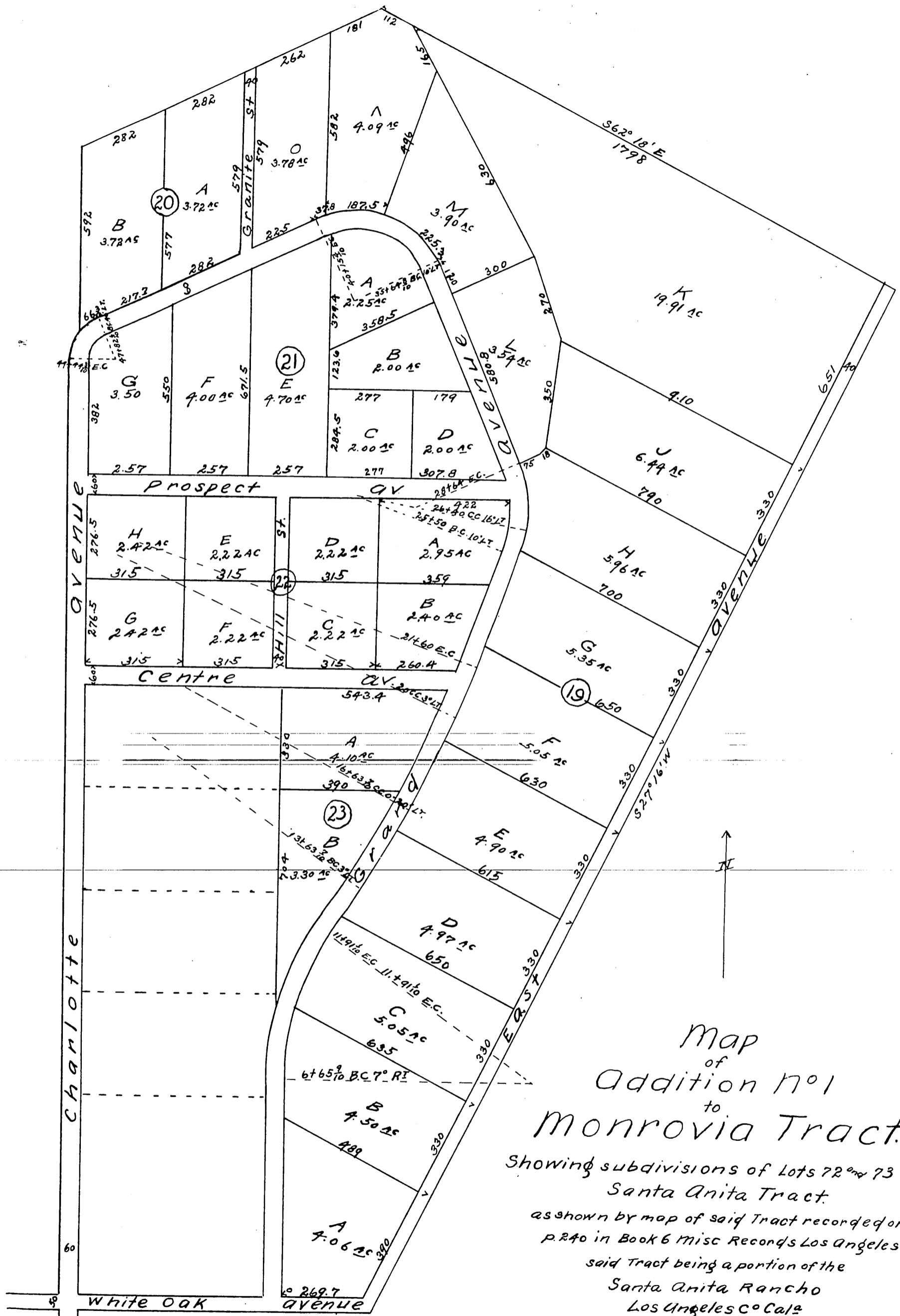
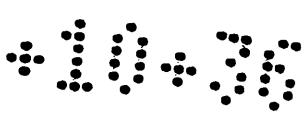


MR 10-36



Map  
of  
Addition No 1  
to  
Monrovia Tract.

Showing subdivisions of Lots 72 and 73 of  
Santa Anita Tract.  
as shown by map of said Tract recorded on  
P. 240 in Book 6 Misc Records Los Angeles Cal  
said Tract being a portion of the  
Santa Anita Rancho  
Los Angeles Co Cal

Surveyed by Flanagan and Quinton July 1886  
Scale 200ft to 1 inch.

Reduced to a scale of 300 feet to one inch to  
accommodate size of this book - Recorder.

a full true and correct copy of the original.  
(Reduced from a scale of 200ft to one inch  
to a scale of 300ft to one inch) Recorded July  
28th 1886 at 4.47 P.M. at request of J. D. Bicknell,  
Frank A. Gibson County Recorder.  
By Arthur Bray Deputy.