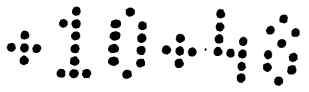


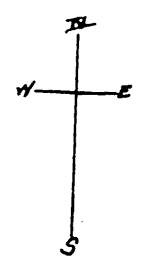
MC 10-48



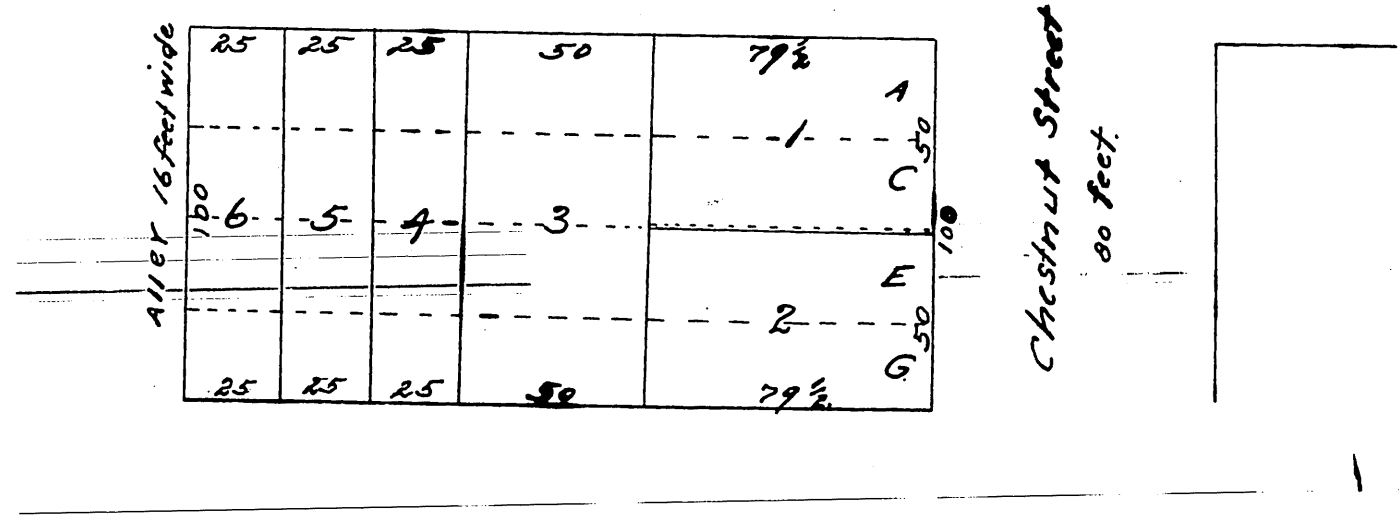
# Plat of A. J. Beecher's Subdivision

Lots A, C, E & G of Block 108 of the Town of Long Beach.  
Los Angeles Co Cal.  
made Aug 3 1886 by C. B. Sheldon Surveyor  
Scale 50 feet to the inch.

Original Lots indicated by dotted lines.  
Size of lots given in feet.



Second Street 80 feet.



A full true and correct copy of the original recorded  
August 5th 1886 at 2:2 P.M. at request of Anna J. Beecher.  
Frank A. Gibson County Recorder.  
By N. S. Averill Deputy.