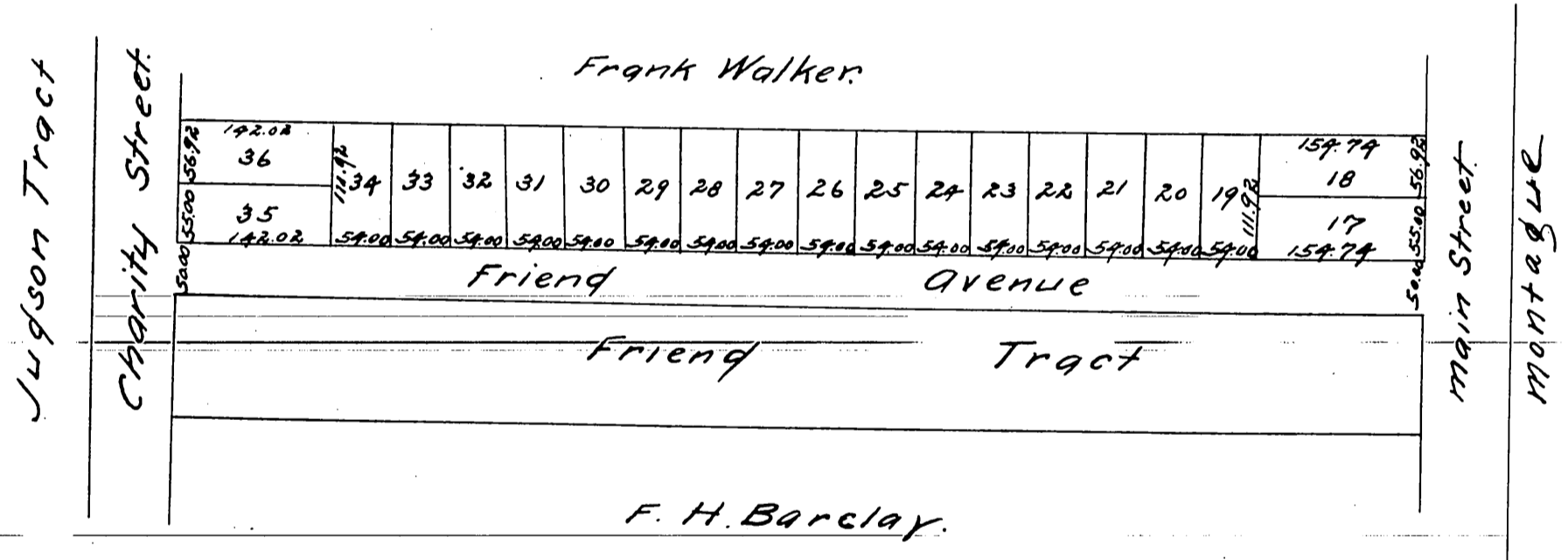


PLAT  
of  
Snyder and Wade's Subdivision  
of the  
North half of the Friend Tract  
in the  
City of Los Angeles.

Scale 150 ft to one inch.



a full true and correct copy of the original recorded.  
August 6<sup>th</sup> 1886 at 11:51 A.M. at request of Snyder & Wade.  
Frank A. Gibson County Recorder.  
By Arthur Bray. Deputy.