

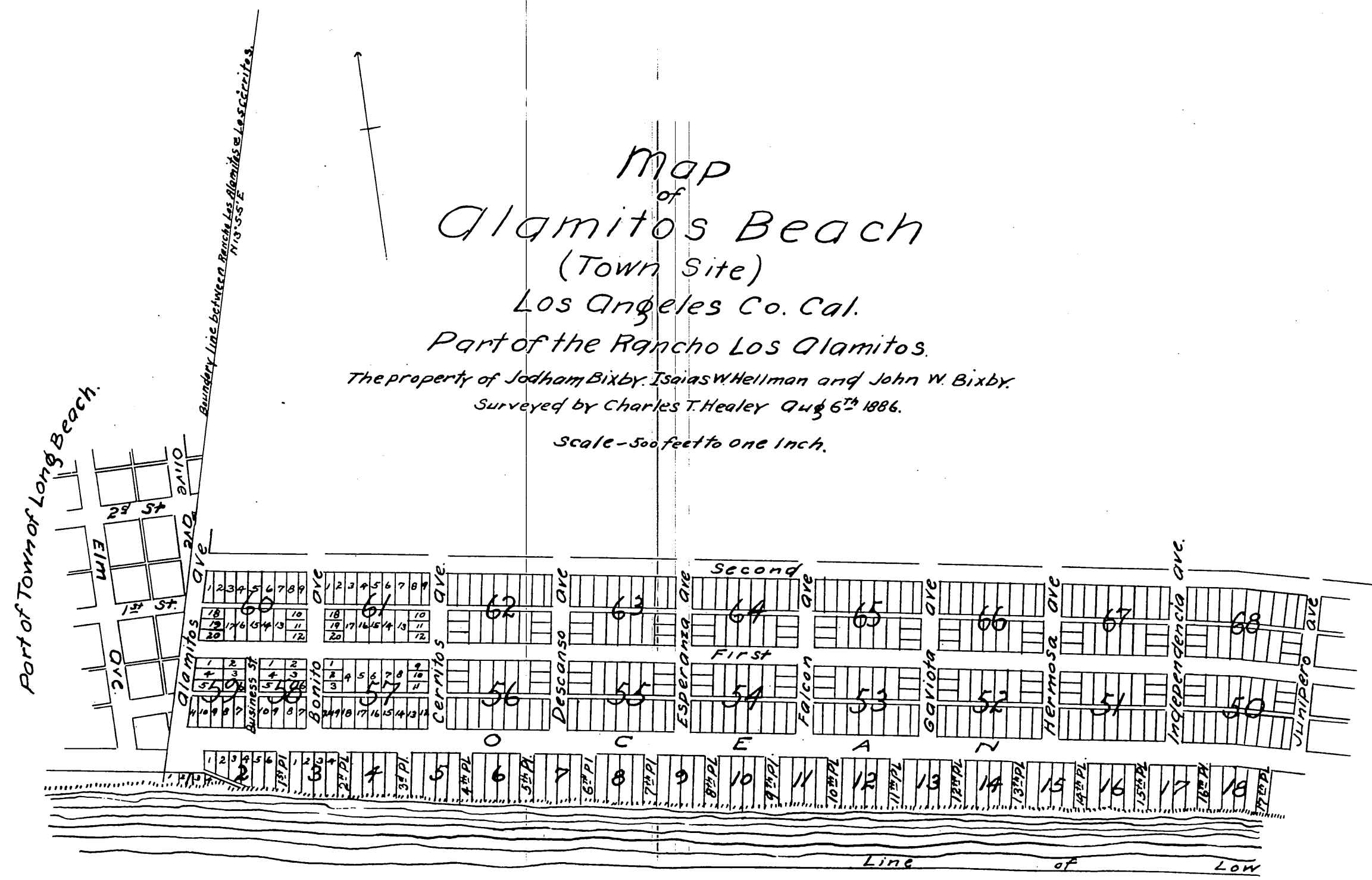
Map of Alamitos Beach (Town Site)

Los Angeles Co. Cal.

Part of the Rancho Los Alamitos.

The property of Jodham Bixby, Isaias W. Hellman and John W. Bixby.
Surveyed by Charles T. Healey Aug 6th 1886.

Scale - 500 feet to one Inch.



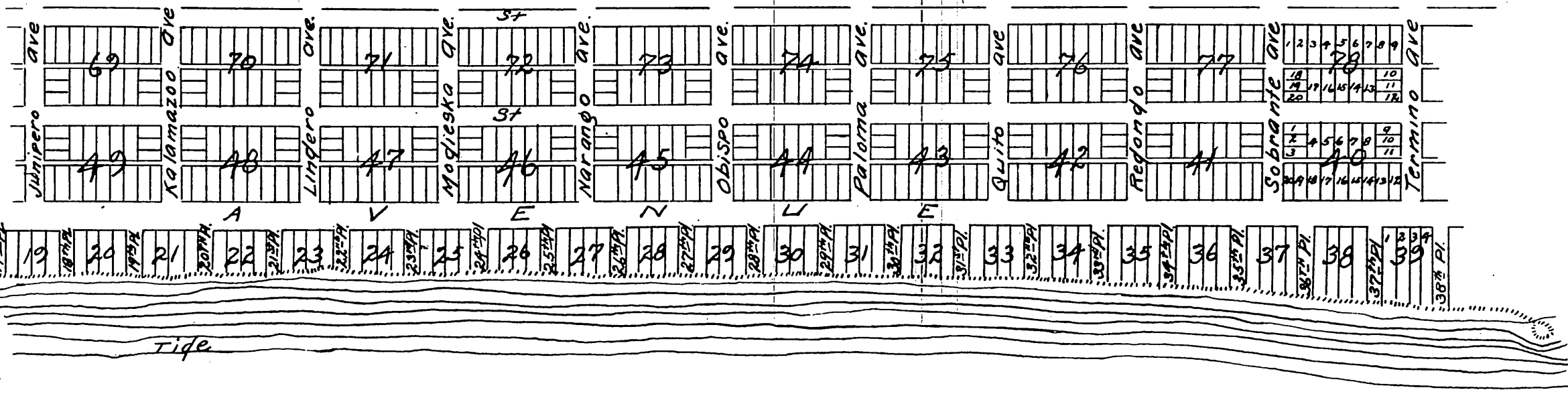
P A C I F I C

The South side of Ocean Avenue is the Base Line Course from angle in centre of Block 18, N 81° 06' W. and S 76° E.
 All Lots and Places South of Base, are 55 feet wide, and at right angles thereto, Ocean Avenue is 100 feet wide.
 All Avenues North of Base are 75 feet wide, and at right angles thereto except Alamos Avenue.
 First and Second Streets are 75 feet wide.
 All Corner Lots running North and South on the Avenues north of Base are 45 feet by 150 feet. All other Lots running north and South (except fractional Lots in Blocks 50-59-60-68) are 55 feet by 150 feet. All Lots running East and West are 50 feet by 100 feet. Business Street is 55 feet wide. All alleys are 20 feet wide.
 Center of each Avenue is opposite centre of Block South of Base, except Alamos Avenue.

I hereby certify that the included angle between the W. line of the Rancho Los Alamos, as finally adopted, and the Base of Surveyers of Alamos Beach town site, is 84° 35'

Charles T. Healey,
 Surveyor.

August 7th 1886.



It is hereby certified that all lots South of ocean avenue, in the Alamos Beach town site, except fractional lots in Block 2, extend southerly to the South boundary of the Rancho Los Alamos, described in the U. S. Patent thereof, as the shore of the Pacific Ocean.

Charles T. Healey,
 Surveyor of said Town

Aug 14 1886

A full true and correct copy of the original recorded Aug 6th 1886 at 3.29 P.M. at request of J.W. Hellman.
 Frank A. Libern County Recorder.
 By Arthur Bray Deputy.