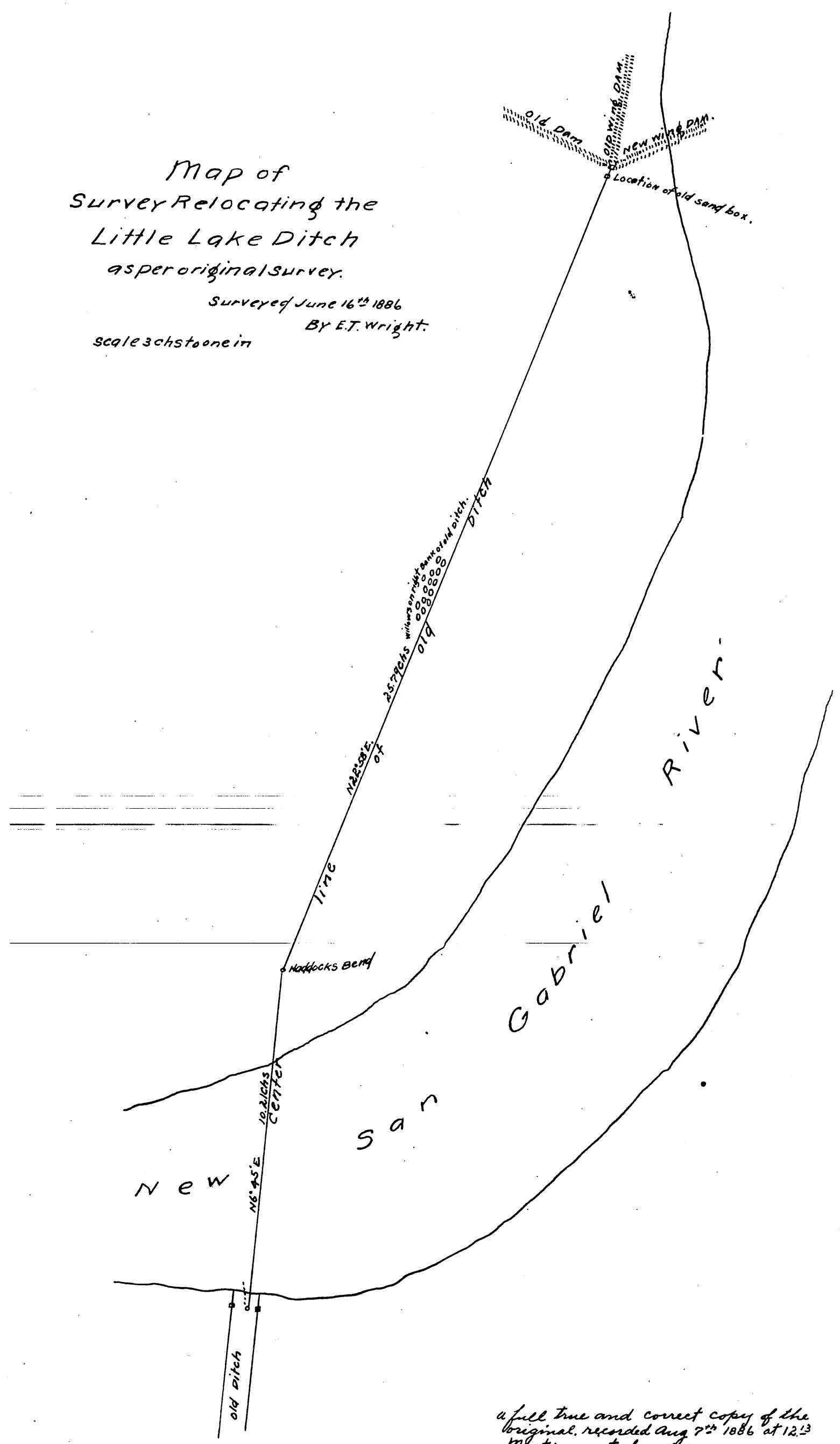


MR 10-53



Map of  
Survey Relocating the  
Little Lake Ditch  
as per original survey.

Surveyed June 16<sup>th</sup> 1886  
By E.T. Wright.  
Scale 3 ch stone in



a full true and correct copy of the  
original, recorded Aug 7<sup>th</sup> 1886 at 12:13  
M. at request of W.W. Orr.  
Frank A. Libson County Recorder.  
By Arthur Bray Deputy