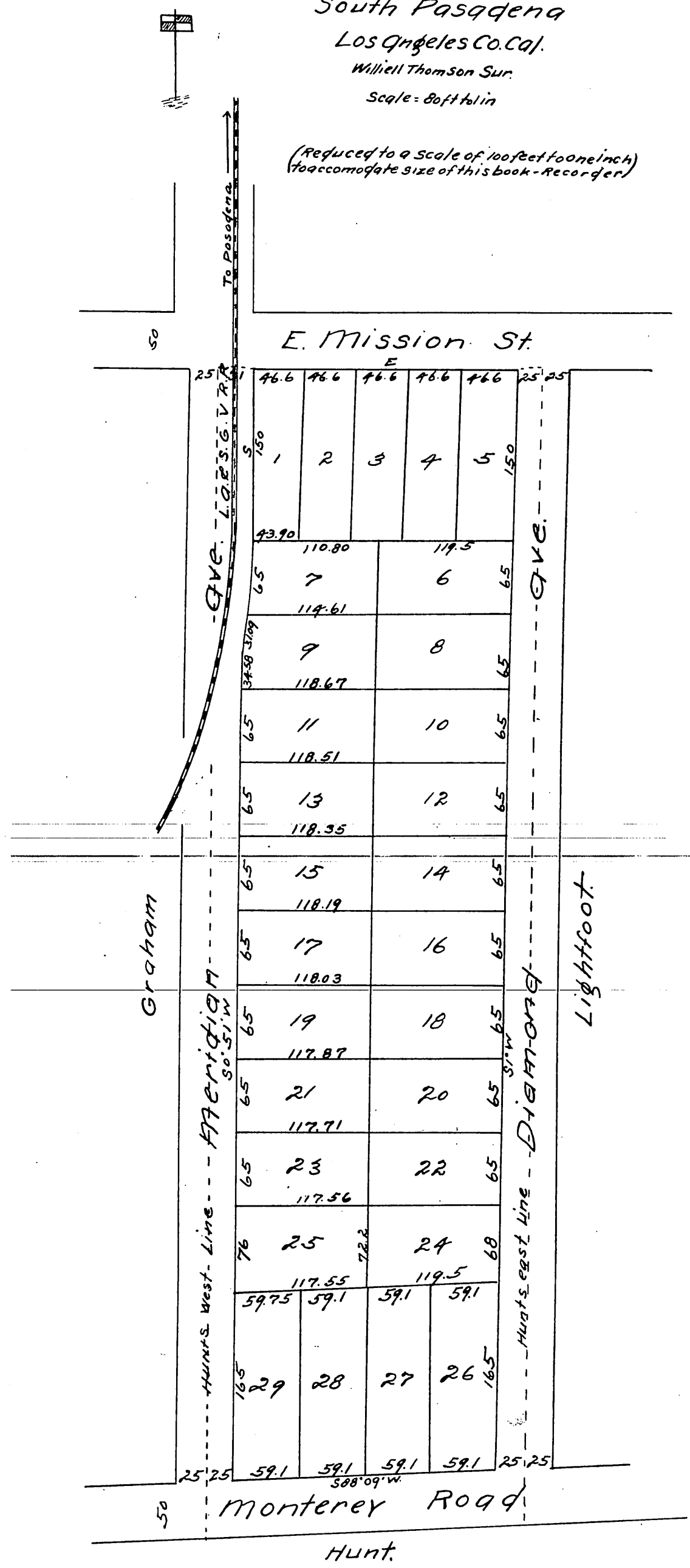


MR - 10-55

1055

Plat of
 S. B. Hunt's Addition
 to the Town of
 South Pasadena
 Los Angeles Co. Cal.
 Williel Thomson Sur.
 Scale = 80 ft to in

(Reduced to a scale of 100 feet to one inch
 to accommodate size of this book - Recorder)



a full true and correct copy of the original
 (reduced from a scale from 80 feet to one inch
 to a scale of 100 feet to one inch). Recorded August
 11th 1886 at 3.45 P.M. at request of S. B. Hunt.

Frank A. Gibson County Recorder,
 By Arthur Bray Deputy.