



Plat of the Olive Hill Tract.

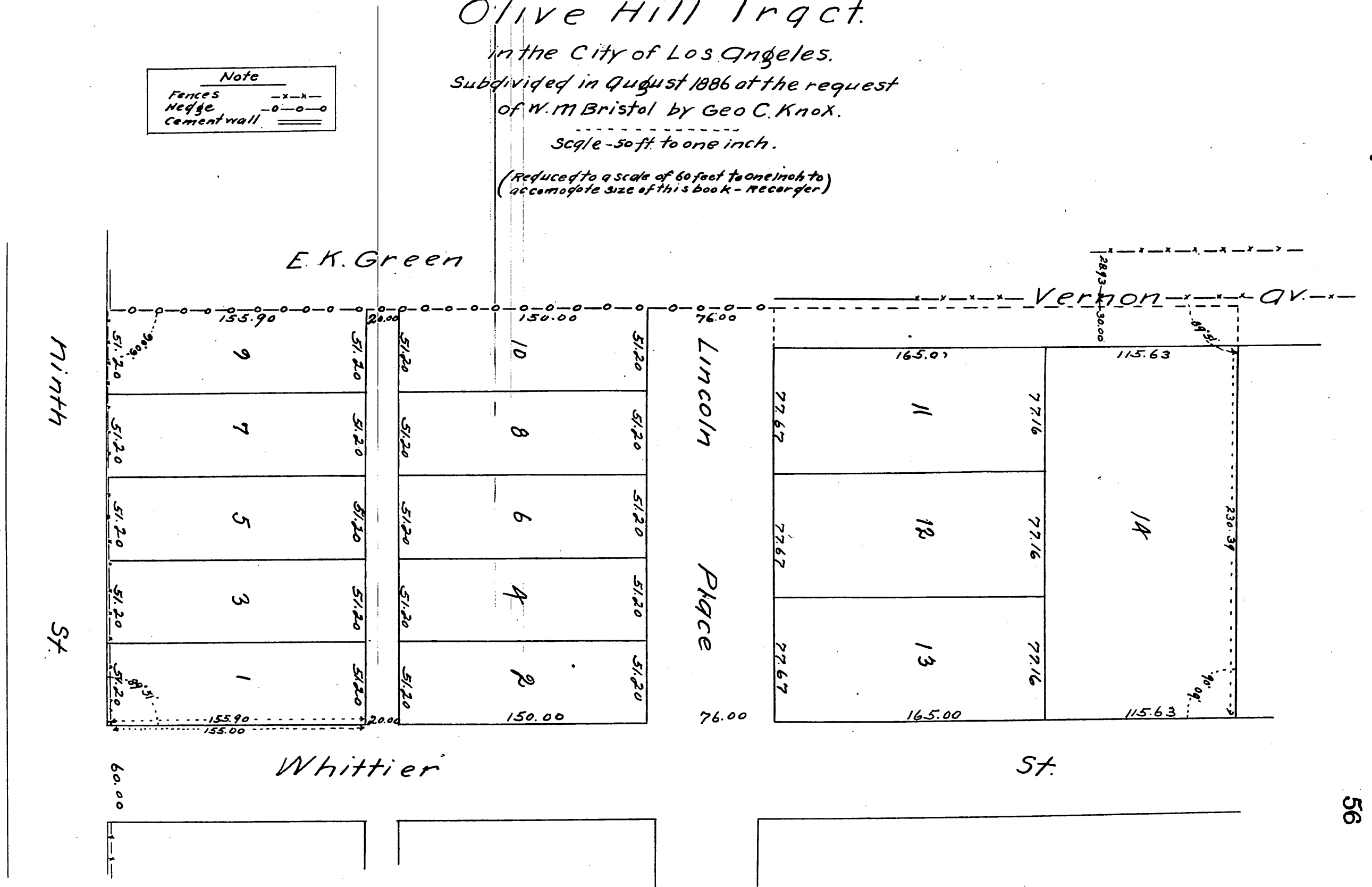
in the City of Los Angeles.

Subdivided in August 1886 at the request
of W. M. Bristol by Geo C. Knox.

Scale - 50 ft. to one inch.

(Reduced to a scale of 60 feet to one inch to
accommodate size of this book - Recorder)

Note	
Fences	-x-x-
Hedge	-o-o-o-
Cement wall	====



A full true and correct copy of the original
 (Reduced from a scale of 50 feet to one inch to
 a scale of 60 feet to one inch) recorded Aug 11th
 1886 at 4th St B.M. at request of W. M. Bristol
 Frank C. Liborn County Recorder.
 By Arthur Gray Deputy.