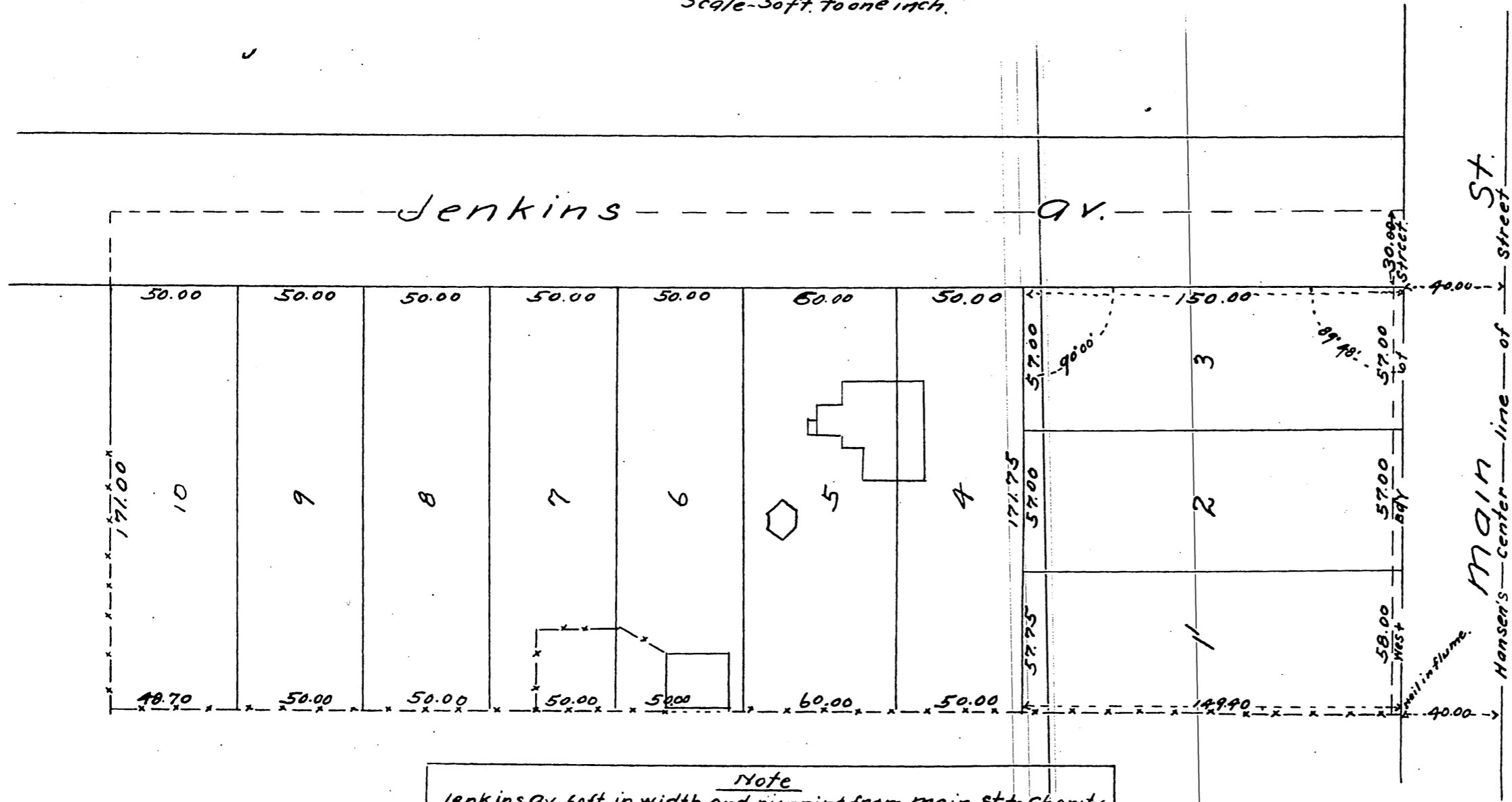


Plat of the
 Jenkins Tract
 in the City of Los Angeles.
 subdivided at the request of Chas M. Jenkins Esq.
 in Feb. 1886, by Geo. C. Knox, C.E.

Scale - 50ft. to one inch.



Note
 Jenkins Av. 60ft. in width and running from main St to Charity.
 St has been deeded to City by C. M. Jenkins and J. H. Hege.
 The S.E. corner of the Jenkins Tract is 528.54ft. northerly,
 along the West side of main St. from the N.W. corner of
 main and Adams St.

a full true and correct copy of the
 original recorded Aug 12th 1886
 at 10:20 A.M. at request of Geo. D. Rowan.
 Frank A. Tibbott County Recorder
 By Arthur Bray Deputy

1057

MR 10-57