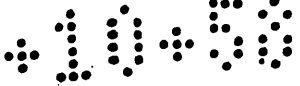


HR-10-58



Map of the
 Los Angeles Improvement Co's
 Subdivision of part of Lot 7 Block 39 Hancock's Survey
 being amendatory to Block K and part of Block L
 as per map recorded in Book 6 page 138

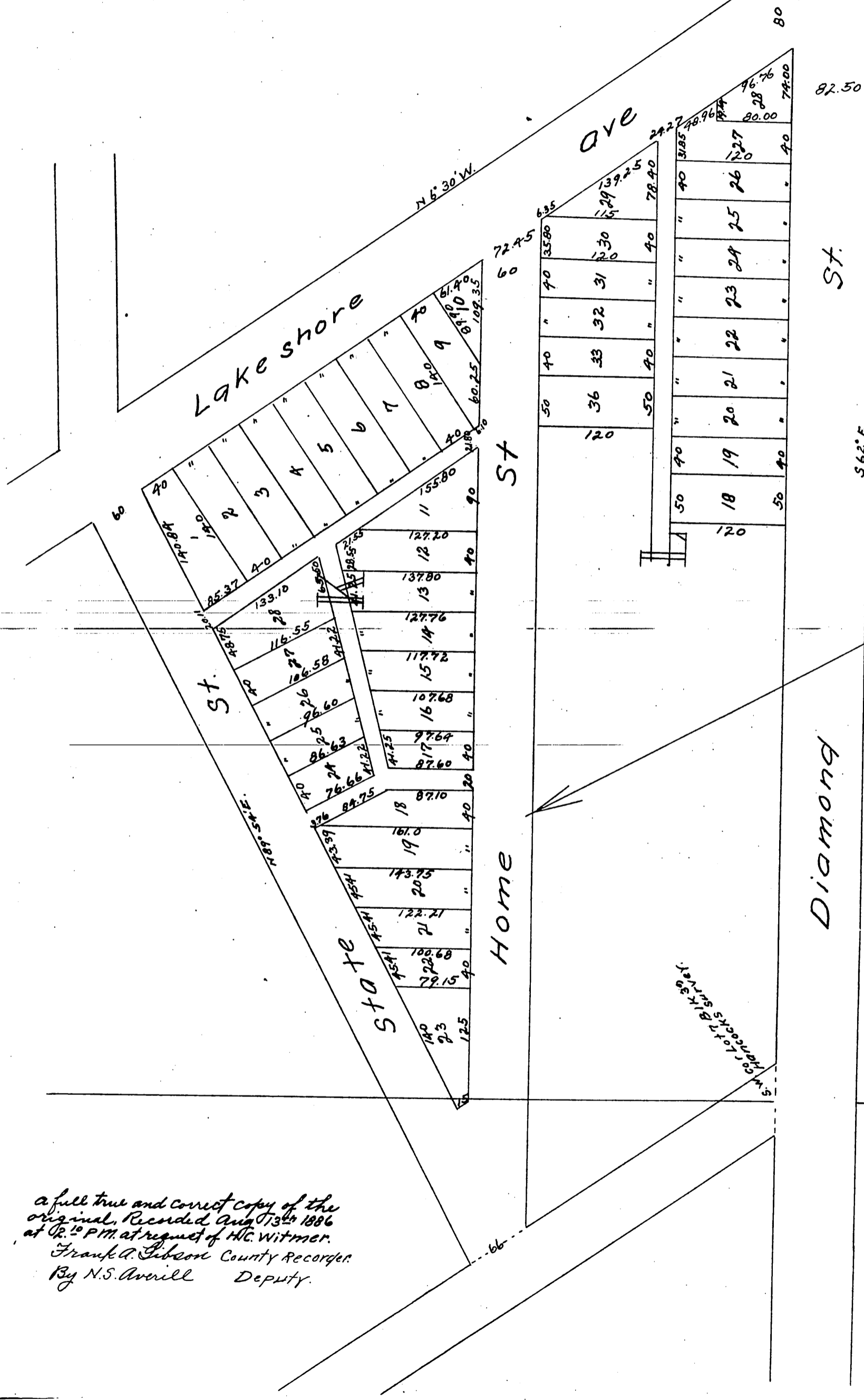
S.E. Corner of Lot 7 Block 39
Hancock's Survey

Miscellaneous Records of Los Angeles County

Surveyed July 1886 by W.F. McClure.

Scale 1 inch = 100 ft.

58



a full true and correct copy of the
 original, Recorded Aug 17th 1886
 at 12:10 P.M. at request of H.C. Witmer.
 Frank A. Gibson County Recorder.
 By N.S. Averill Deputy.

10