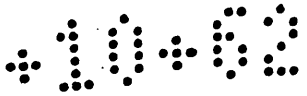
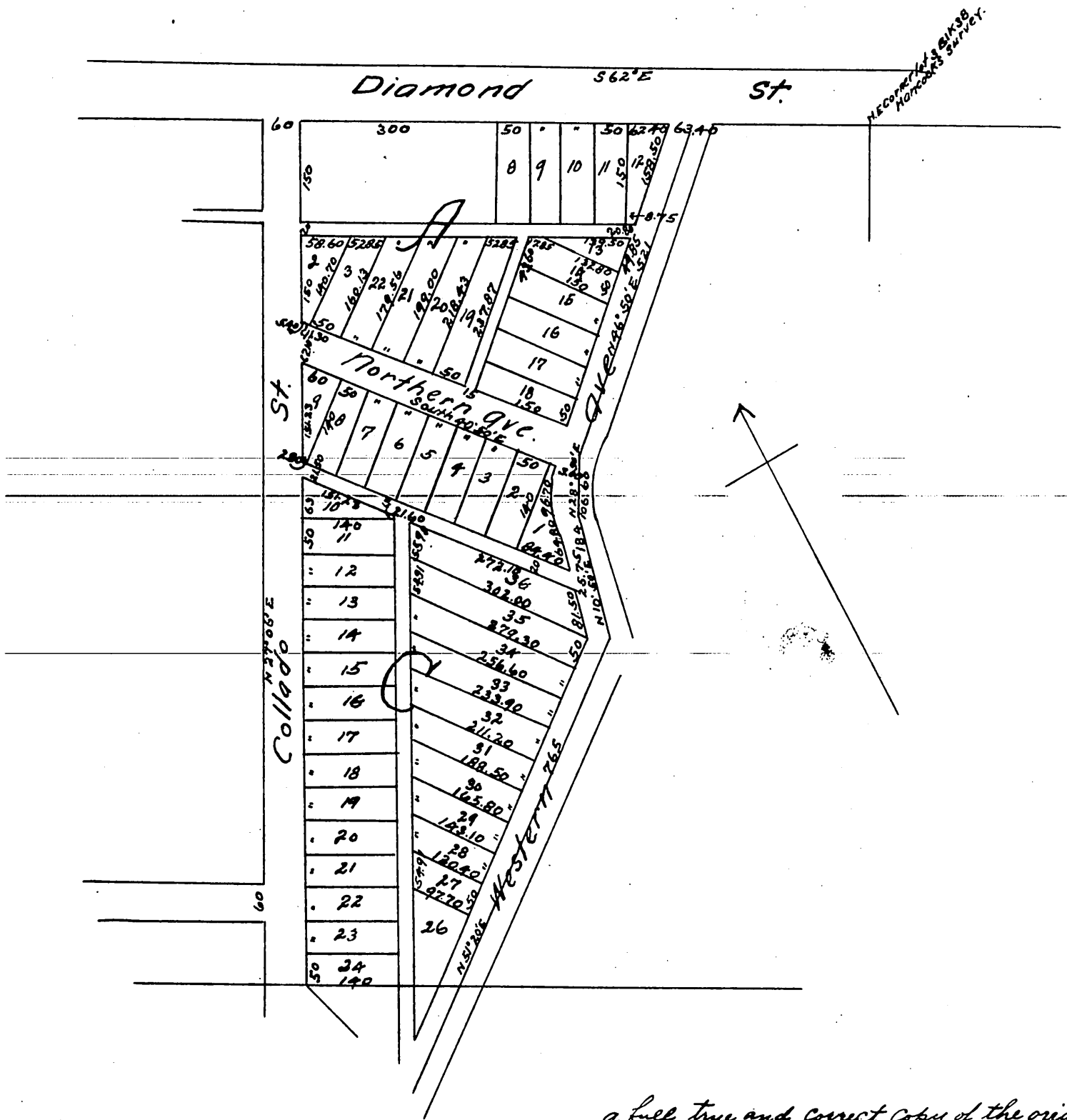


MR 10-62



MAP
OF
J. W. ELLIS' SUBDIVISION
OF PART OF
Lot 3, Block 38, Hancock's Survey.
Surveyed July 1886 By W.T. McClue C.E.
Scale 1 inch = 200 ft.



a full true and correct copy of the original recorded
August 16th 1886 at 11:53 AM at request of Edward
A. Hall (Trustee).
Frank A. Gibson County Recorder.
By Arthur Bray Deputy.