

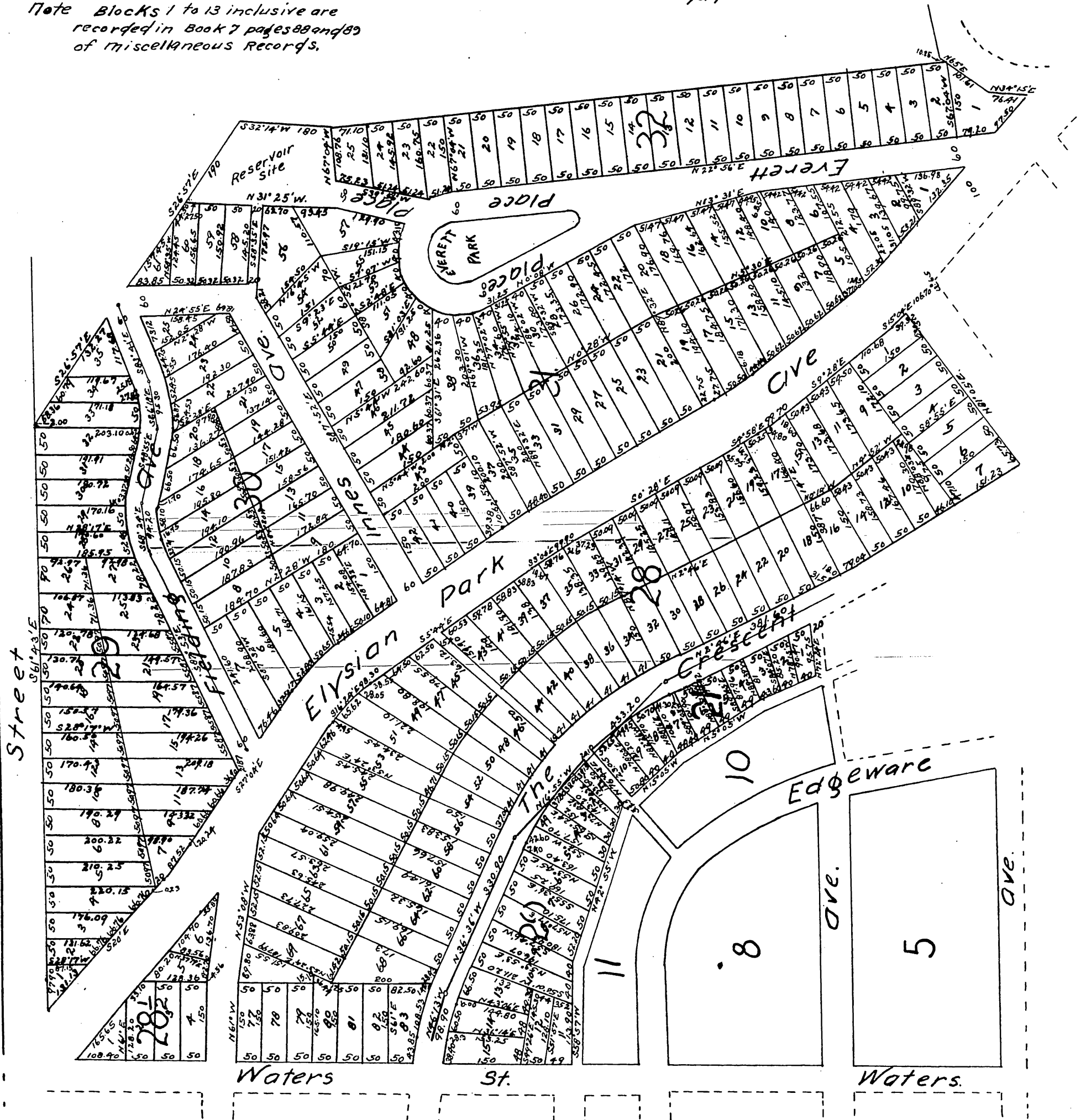
Map of Angelesño Heights in the City of Los Angeles

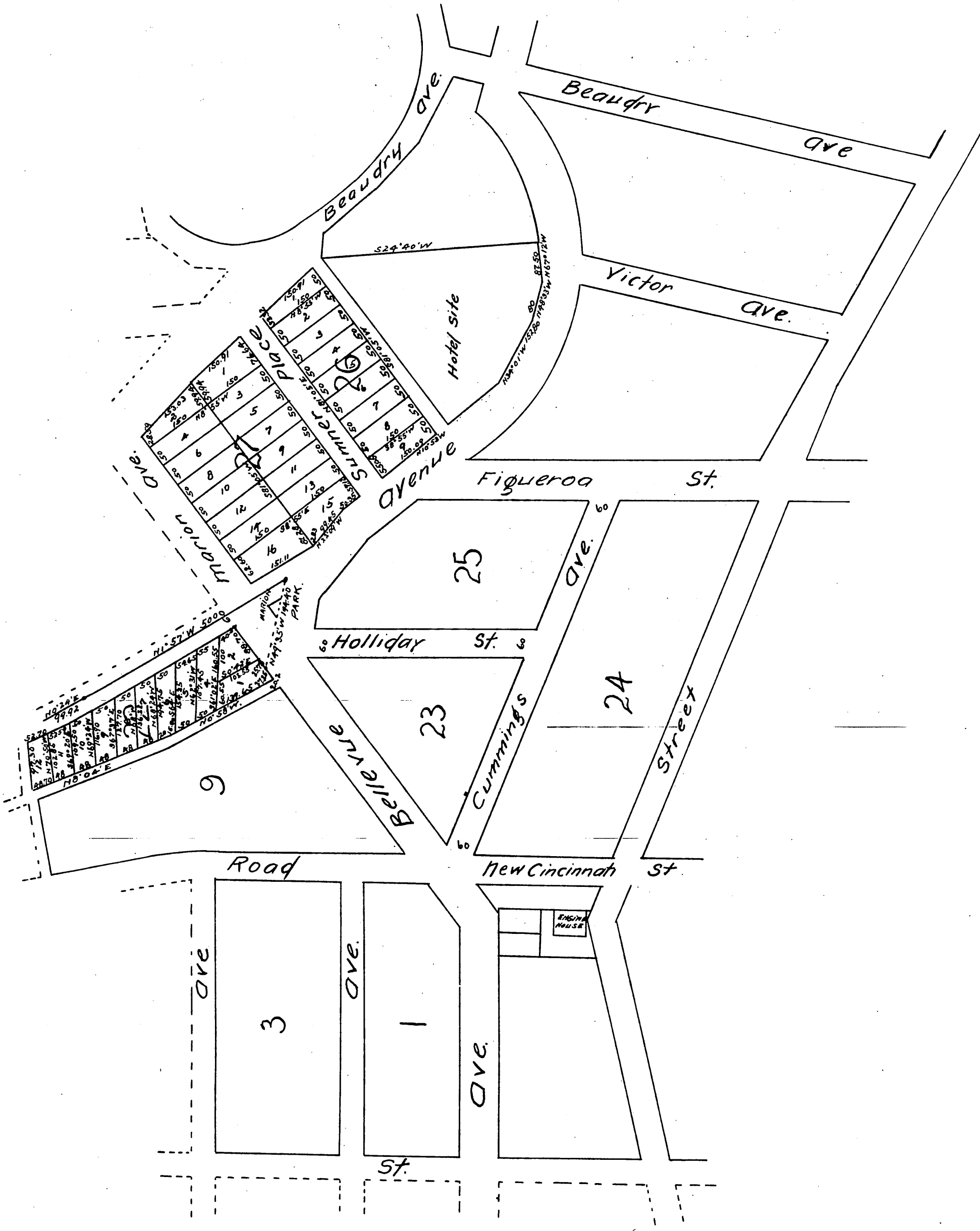
Survey completed in June 1886 by E.T. Wright.

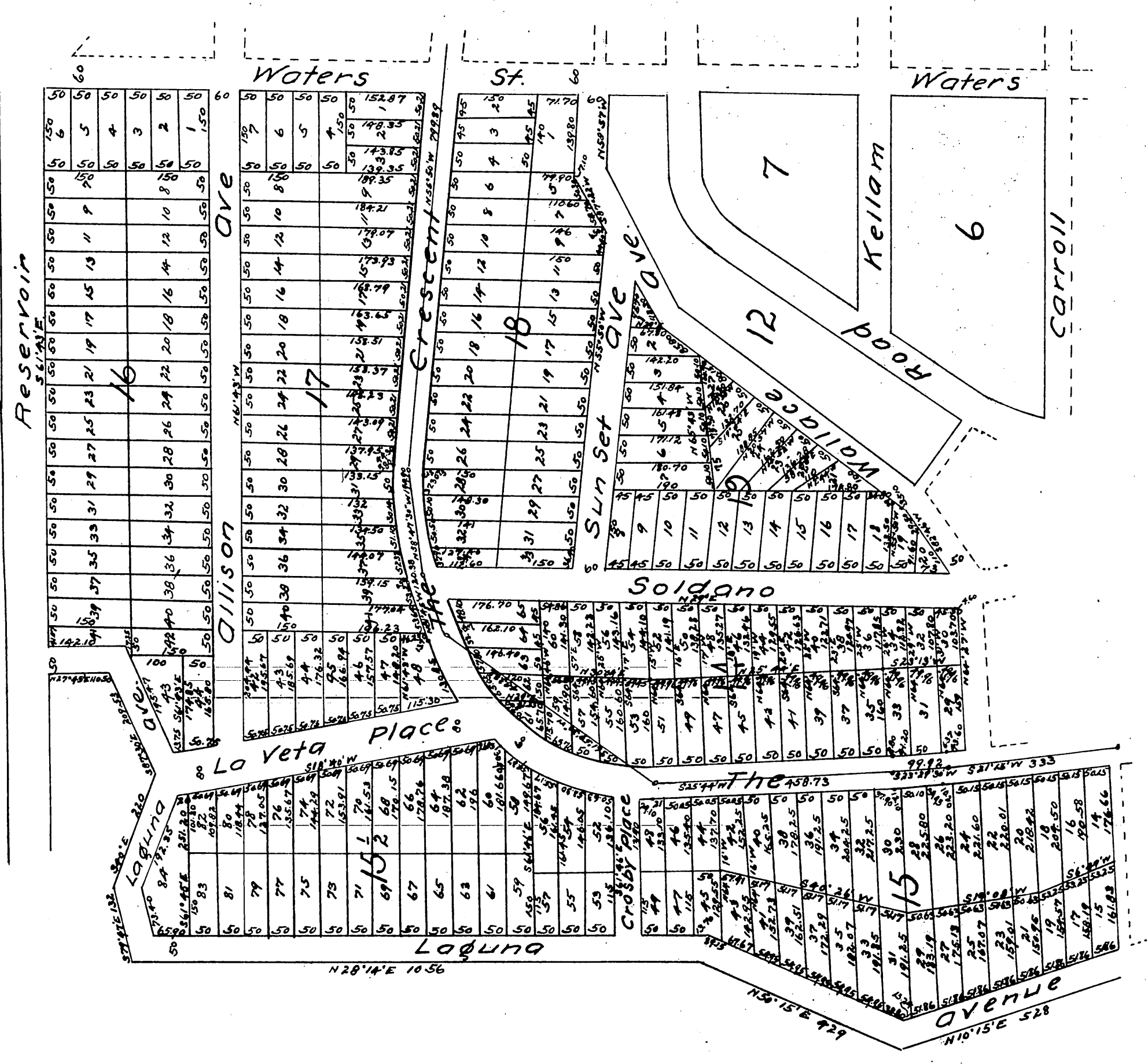
Scale 150 feet to one in.

(Reduced to a scale of 200 feet to one inch to accommodate size of this book-Recorder)

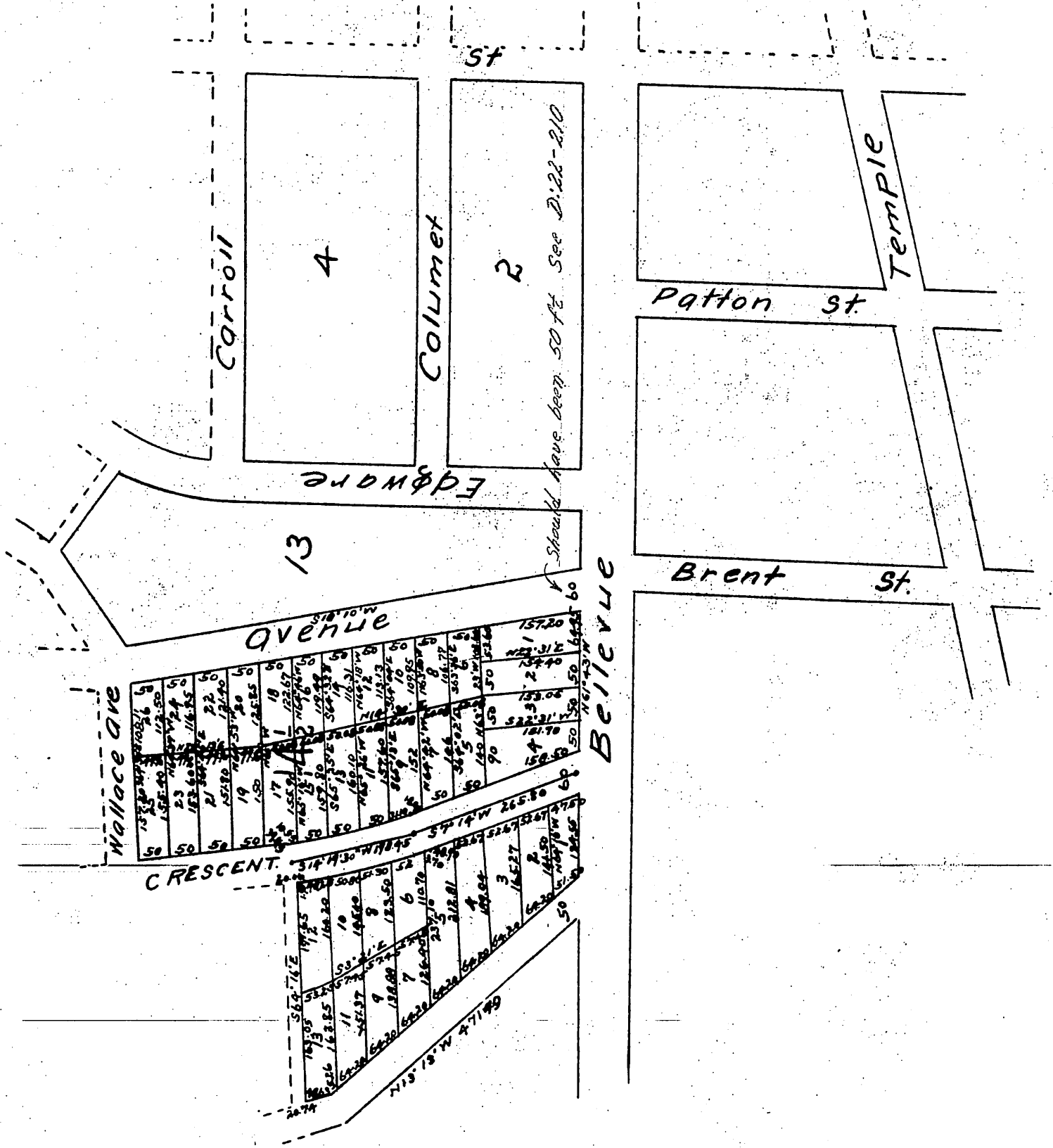
Note Blocks 1 to 13 inclusive are recorded in Book 7 pages 88 and 89 of miscellaneous records.







MR 10-66



a full true and correct copy of the original
 (reduced from a scale of 150 feet to one inch to
 a scale of 200 feet to one inch) recorded August 17th
 1886 at 4:53 P.M. at request of W.W. Stilson.

Frank A. Gibson County Recorder
 By Arthur Bray Deputy.