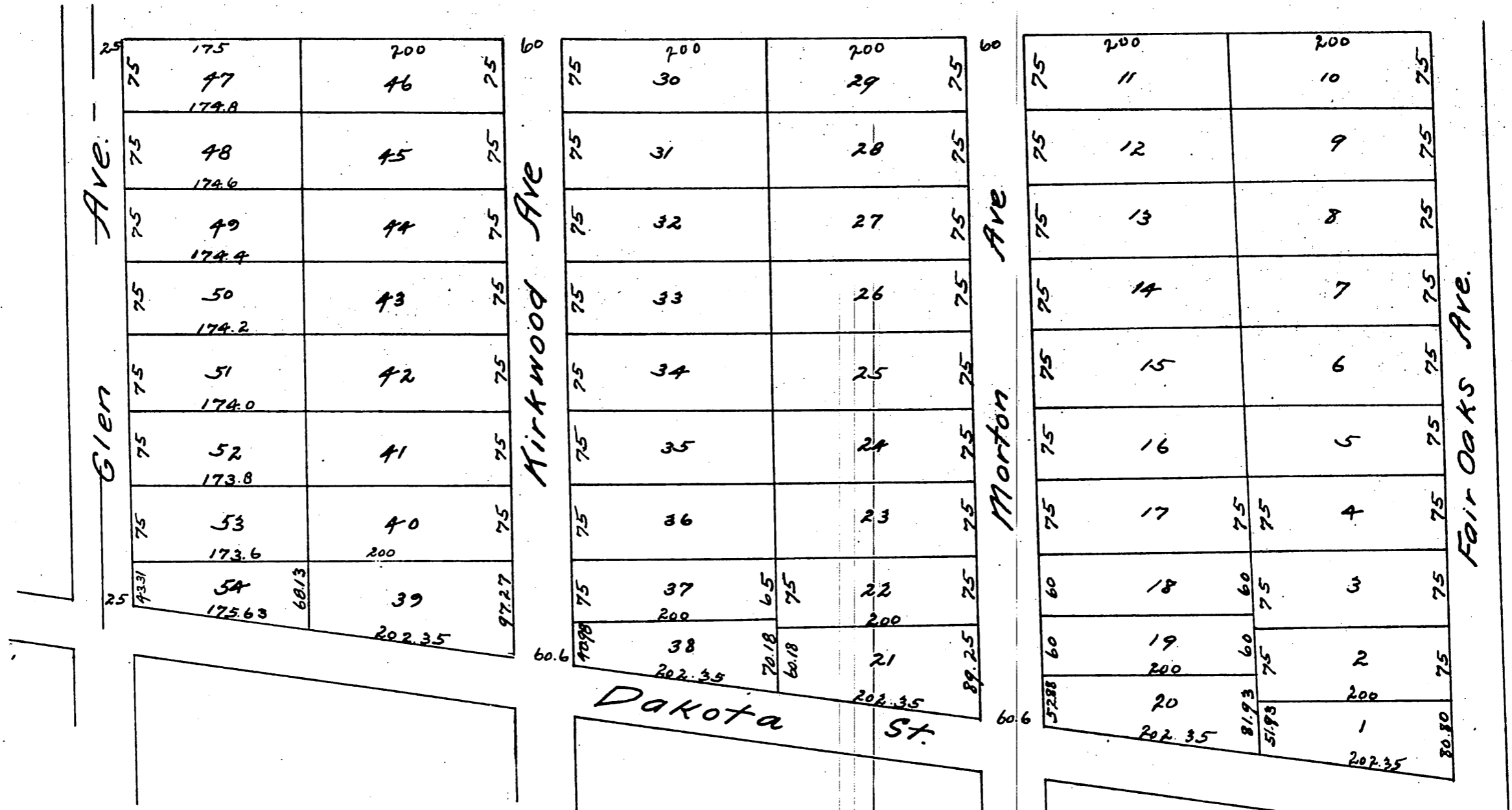


Buchanan ^{no} O'Neal's Subdivision.
 Being 20 acres off the South end of Block J in the Painter and Ball Addition.
 San Pasqual Tract Pasadena, Cal.
 Surveyed Aug 1886 by J. M. Willard C.E.
 Scale 60' = 1 inch.
 (Reduced one half)



a full true and correct copy of the original (reduced one half) recorded
 August 18th, 1886 at 11:15 A.M. at request of C.W Buchanan.
 Frank A. Gibson County Recorder.
 By Arthur Bray Deputy.