

Map

Bush & Crawford's Subdivisions

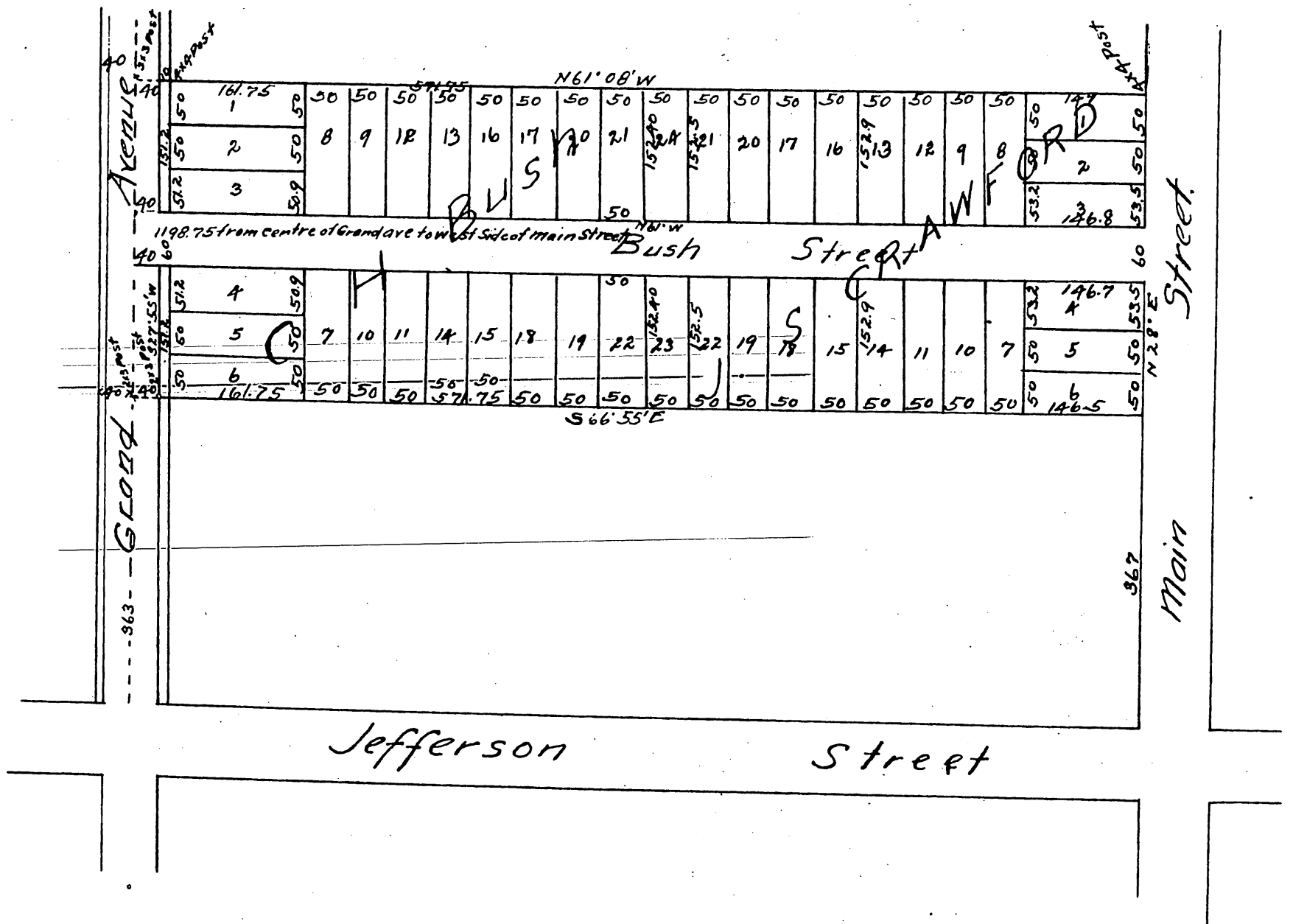
of a part of

Lot 6 Block 2, Hancock's Survey
of Los Angeles City Cal.

made in August 1886 by J. A. Bernal Surveyor.

Scale 80 feet = 1 inch.

Reduced one half



a full true and correct copy of the original (reduced one half) recorded
August 8th 1886 at 4:31 P.M. at request of Bush & Crawford.

Frank A. Gibson County Recorder.

By Arthur Bray Deputy.