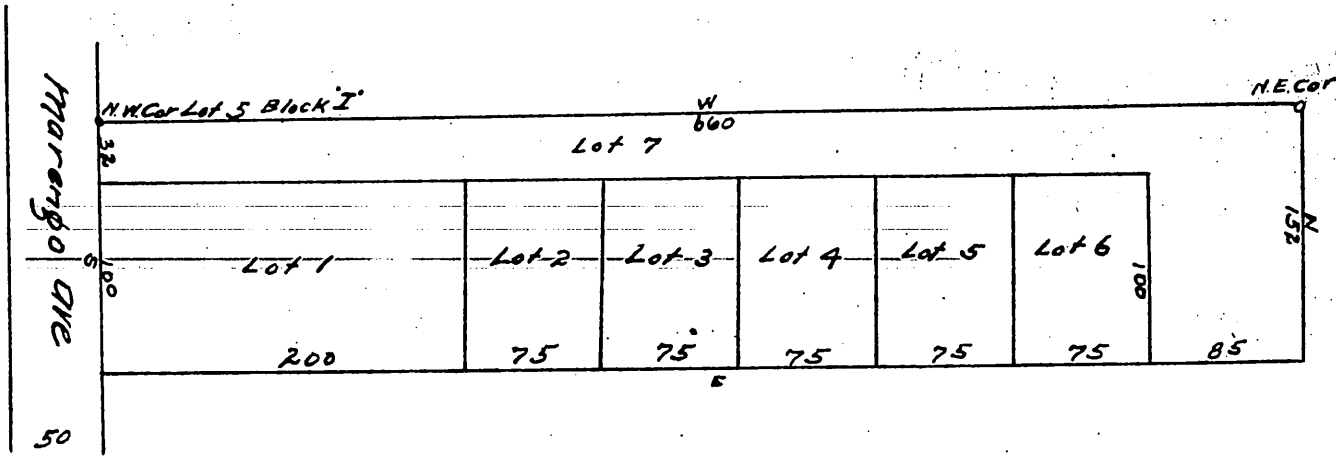


PLAT  
OF  
A. Cruickshank's Subdivision,  
of  
the 17.2 acres of Lot 5 Block "I"  
San Pascua Tract  
L. V. L. & W. Ass'n Pasadena, California.  
William Thomson, Sur.  
Scale 30 ft. = 1 in.  
(reduced one half)



a full true and correct copy of the original (reduced one half)  
 recorded Aug 19<sup>th</sup> 1886 at 12.31 PM at request of A. Cruickshank  
 Frank A. Gibson County recorder  
 By N. S. Orrill Deputy.