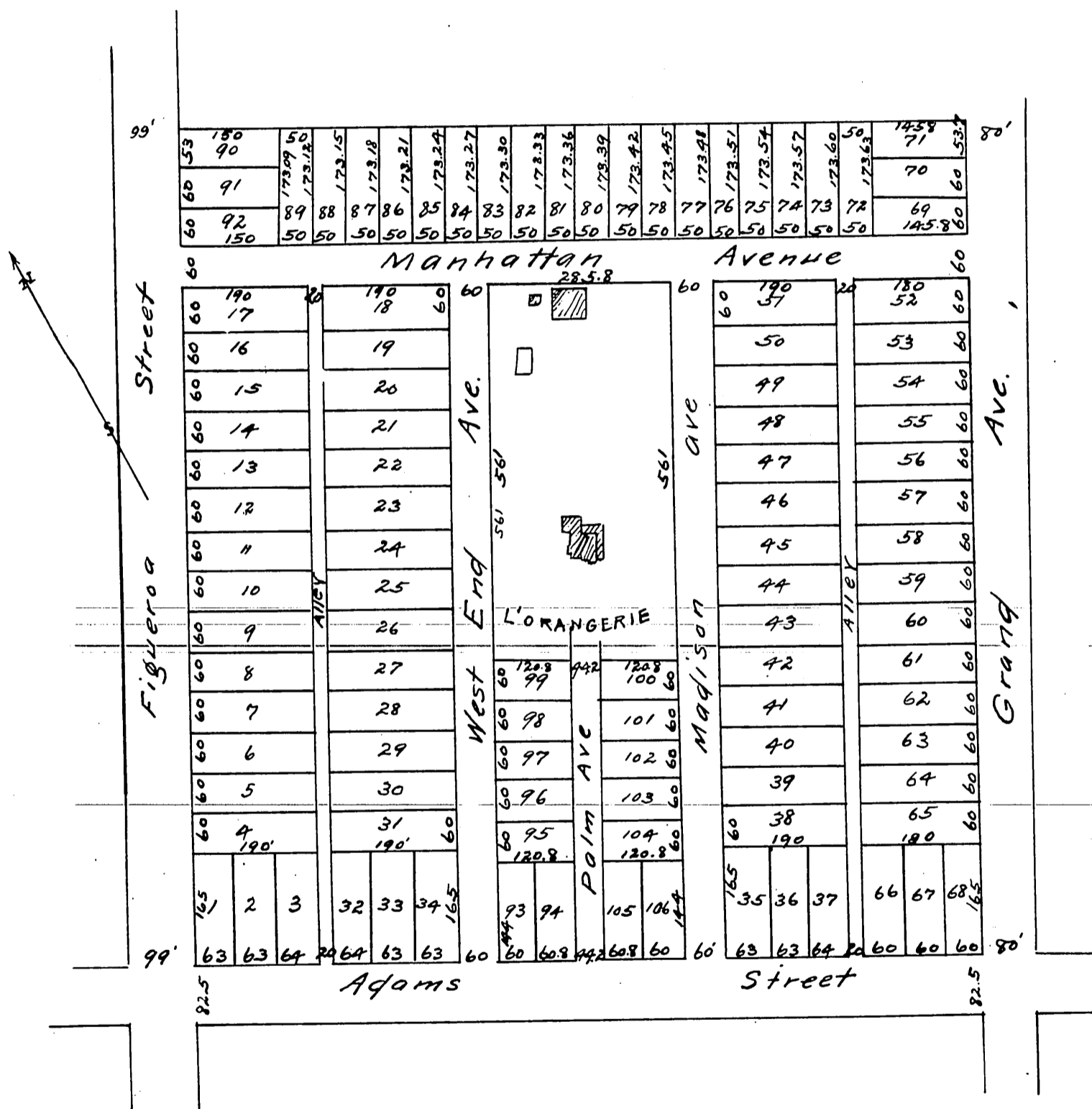


MAP  
of the  
**Longstreet Tract.**  
Lot 4, Block 1 of Hancock's Survey of Los Angeles City,  
Los Angeles Cal.  
H.J. Stevenson, Sur Oct. 1883.  
Scale 200 ft per inch

Note Palm Avenue reserved as private property.



a full true and correct copy of the original recorded  
at 12:30 M  
August 19<sup>th</sup> 1886, at request of C.J. Richards.  
Frank A. Gibson County Recorder.  
By Arthur Bray Deputy.