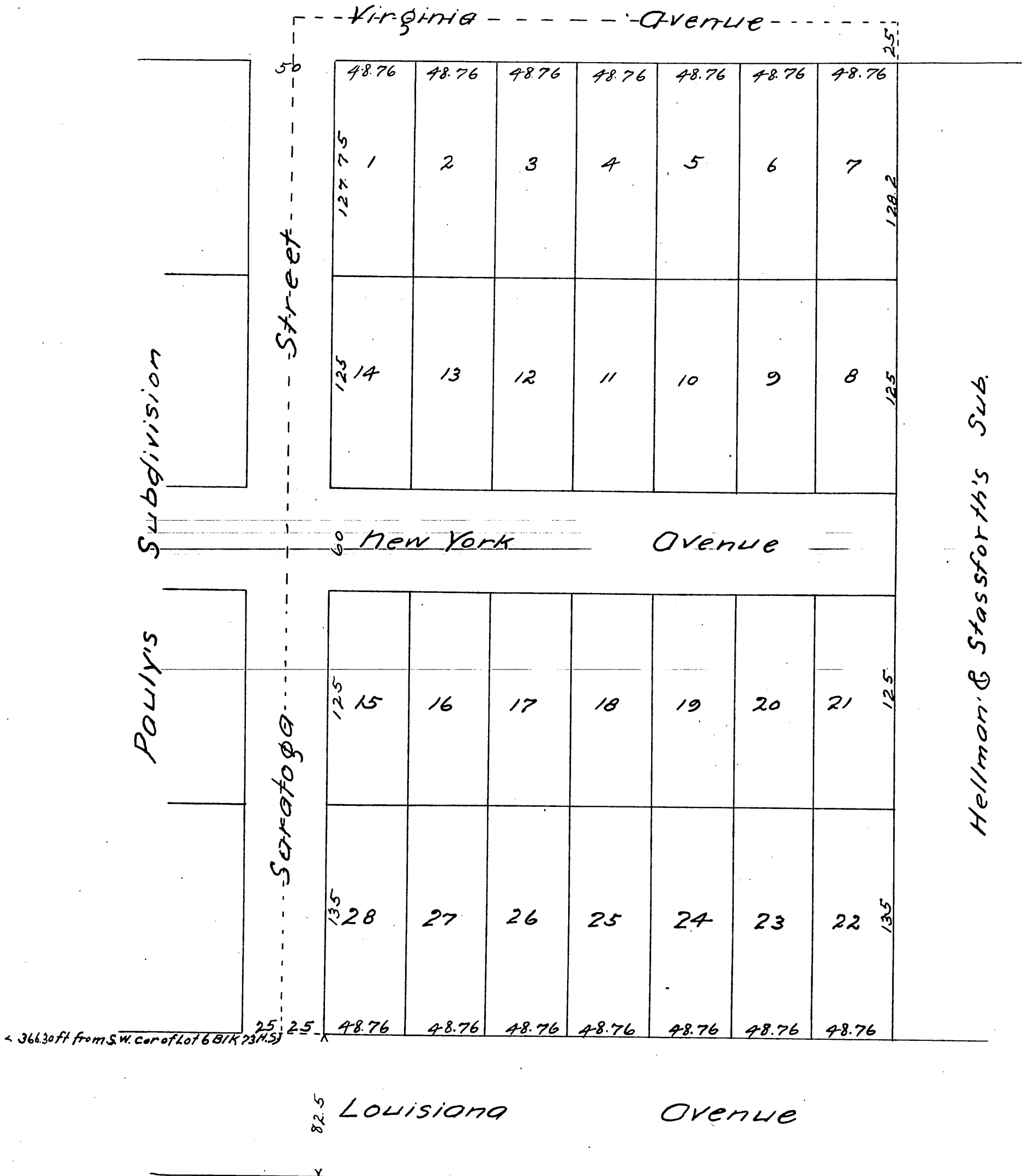


Map  
of  
Peterson's Subdivision  
of Lot 6 of Workman & Hellman's  
Subdivision of Block 73 H. S. of  
Los Angeles City Cal.

72

Subdivided in Aug. 1886 by J. A. Bernal Surveyor  
Scale 60ft = 1. inch



A full true and correct copy of the original recorded,  
August 19th 1886 at request of P. Peterson.  
Frank A. Gibson County recorder  
By Arthur Bray Deputy.