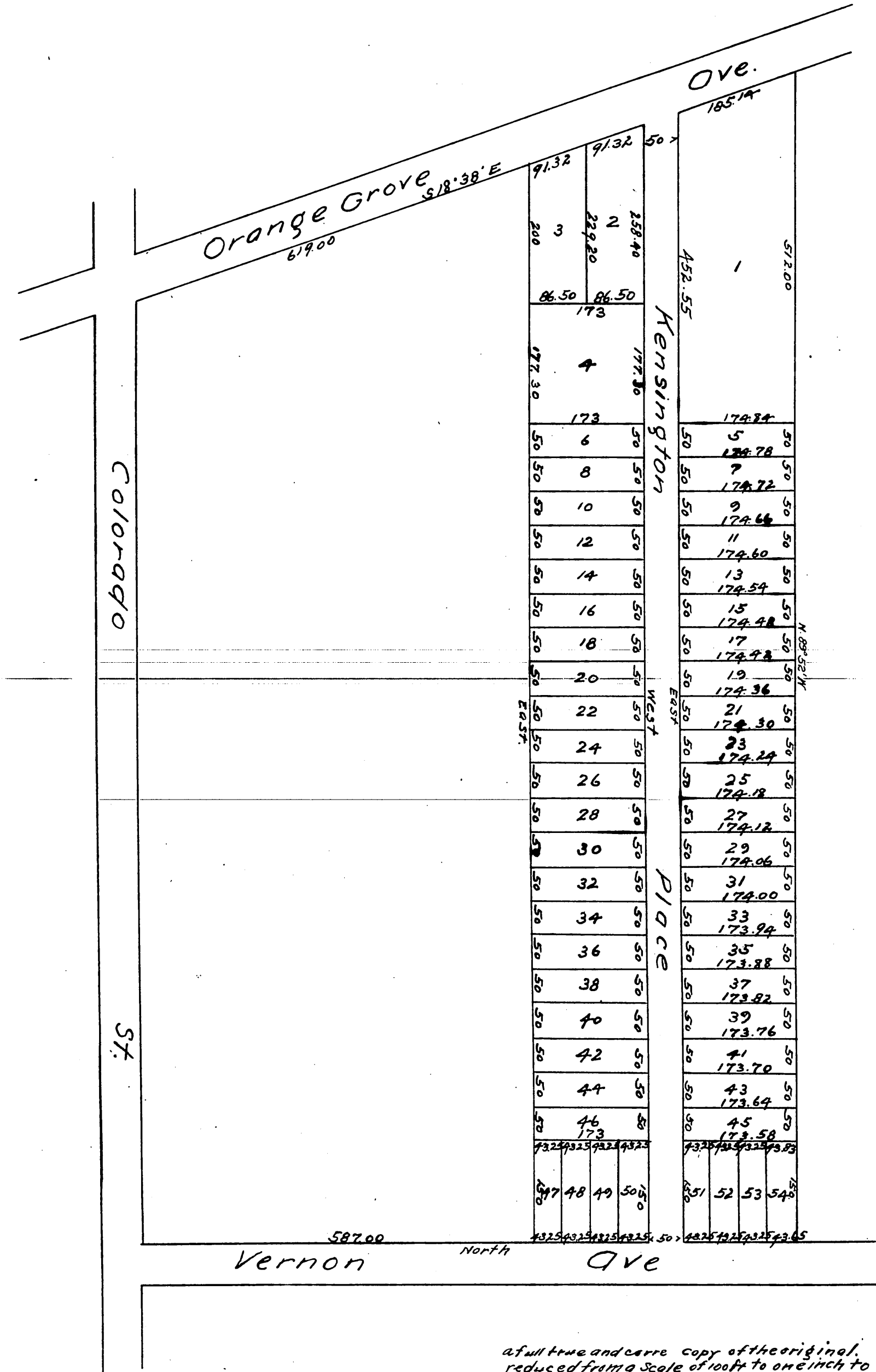


Map of Masters' Subdivision.

Pasadena Los Angeles Co. Cal.

Surveyed May 1886 by E.T. Wright Co. Sur.

Scale 100 ft to one inch.



a full true and corre copy of the original.
 reduced from a scale of 100 ft to one inch to
 a scale of 150 ft to one inch) recorded August
 19th 1886 at 4:26 P.M. at request of W.N. Masters.
 Frank A. Libron County Recorder.
 By Arthur Bray Deputy.