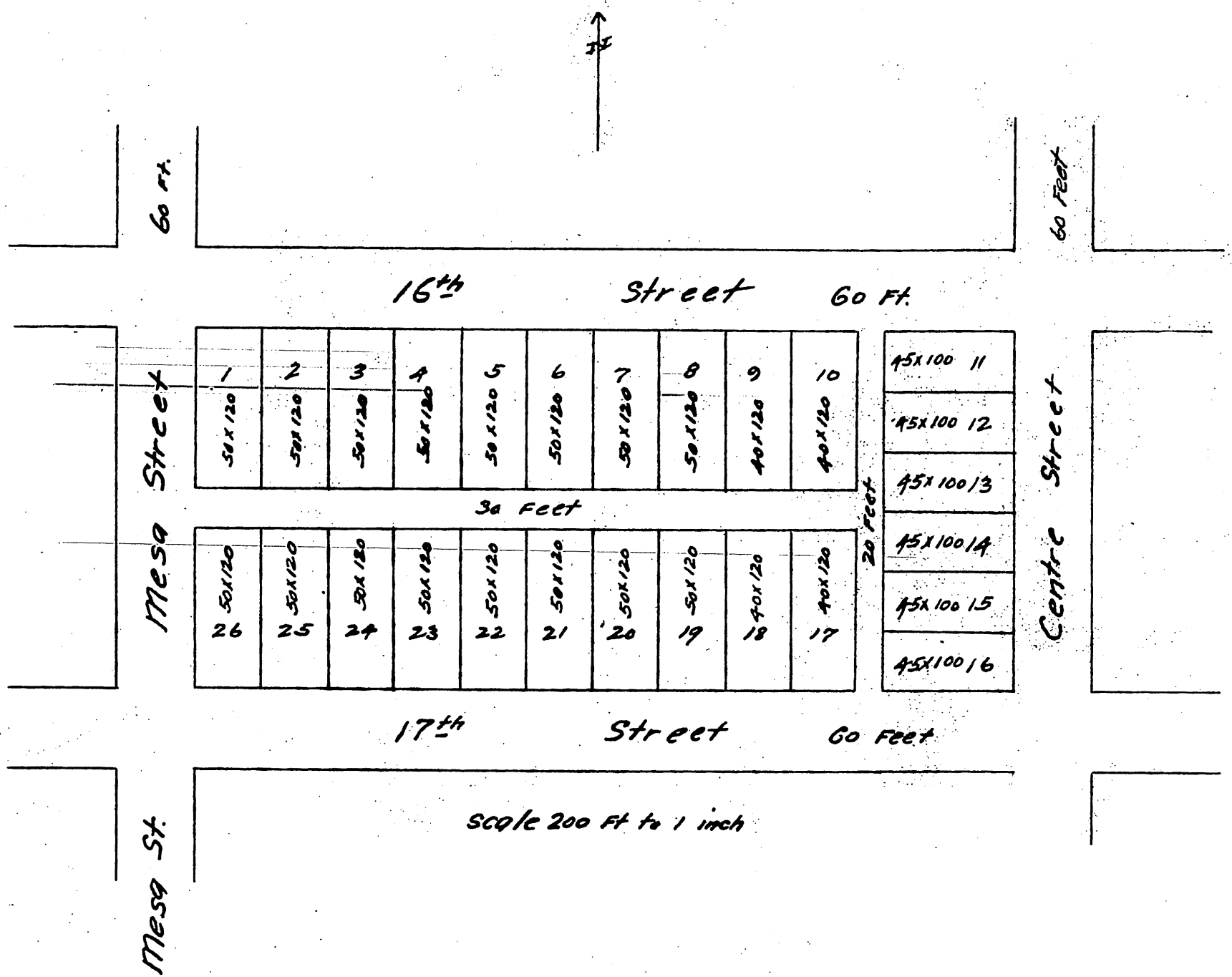


Anderson^{1st} Moulthrop's Subdivision
of Block No 30 in the Town of
San Pedro
Los Angeles County Cal.



at full true and correct copy of the original (one the scale
of 100 feet to one inch) recorded August 25th 1886 at
36 Min Past 1. PM. at request of J. W. Anderson.
Frank A. Gibson County Recorder.
By Arthur Bray Deputy.