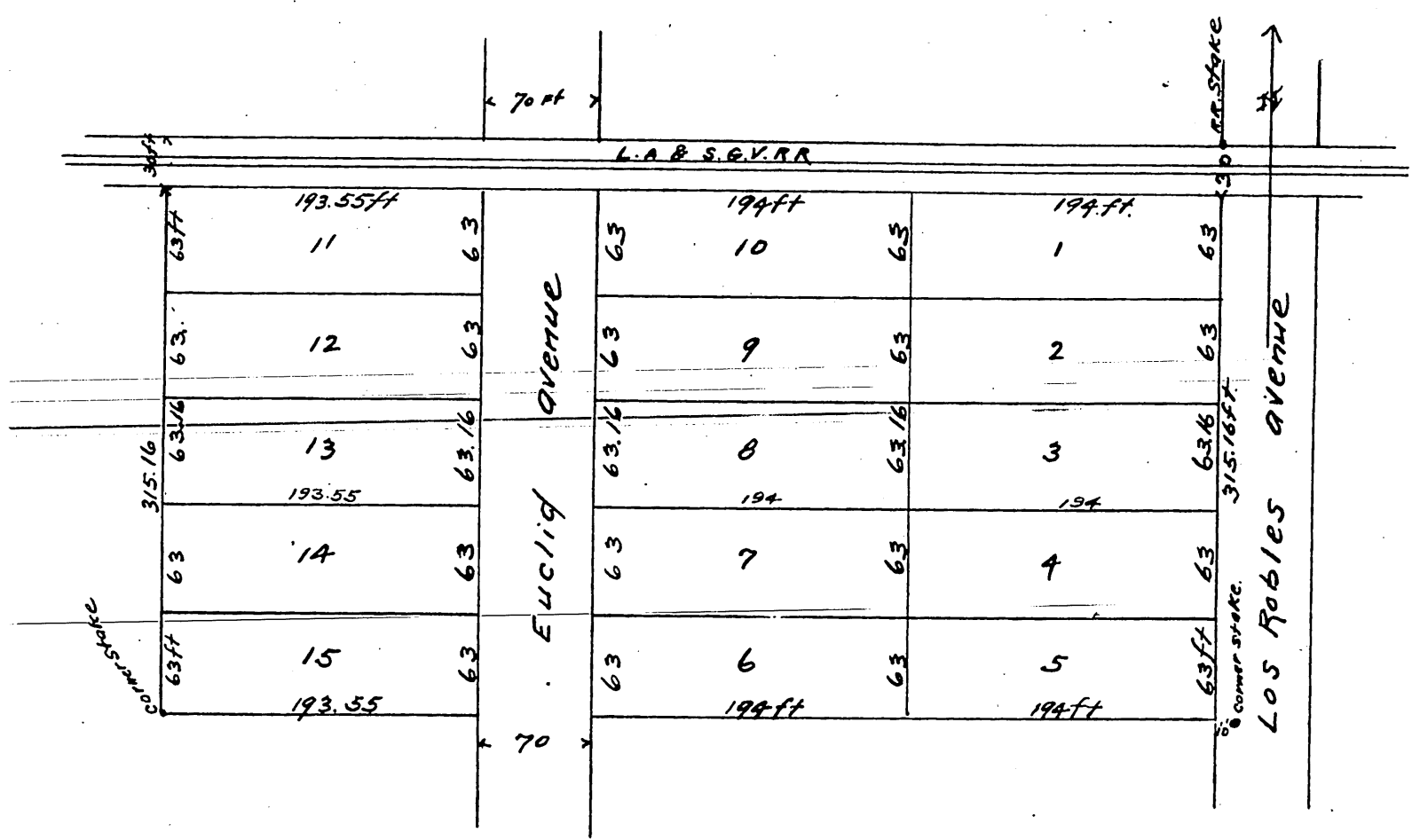


E. H. Raymond's
 Subdivision of the
 North half of Lot 6, Block C
 San Pasqual Tract
 scale 60 feet = one inch
 City of Pasadena Cal.
 August 27th 1886
 Wm W. Mills C.E.
 Surveyor.



A full true and correct copy of the original
 (reduced to the scale of 100 feet to one inch)
 recorded August 28th 1886 at 44 min past 9 A.M.
 at request of Mrs Elizabeth Raymond.
 Frank A Libeou County Recorder.
 By Arthur Bray Deputy.