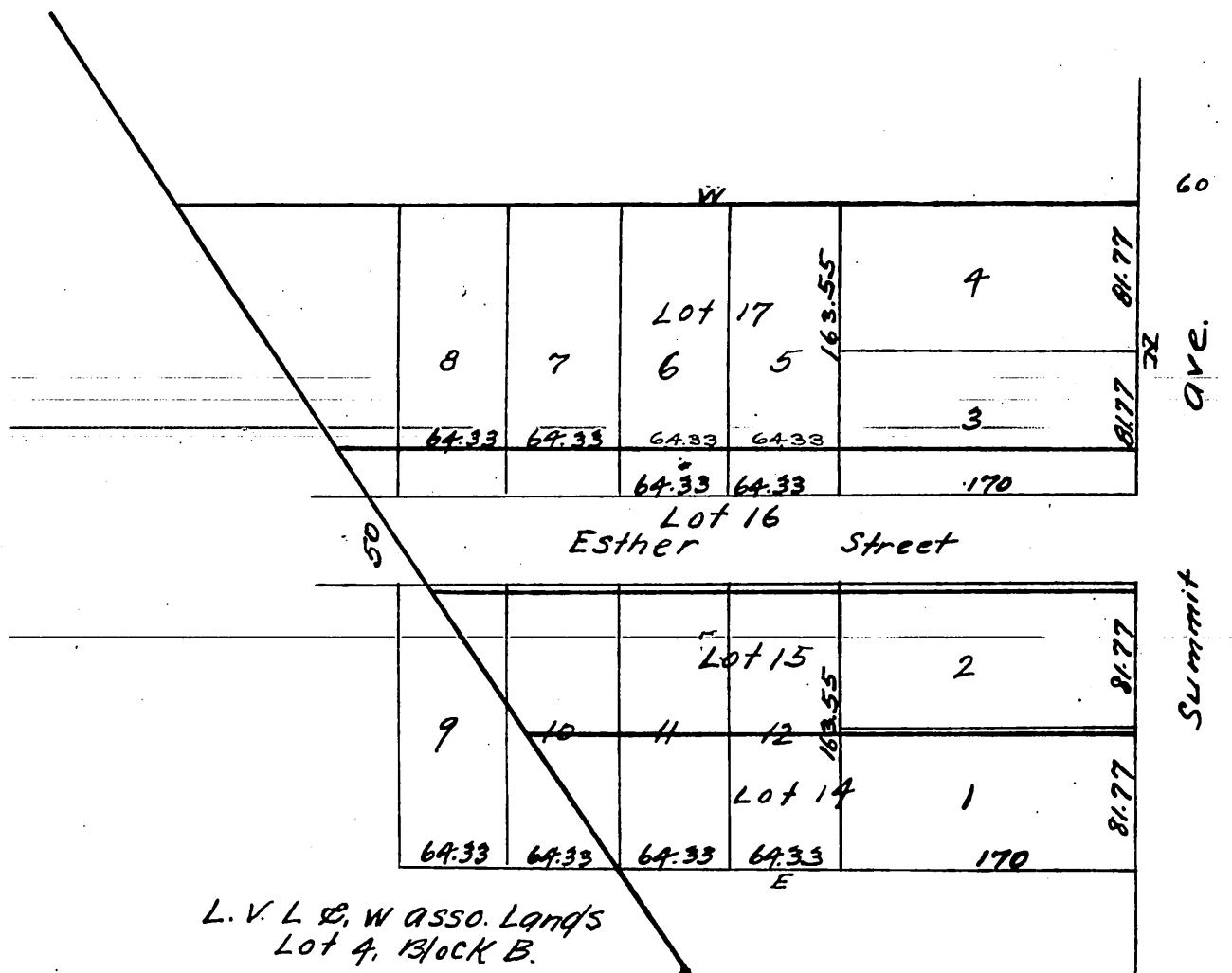


Plat of the  
 Sub-div. of Lots 14 & 15 and part of Lots 16 & 17  
 of L. H. Michener's sub-div. of the Summit  
 Ave Tract as Rec. BK 7. P. 60 also a part  
 of Lot 4 B'K B, L. V. L. & W. Ass's Lands  
 Heavy (red) lines show original sub div.  
 Surveyed July 1886 by W. Thomson  
 Scale 100 ft = 1 in.



a full true and correct copy of the original recorded  
 August 28th 1886 at 50 min Past 11. A.M. at request of L. H. Michener.

Frank G. Libson County Recorder

By Arthur Bray Deputy.