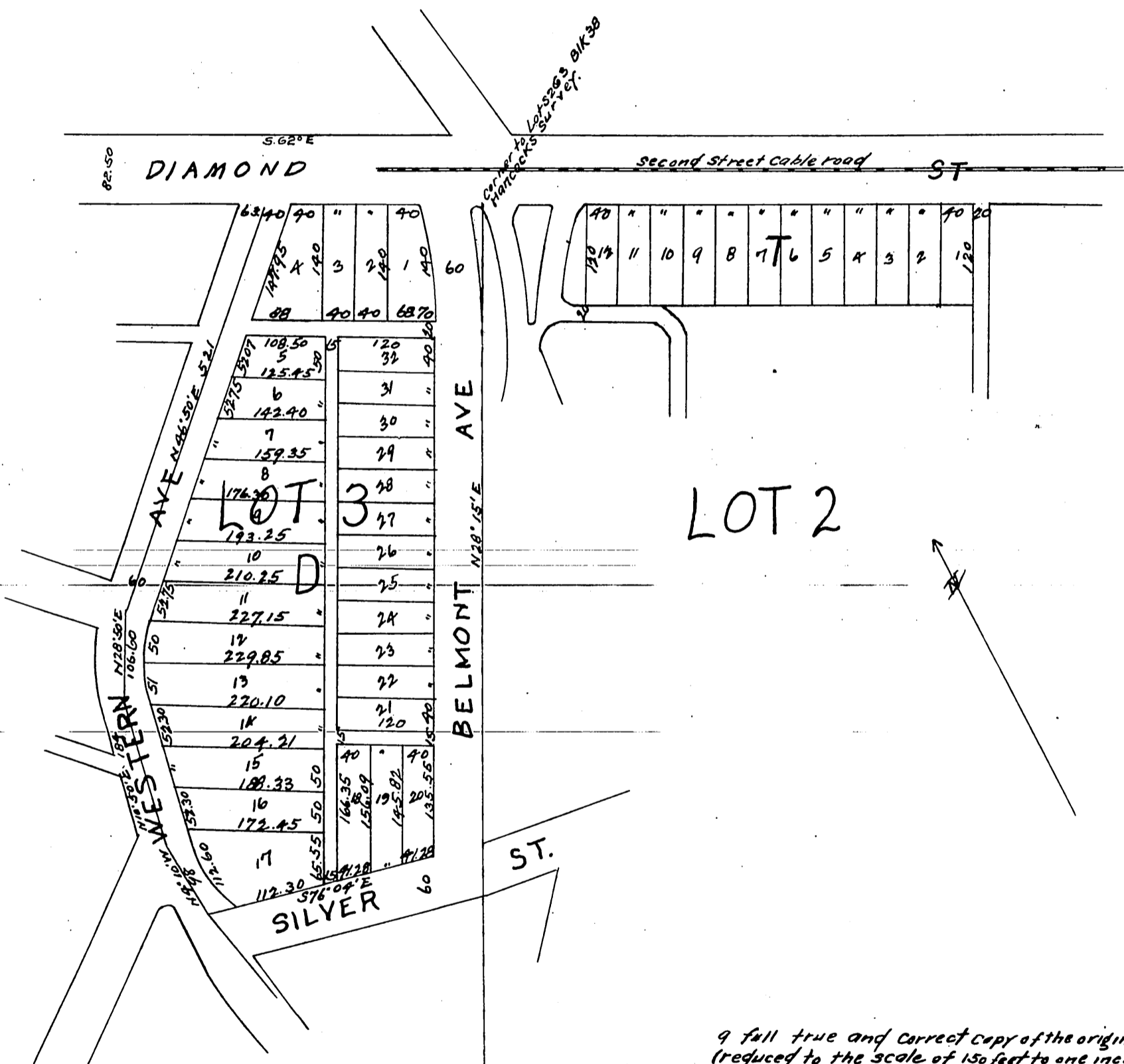


MAP
of
J. WELLIS,
SUBDIVISION OF PARTS OF
LOTS 2 & 3 BLOCK 38,
HANCOCK'S SURVEY.

scale 1 inch = 100 ft.
surveyed July 1886 by W. F. McClure.



a full true and correct copy of the original
(reduced to the scale of 150 feet to one inch)
recorded Sept 2^d 1886 at 43 min past 11 AM
at request of Edward A. Hall Trustee.
Frank A. Gibson County Recorder
By Arthur Bray Deputy.