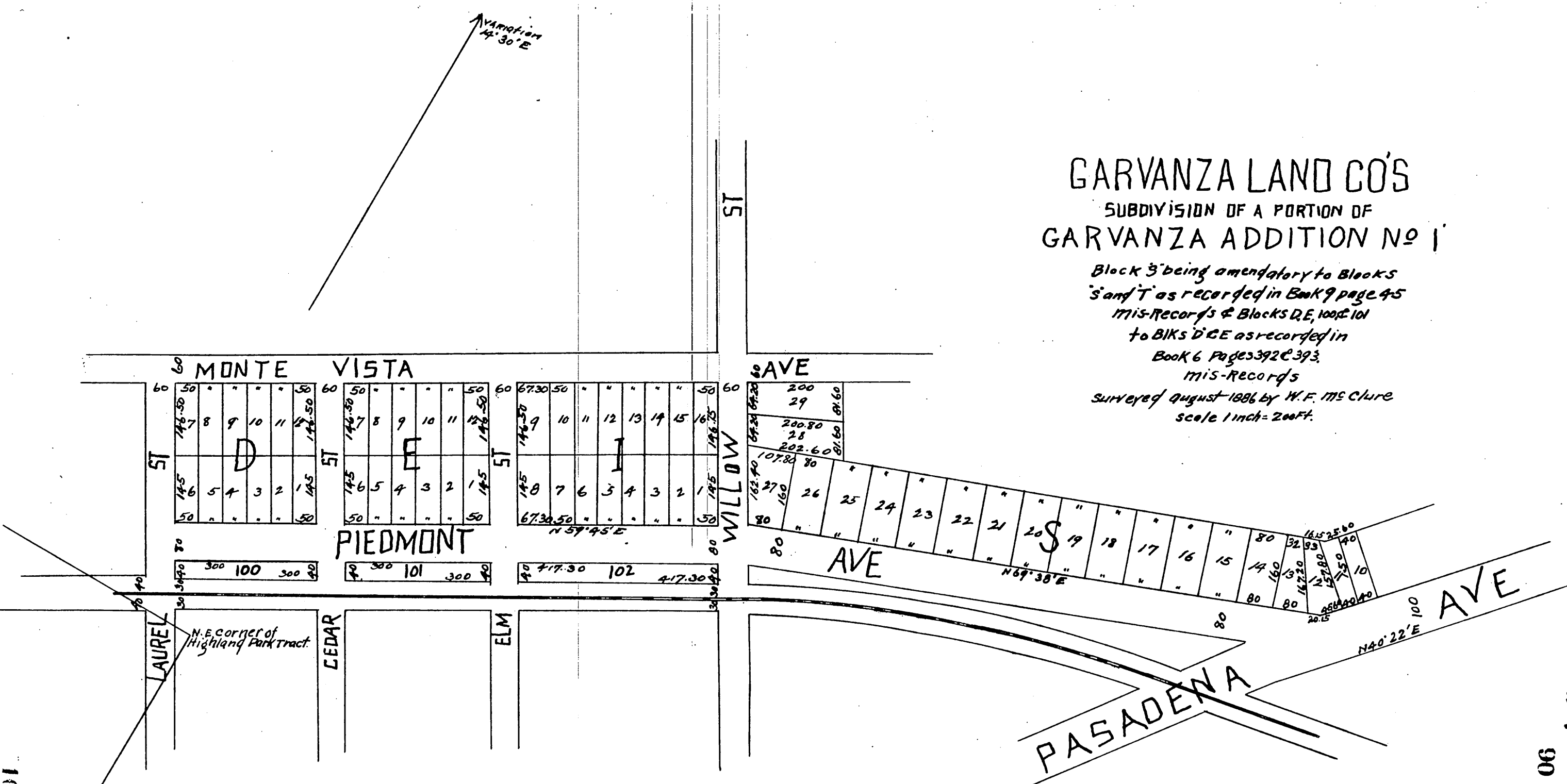


GARVANZA LAND CO'S

SUBDIVISION OF A PORTION OF GARVANZA ADDITION NO 1

Block 3 being amendatory to Blocks
S and T as recorded in Book 9 page 45
Mis-Records & Blocks D, E, 100 & 101
to BIKs D & E as recorded in
Book 6 Pages 392 & 393
Mis-Records
Surveyed August 1886 by W. F. McClure
Scale 1 inch = 200 ft.



a full true and correct copy of the original
recorded September 4th 1886 at 3 1/2 minutes
past 10 A.M. at request of Jas Booth,
Frank A. Gibson County Recorder.
By Arthur Bray DEPUTY.