

Carleton & Summerfield's Subdivision

OF THE

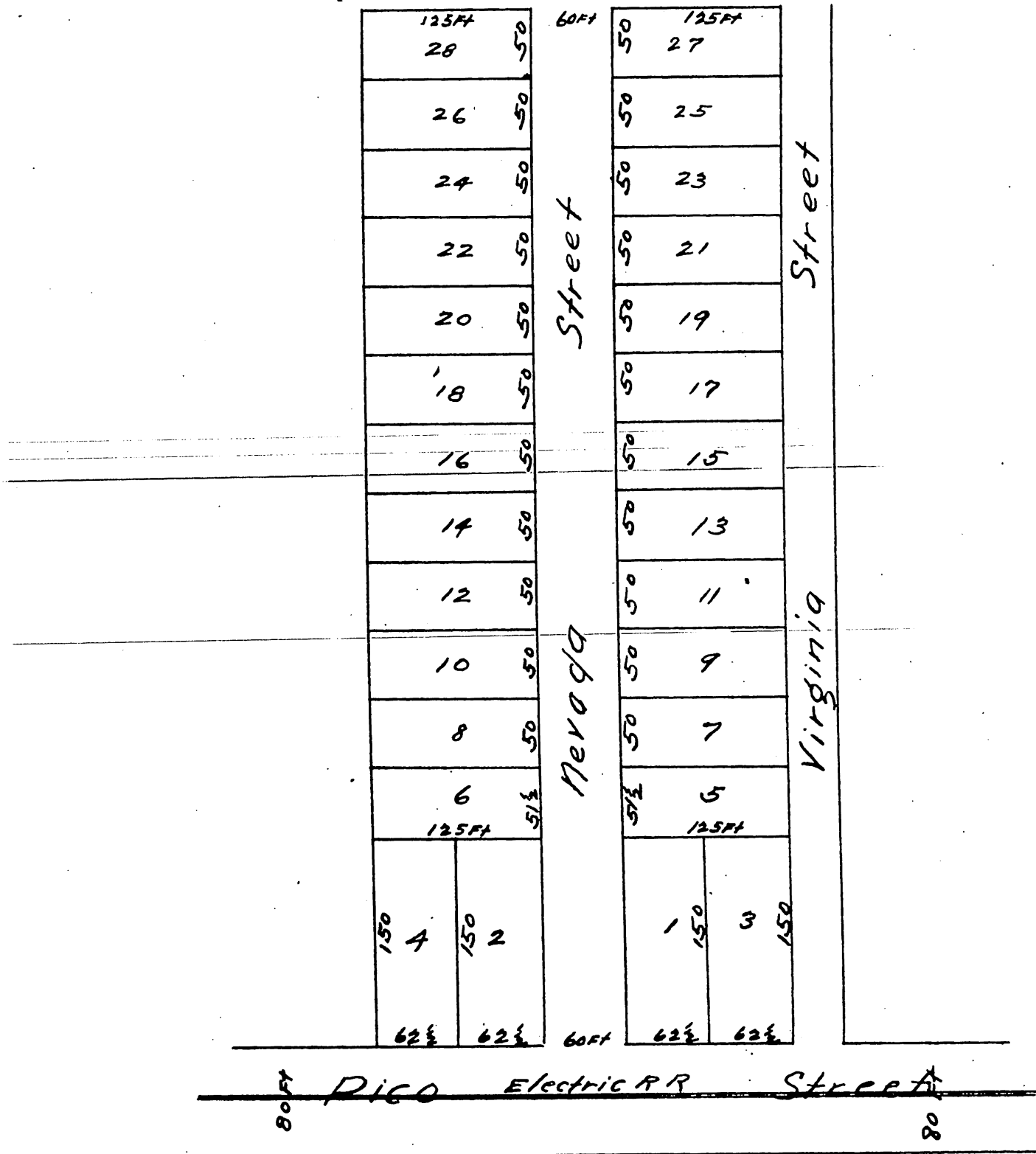
Dunigan Tract.

Situated in Los Angeles City Cal.

Being a part of lot one @ Block B of Hancock's Survey of the thirty five (35) acre Donation lots commencing at a point where the East line of Virginia Street intersects the South line of Pico Street thence South westerly along East line of Virginia Street 11²² Chains, thence South 62 $\frac{1}{2}$ ° East 9²⁰ Chains thence Northerly parallel to Virginia Street 11²² Chains to Pico Street, thence Westerly along the South line of Pico Street to the place of beginning containing five $\frac{27}{100}$ (5 $\frac{27}{100}$) acres of land

Scale 50 ft = 1 inch

(Reduced to scale of half)



a full true and correct copy of the original reduced to the scale of 100 ft to one inch
recorded Sept 10 1886 at 11 min past 8 A.M. at request of M. Summerfield.

Frank A. Gibson County Recorder.

By Arthur Bray Deputy.