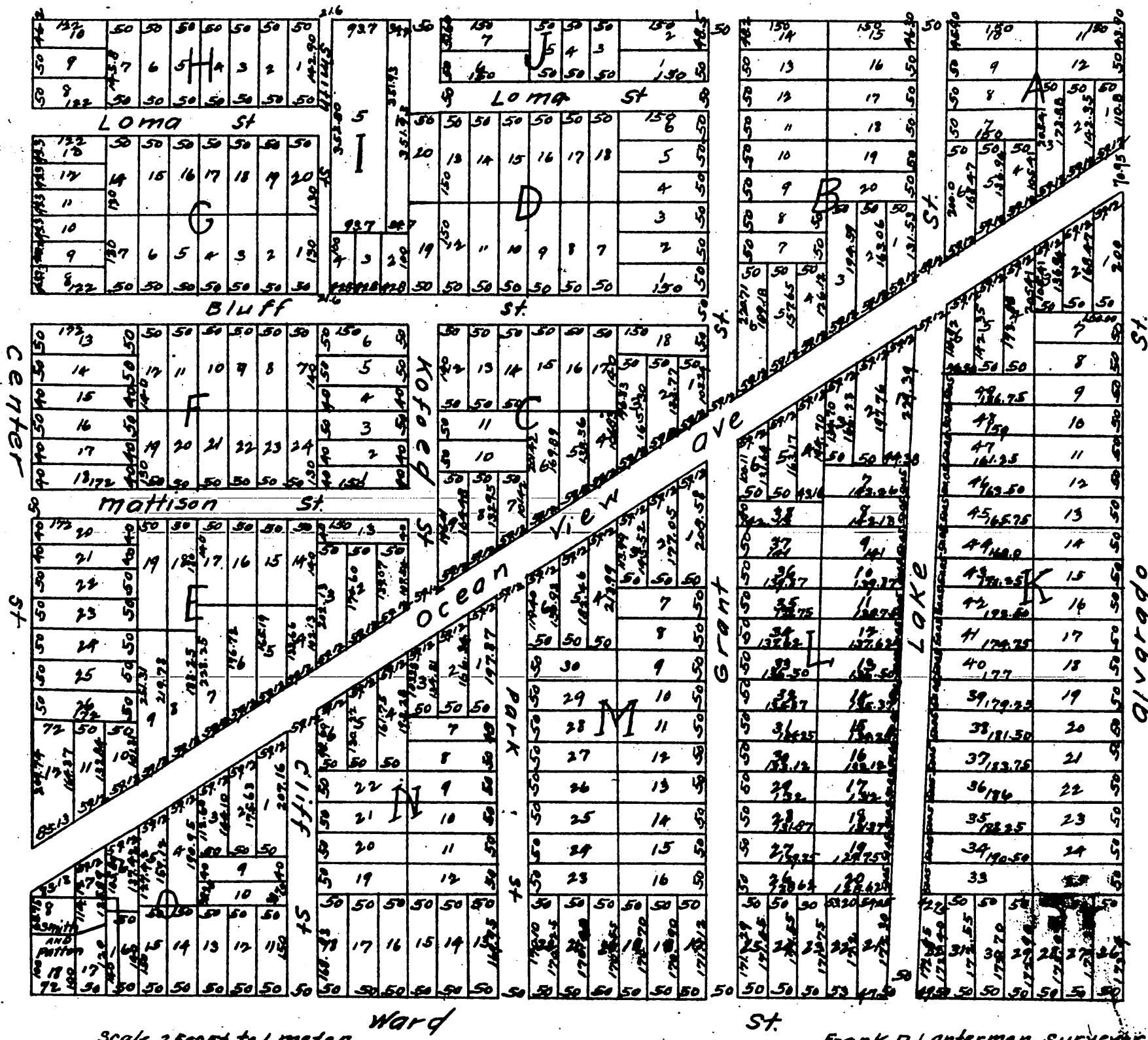


Knob Hill Tract

Being Lot 8 and the East 1/2 of Lot 7 Block 26 Hancock's Survey.



Scale 2500ft to 1 meter.

Frank D Lanterman Surveyor
May 1886

a full true and correct copy of the original (reduced to the scale of 200 feet to one inch) recorded Sept 10th 1886 at 10⁵⁵ a.m. at request of S. A. Mattison and J. C. Kofoed.

Frank A. Gibson County Recorder
By Arthur Bray Deputy.