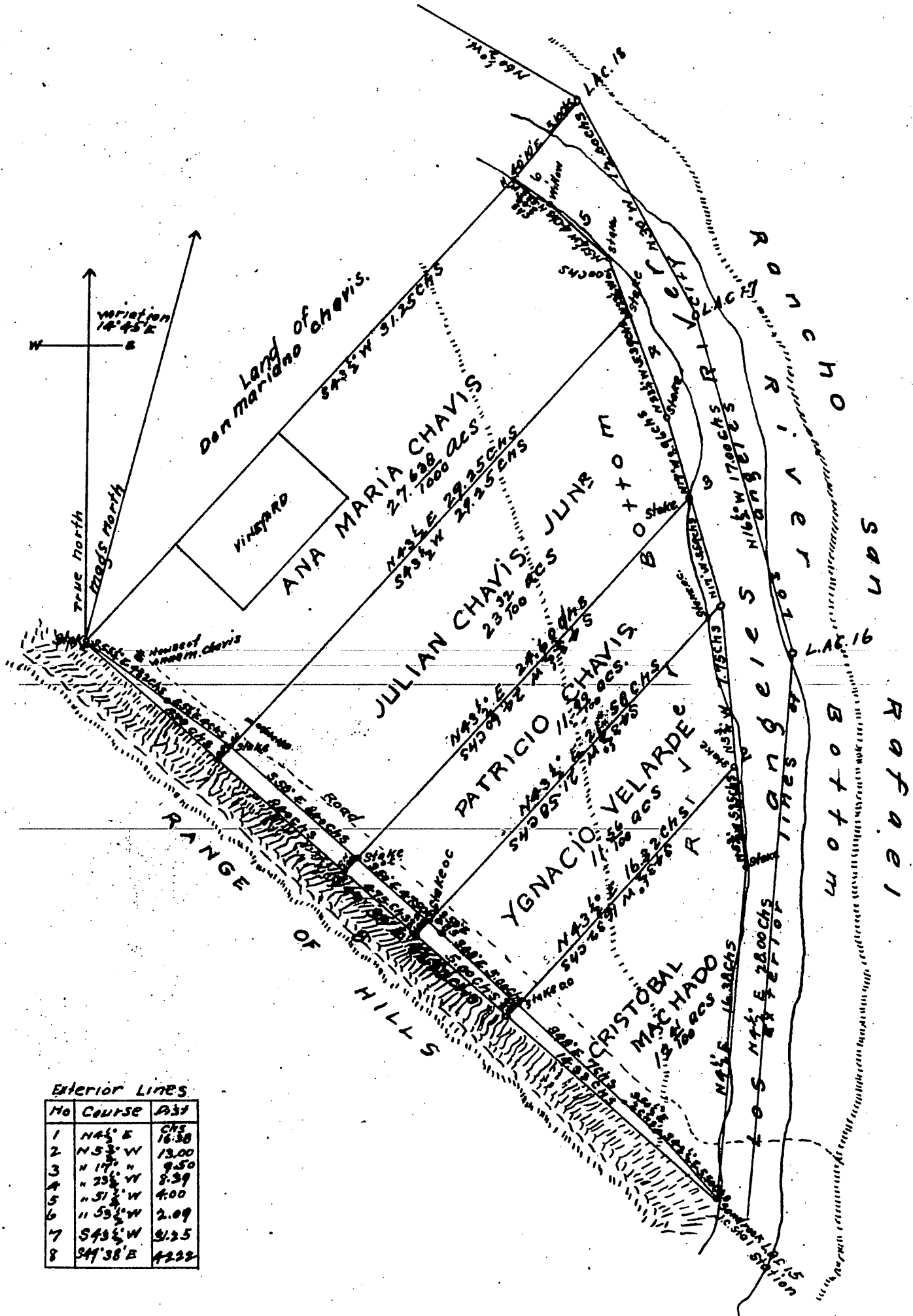


Plat  
of a  
Tract of Land  
belonging to  
JULIAN CHAVIS

with the subdivisions as ordered by him  
for Partition in the portions and to the per  
sons therein named containing 86 97 acs  
Surveyed by W. P. Reynolds Surveyor November 1871  
Scale 4 chs per inch  
Variation 14° 45' E

Drawn by G. Windale



A full true and correct copy of the original  
(reduced to the scale of 6 chs to one inch)  
recorded Sept 10th 1886 at 2.55 P.M. at  
request of, H. H. Galloway.

Frank A. Gibson County Recorder.  
By Arthur Bray Deputy.