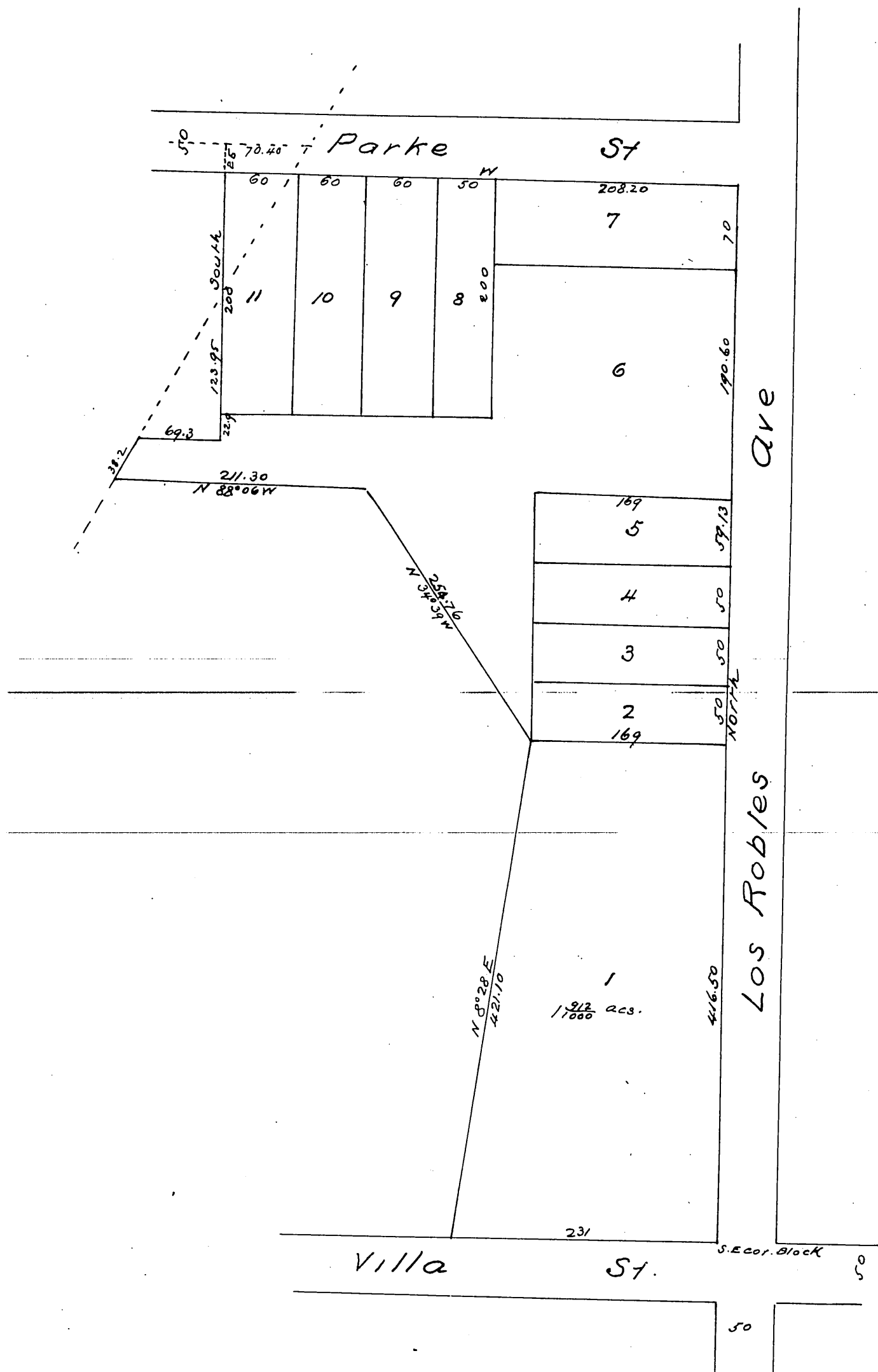


Plat of  
 Eliza Jacobson's Subdivison  
 of Lot 6 "Block S"  
 San Pascual Tract  
 Pasadena Cal

Williell Thomson Surveyor Scale 100ft=1 in.



a full true and correct copy of the  
 original recorded September 13<sup>th</sup> 1886  
 at 9:00 am at request of Eliza Jacobson  
 Frank A. Gibson County Recorder  
 By Arthur Bray Deputy