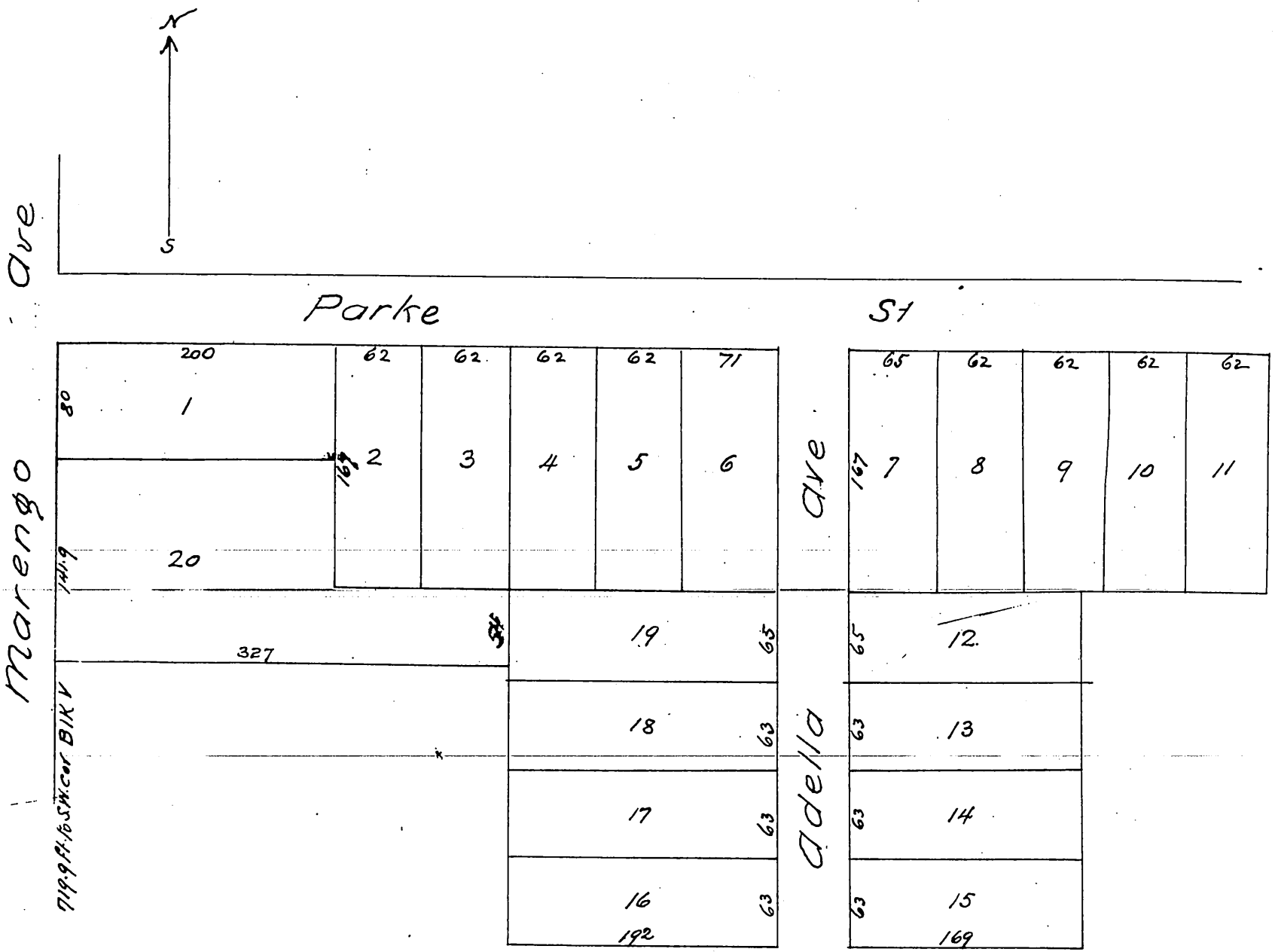


Lewis Landreth's Subdivision  
of part of Block V  
Painter & Ball's addition to  
Pasadena

Scale 1 in = 100 ft



A full true and correct copy of the  
original recorded September 13<sup>th</sup> 1886  
at 9<sup>th</sup> am at request of Lewis Landreth  
Frank A. Gibson County Recorder  
By Arthur Pray Deputy