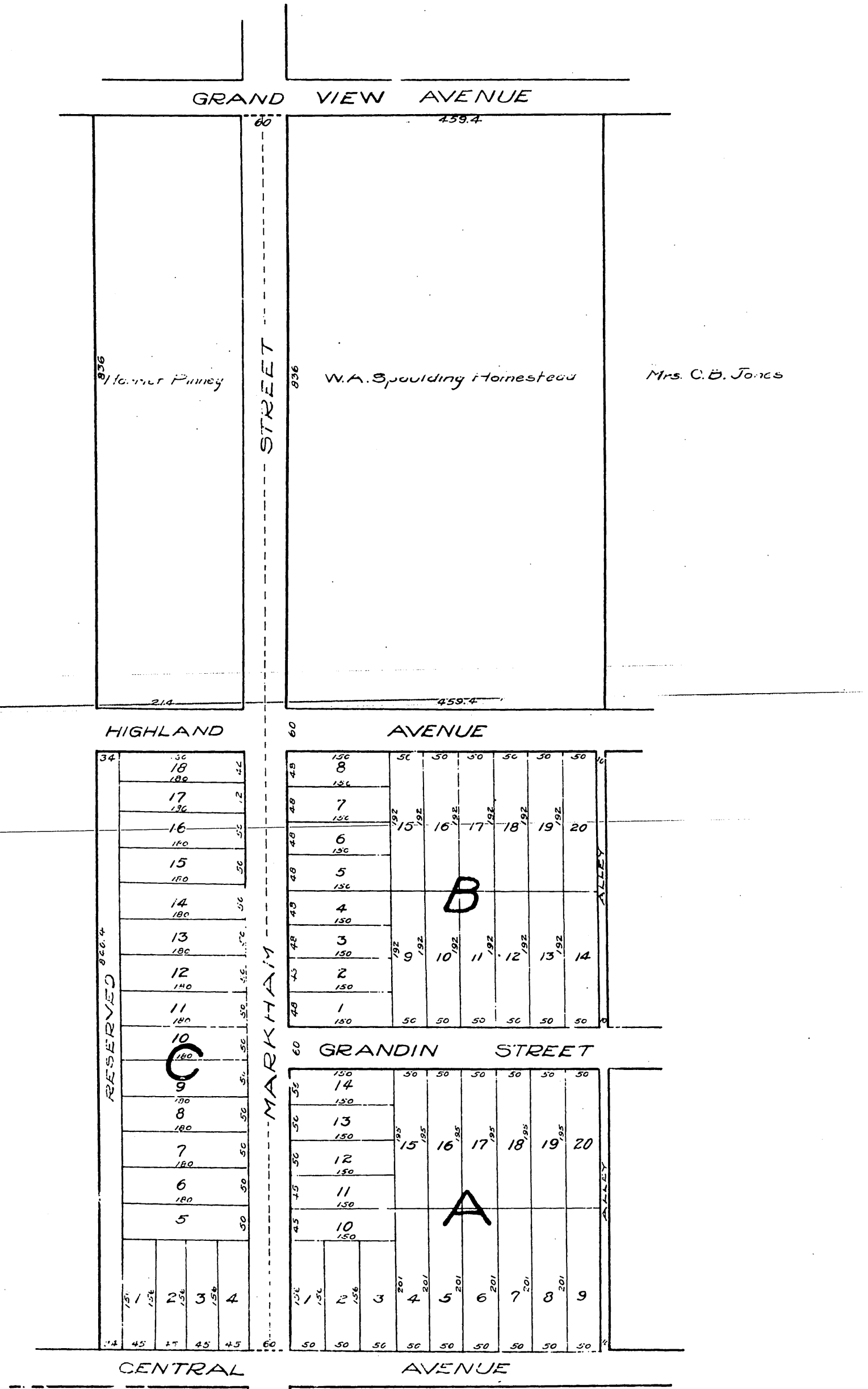


Plat of
Spaulding and Pinney's
 Subdivision of East three-quarters of
 Lot 16, Sierra Madre Tract.
 Los Angeles Co. Cal.

Scale - 100 ft. to the inch.



A full, true and correct copy of the original,
 reduced to the scale of 150 feet to the inch,
 recorded Sept. 13th 1886, at 4:40 P.M. at
 the request of W.A. Spaulding.

Frank A. Gibson, County Recorder
 By Arthur Booy, Deputy. **5**