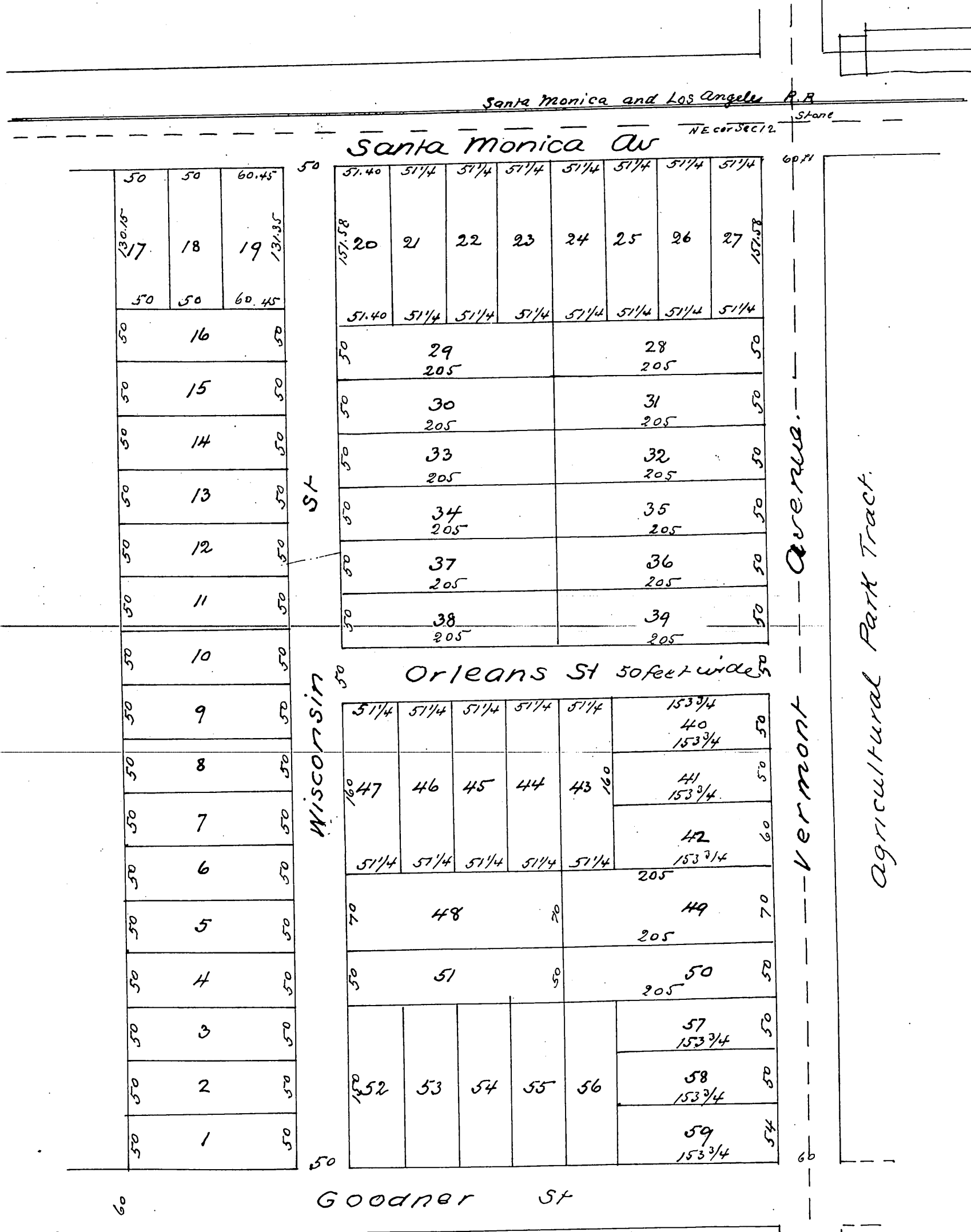


Map of the Miltimore Tract

situated in the NE corner of Sec
12 T 2 S R 14 W S. B M
Subdivided and for sale by
D. O. Miltimore
Scale 50 feet = 1 inch Va. 14 1/2 E
John Goldsworthy Surveyor
Sept 11th & 12th 1886

University of
Southern California Tr.



a full, true and correct copy of the original
(reduced to the scale of 100 feet to one inch)
recorded Sept 18th 1886 at 12³¹ m at request
of D O Miltimore

Frank A. Gibson
By Arthur Bray

County Recorder
Deputy