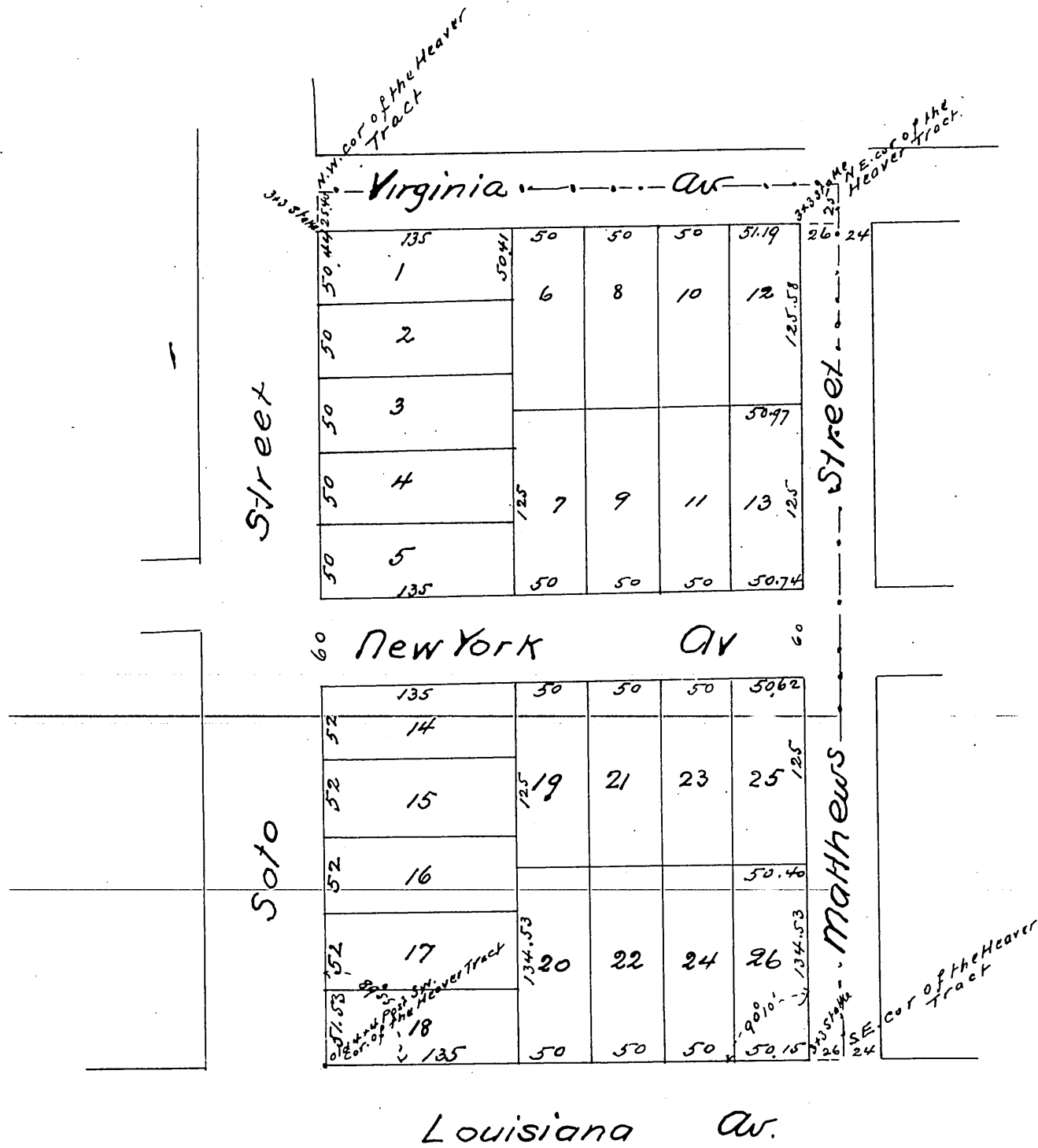


Map of the Heaver Tract City of Los Angeles

Subdivided at the request of Ruddy, Burns & Smith
in September 1886 by Geo C. Knox

Scale 100 feet to one inch



Note - The westerly 26 feet of Matthews St
is included within the Heaver Tract
The S.W. corner of Lot 5 Block 73 H.S. is
the S.W. corner of the Heaver Tract
Hedge

a full true and correct copy of the original
recorded Sept 20th 1886 at 10th A.M. at request
of Ruddy Burns & Smith
Frank A. Gibson County Recorder
By Arthur Tracy Deputy