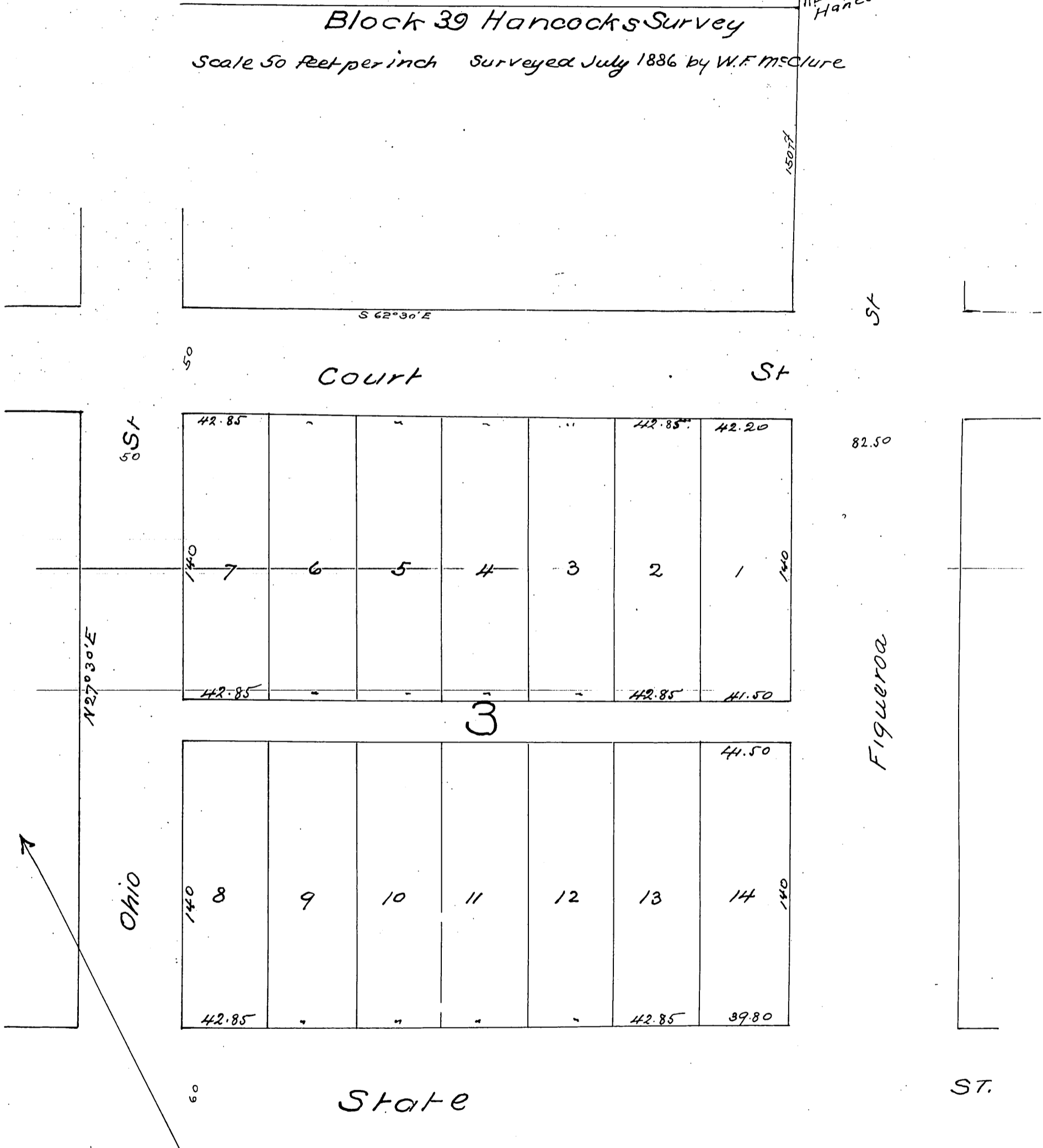


Map  
OF THE  
Los Angeles Improvement Co's  
Subdivision of part of Lot 8  
Block 39 Hancock's Survey  
Scale 50 feet per inch Surveyed July 1886 by W.F. McClure

NE. cor of lot 8 B1K39  
Hancock's Survey.



a full true and correct copy of the original  
recorded Sept 22<sup>d</sup> 1886 at 9<sup>h</sup> A.M. at request  
of H. C. Witmer

Frank A. Gibson County Recorder  
By Arthur Bray Deputy -