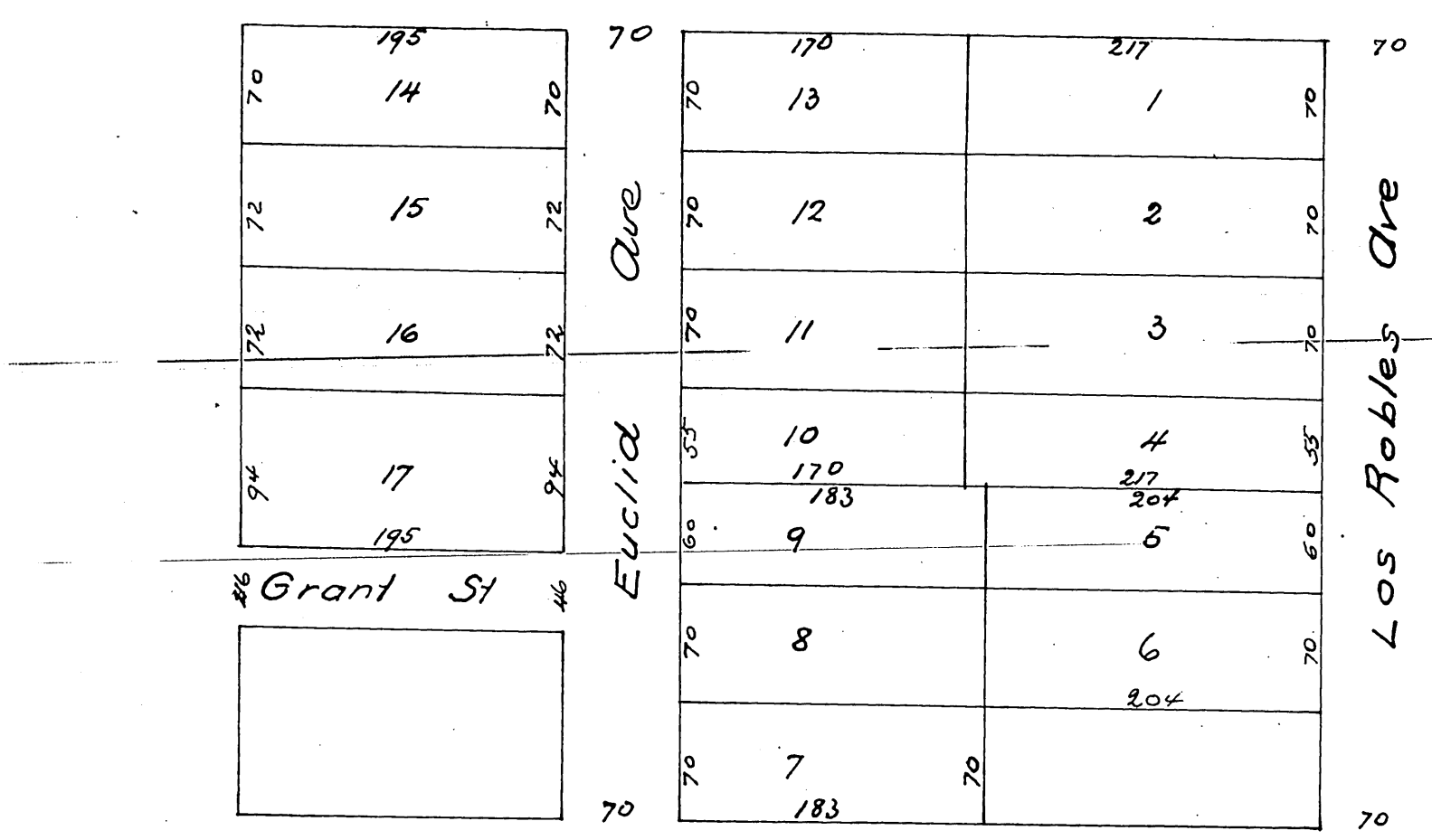


Map of the Allen Tract

Being a Replat of Lyman Allen's Subdivision
of the North part of Lot 6 Block I
San Pasqual Tract Pasadena Cal.
Surveyed Sept 1886 by J. M. Willard C.E.
Scale 60 ft = 1 inch



A full, true and correct copy of the original
(reduced to the scale of 100 feet to one inch)
recorded Sept 24th 1886 at 1 P.M. at request of
Lyman Allen

Frank A. Gibson County Recorder
By Arthur Bray deputy