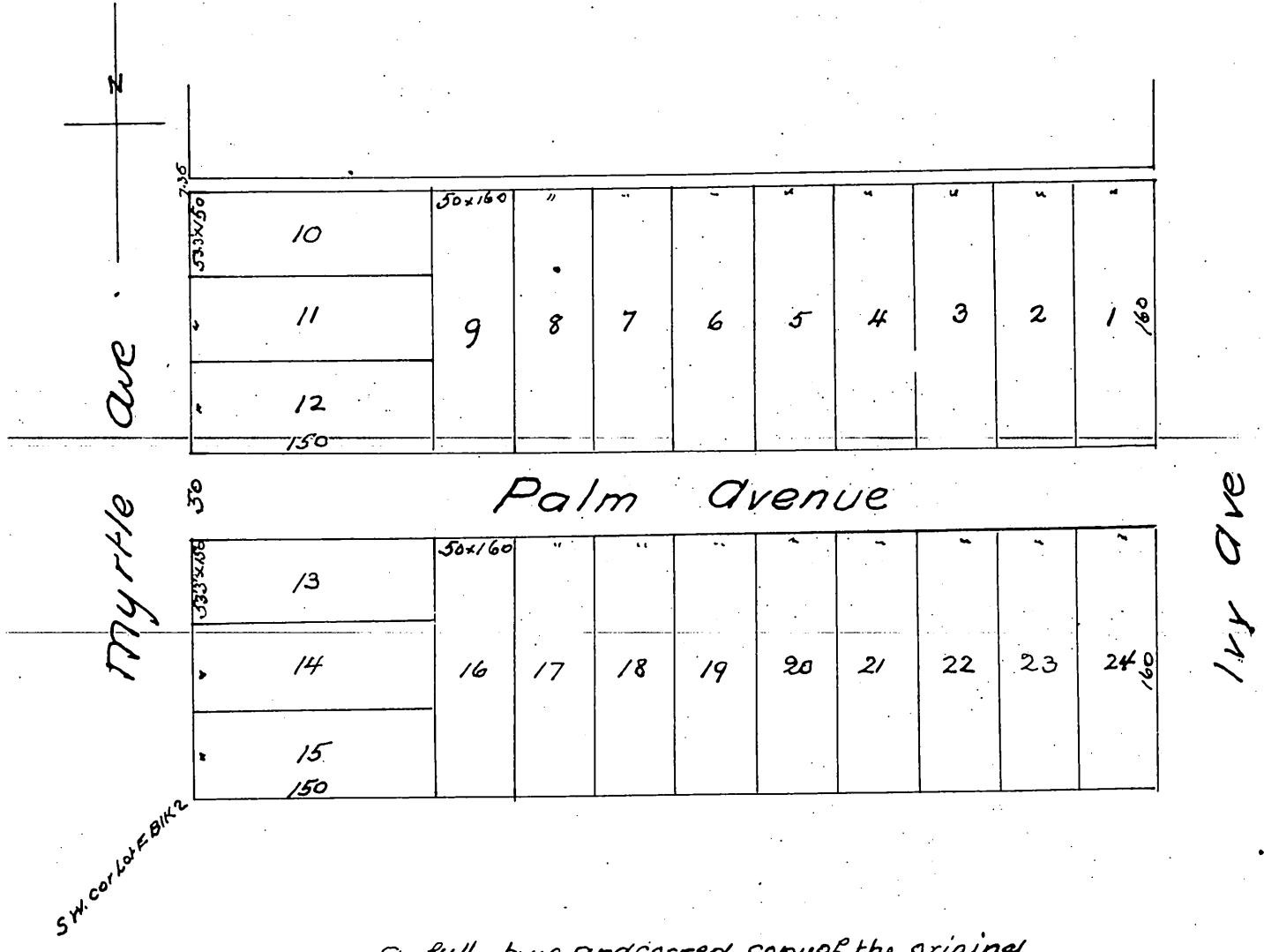


Map
of
Whittemore's Sub-division
of Lot E and parts of Lots C and D Block 2
Monrovia Cal
J. W. Bessonett Surveyor 1886
Scale 1 inch to 50 ft.



A full, true and correct copy of the original
(reduced to the scale of 100 feet to one inch)
recorded Sept 25th 1886 at 9³⁰ am at request
of W. H. Whittemore
Frank A. Gibson County Recorder
By Arthur Bray Deputy