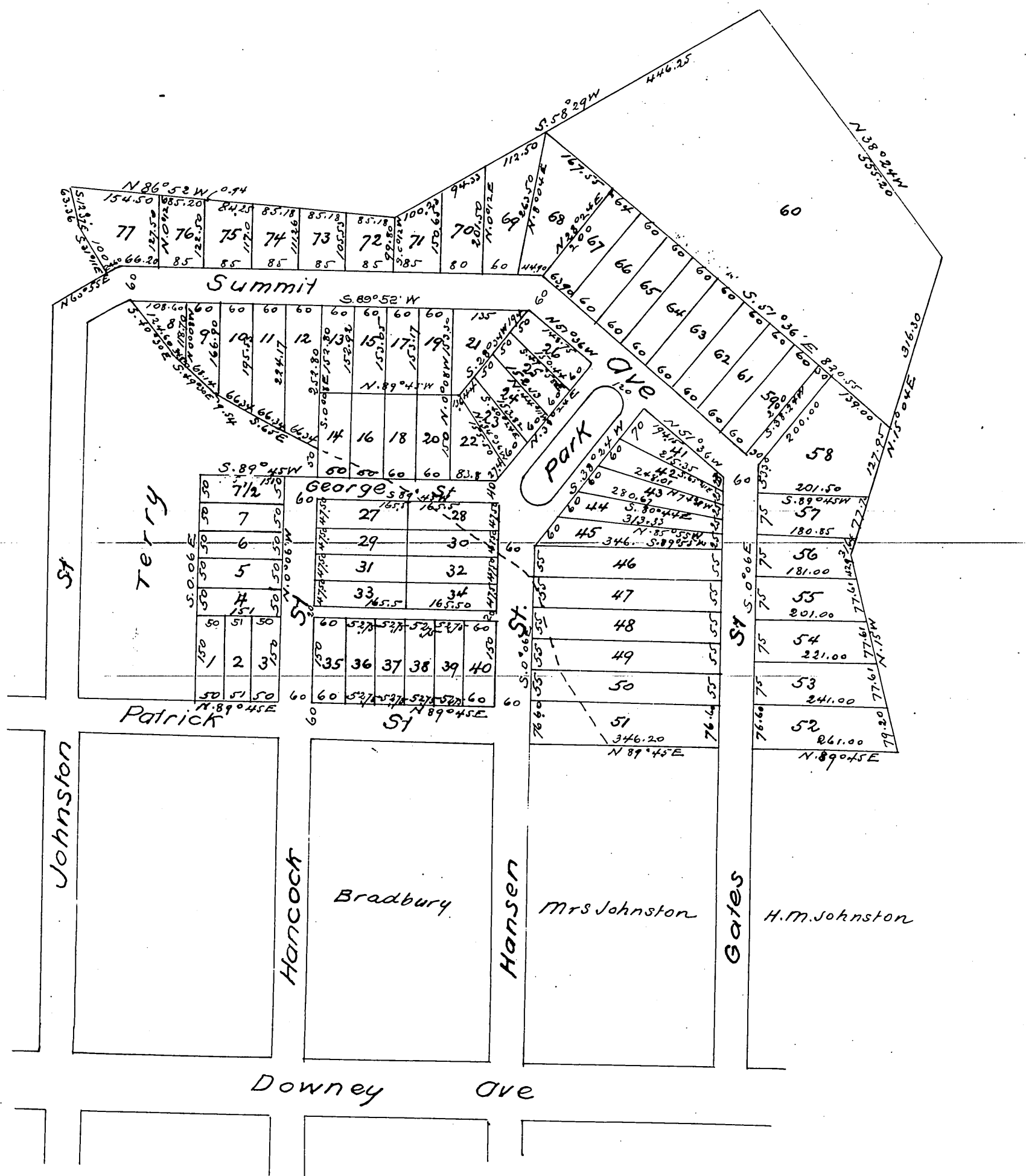


Map OF Wm. Lacy's Addition TO East Los Angeles

Surveyed in January 1886 by E.T. Wright
Scale 100 feet to one in



A full, true and correct copy of the original (reduced to the scale of 200 feet to one inch) recorded Sept 25th 1886 at 12³⁰ M at request of W. Lacy

Frank A. Gibson County Recorder
By Arthur Bray Deputy