

1130

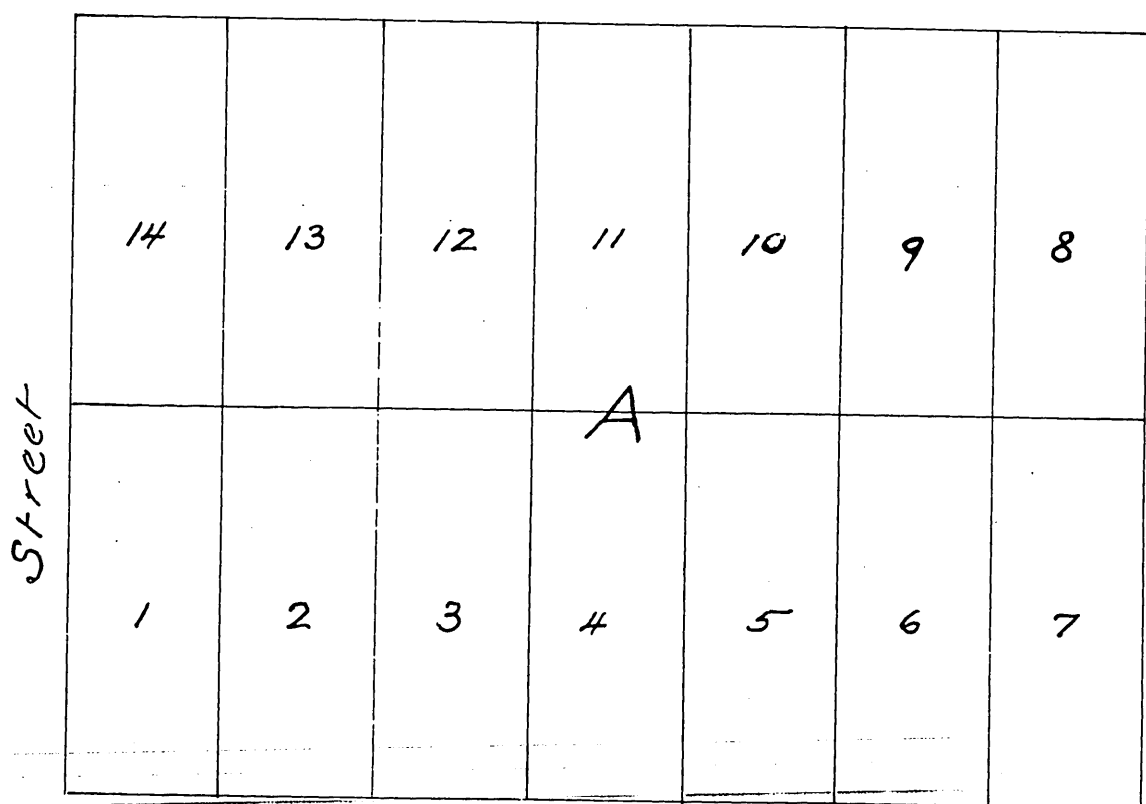
Dr. J. M. Lacy's Addition to Santa Ana, California

Surveyed Sep 28th 1886 by Harry F. Stafford
Surveyor

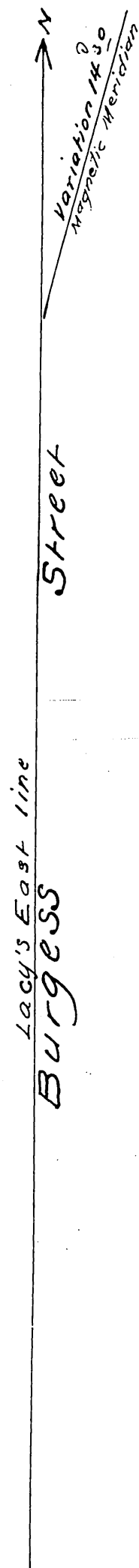
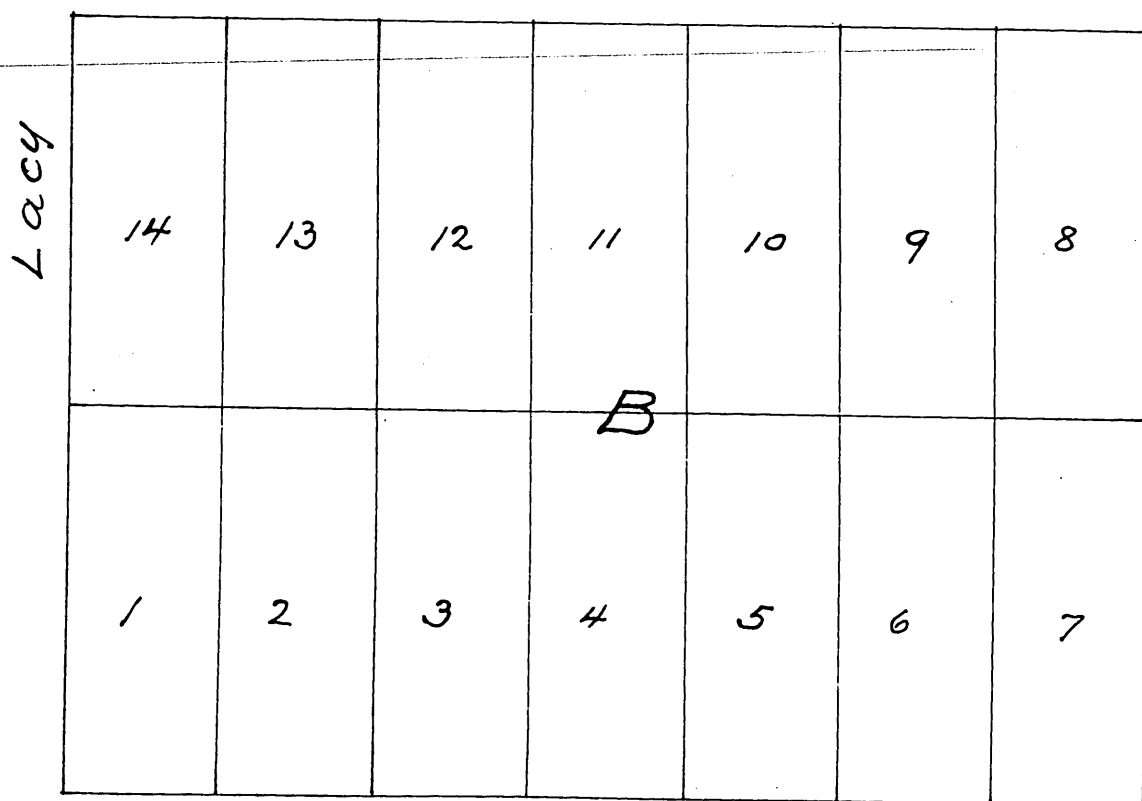
Notes

Lots 50 ft x 125 ft.
5th Street 60 ft wide
S E corner of Block B is 20.15
ft west of a point 40 ft North
of S. E corner of Lacy Tract

6th Street



5th Street 60 ft



a full true and correct copy of original
(reduced to the scale of 60 ft to one inch)
recorded Oct 1st 1886 at 2³³ P.M. at request of
W. S. Bartlett
Frank A. Gibson County Recorder
By Arthur Bray Deputy.