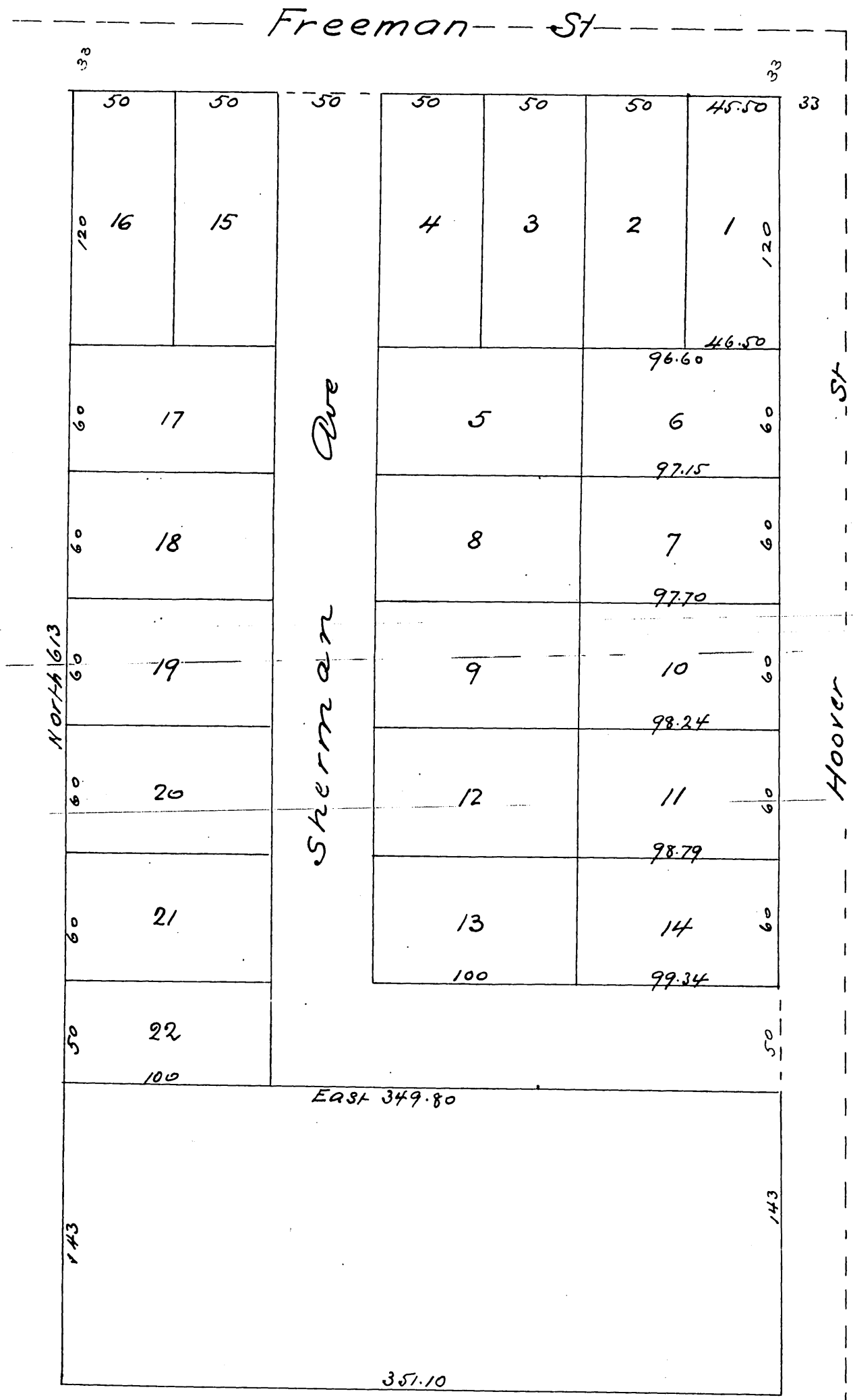


# Map OF The Hardin Tract

Being subdivision of Lot 6 Freeman  
Tract Being a portion of N 1/2 SW 1/4  
Sec 31 T 1 S. R 13 W S. B. M.  
Surveyed at request of W T Hardin June 1886  
by W. H. Tinker C. E.  
Scale 30ft 1 in



a full, true and correct copy of the original  
(reduced to the scale of 60 feet to one inch)  
recorded Oct 4<sup>th</sup> 1886 at 9:40 AM at request of  
Chas Victor Hall  
@ Frank A. Gibson County Recorder  
By Arthur Bray deputy.