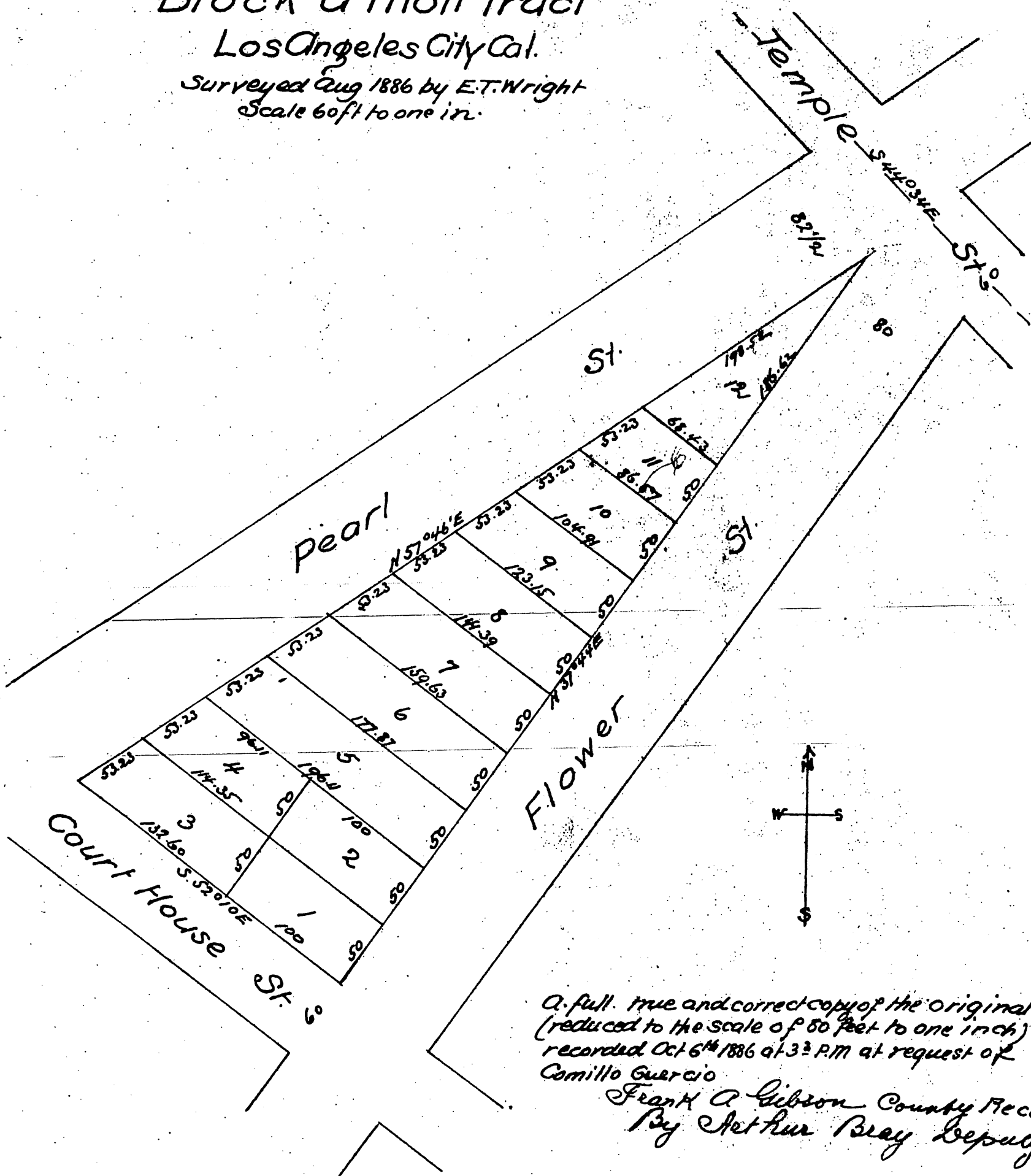


Map
 OF
 V. Beaudry's Subdivision
 OF
 Block U Mott Tract
 Los Angeles City Cal.
 Surveyed Aug 1886 by E.T. Wright
 Scale 60ft to one in.



A full, true and correct copy of the original
 (reduced to the scale of 60 feet to one inch)
 recorded Oct 6th 1886 at 3³⁰ P.M at request of
 Camillo Guercio
 Frank A Gibson County Recorder
 By Arthur Bray Deputy