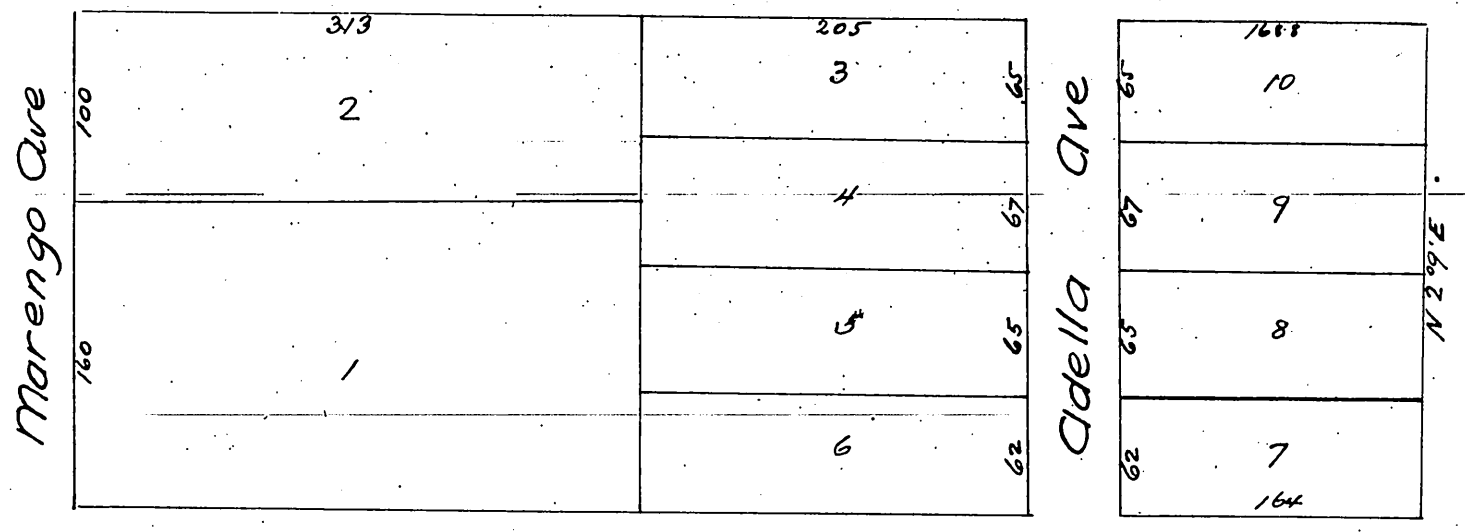


*E. B. Allen's Subdivision*  
 of Lot No 8 of B.O. Clark's and Mary E. Clark's  
 Subdivision as recorded in Book 6  
 Page 207 Miscellaneous Records of  
 Los Angeles. Co  
 Scale 1 in = 100 ft.



a full, true and correct copy of the original  
 recorded Oct 11<sup>th</sup> 1886 at 10<sup>o</sup> a.m. at request of  
 E. Ballou  
 Frank A. Gibson County Recorder  
 by Arthur Bray Deputy.