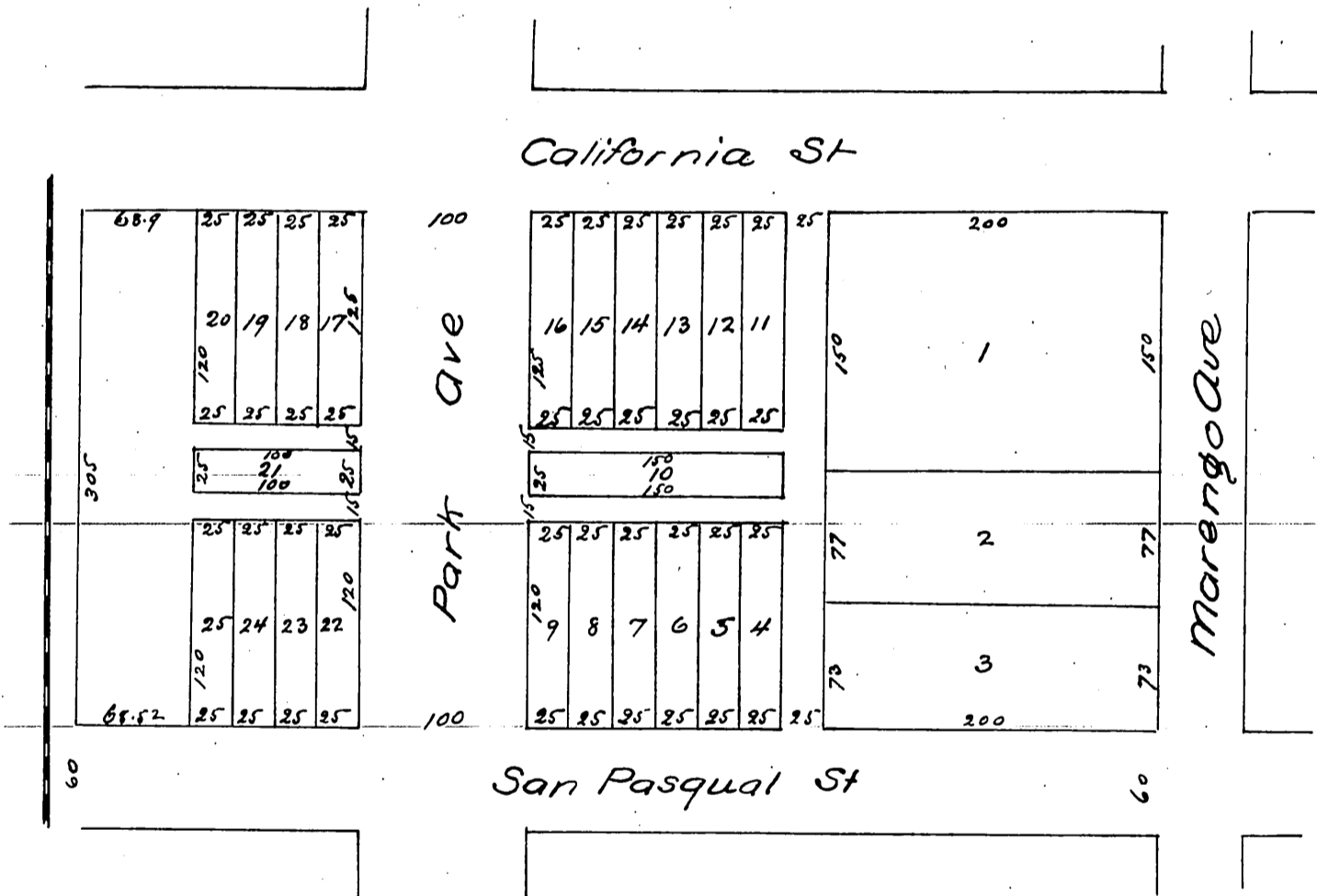


Map
 OF
 Webster and Stratton's
 Subdivision of the
 Hayhurst Property
 of the
 N¹/₂ of Lot 2 Block N San Pasqual Tract
 of the Lands of the
 Lake Vineyard Land and Water Association
 Pasadena Cal
 Surveyed Aug 1886 by J.M. Willard C.E.
 Scale 40 ft = 1 inch



A full, true and correct copy of the original
 (reduced to the scale of 100 feet to one inch)
 recorded Oct 12th 1886 at 12:17 m. at request of
 Samuel Stratton
 Frank A. Gibson County Recorder
 By Arthur Bray Deputy