

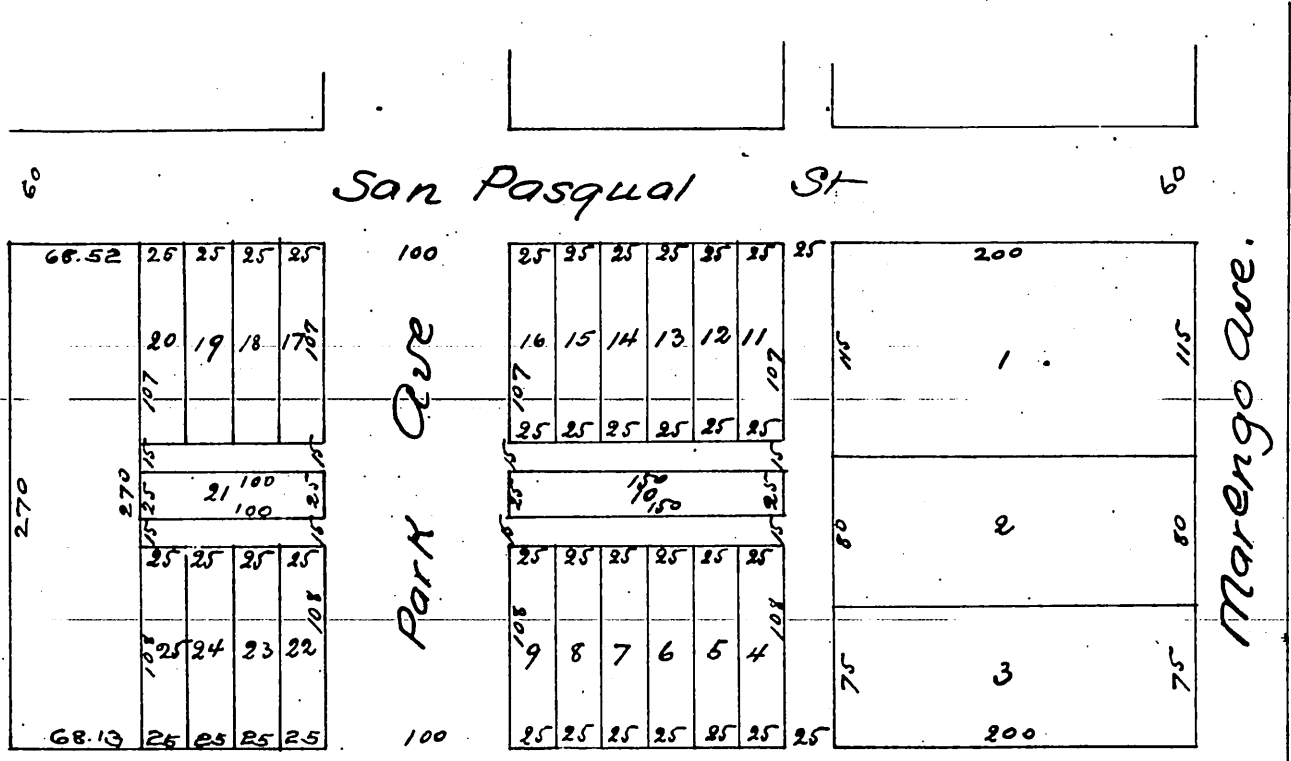
1155

Map OF Webster Picher and Martin's

Subdivision of the South half of Lot 2, Block 'n'
San Pasqual Tract of the lands of the
Lake Vineyard Land and Water Association

Pasadena Cal

Surveyed Aug 1886 by J. H. Willard C.E.
Scale 40 ft = 1 inch



A full, true and correct copy of the original
(reduced to the scale of 100 feet to one inch)
recorded Oct 14th 1886 at 1:32 P.M. at request of
F. C. Webster
Frank A. Gibson County Recorder
By Arthur Bray Deputy