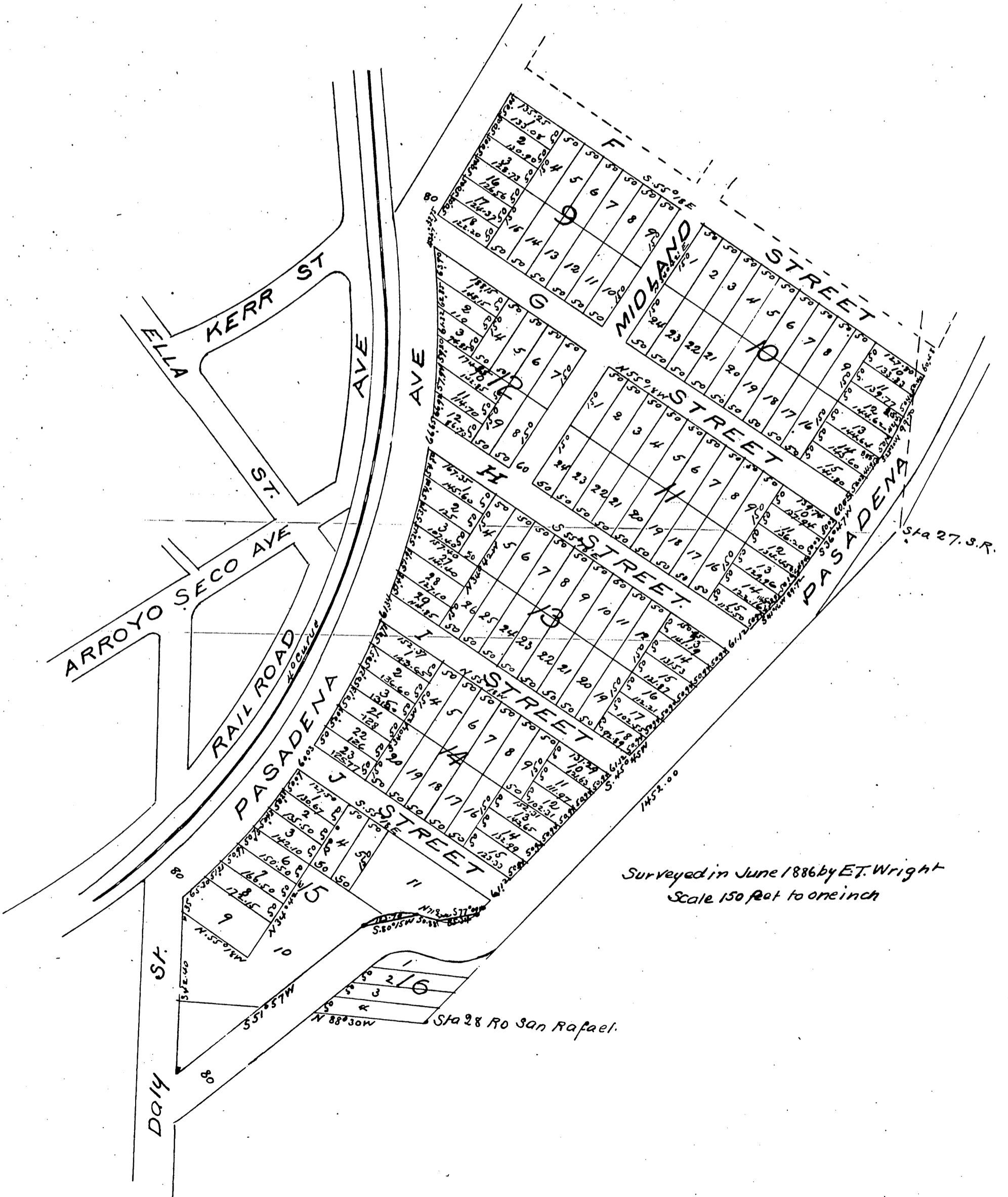


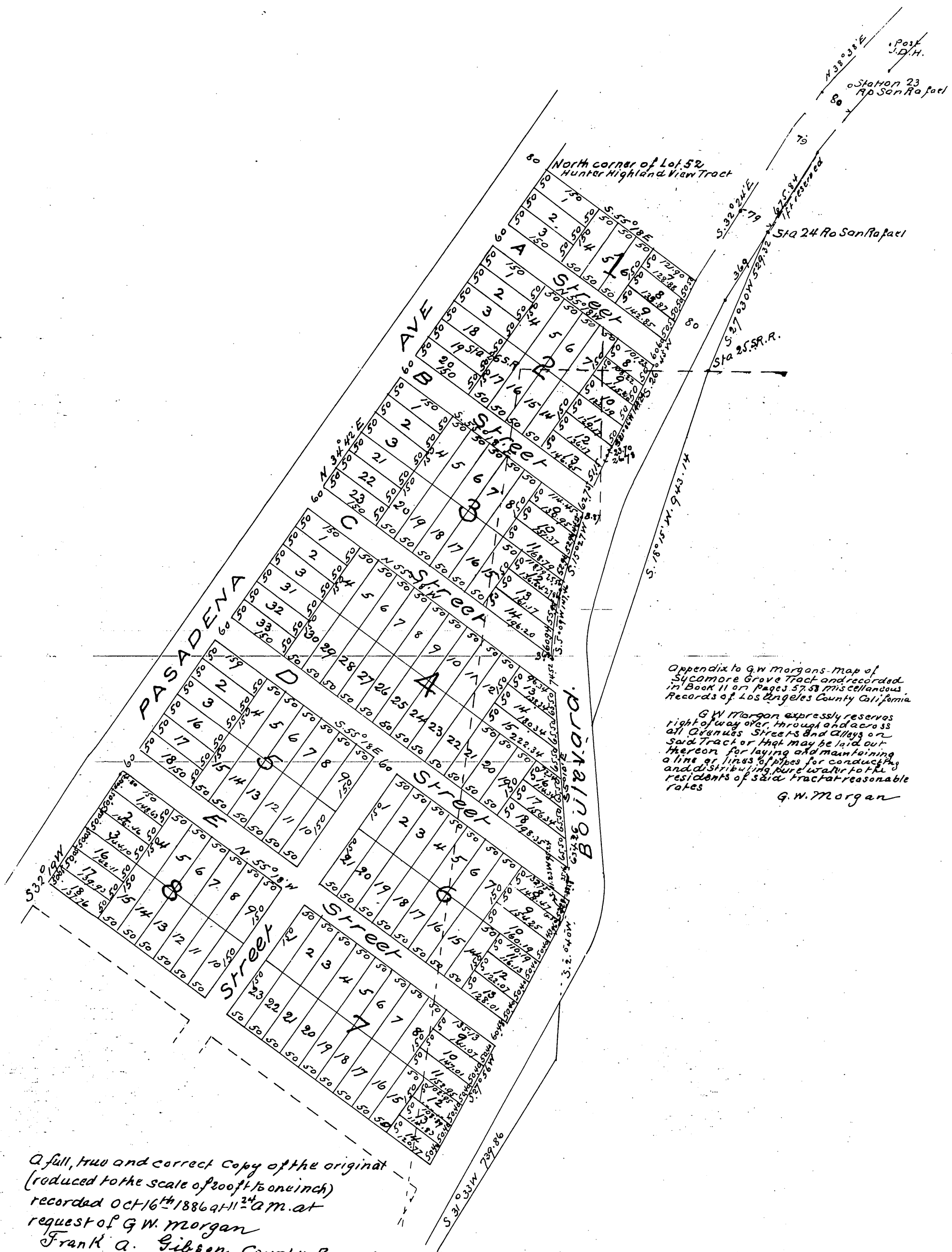
1187

51.

Map of
 G.W. Morgans Sycamore
 Grove Tract Los
 Angeles County
 California
 being a subdivision of part of the
 Hunter Highland View Tract.



Surveyed in June 1886 by E.T. Wright
 Scale 150 feet to one inch



Appendix to G.W. Morgan's Map of Sycamore Grove Tract and recorded in Book 11 on Pages 57, 58 Miscellaneous Records of Los Angeles County California

G.W. Morgan expressly reserves right of way over, through and across all Avenues, Streets and Alleys on said Tract or that may be laid out thereon for laying and maintaining a line or lines of pipes for conducting and distributing pure water to the residents of said tract at reasonable rates

G.W. Morgan

A full, true and correct copy of the original (reduced to the scale of 200 ft to one inch) recorded Oct 16th 1886 at 11²⁴ a.m. at request of G.W. Morgan
 Frank A. Gibson County Recorder
 By Arthur Bray Deputy